

Product datasheet for **TA322296**

TEM8 (ANTXR1) Rabbit Polyclonal Antibody

Product data:

Product Type:	Primary Antibodies
Applications:	IHC, WB
Recommended Dilution:	WB: 200-1000 WB positive control: Lovo cells and human liver cancer tissue IHC: 25-100 Positive control: Human liver cancer Predicted cell location: Cytoplasm
Reactivity:	Human, Mouse, Rat
Host:	Rabbit
Isotype:	IgG
Clonality:	Polyclonal
Immunogen:	Full length fusion protein
Formulation:	PBS pH7.3, 0.05% NaN ₃ , 50% glycerol
Concentration:	lot specific
Purification:	Antigen affinity purification
Conjugation:	Unconjugated
Storage:	Store at -20°C as received.
Stability:	Stable for 12 months from date of receipt.
Predicted Protein Size:	63 kDa
Gene Name:	anthrax toxin receptor 1
Database Link:	NP_060623 Entrez Gene 69538 Mouse Entrez Gene 362393 Rat Entrez Gene 84168 Human Q9H6X2



[View online »](#)

Background:

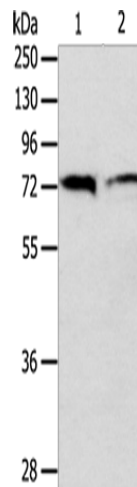
This gene encodes a type I transmembrane protein and is a tumor-specific endothelial marker that has been implicated in colorectal cancer. The encoded protein has been shown to also be a docking protein or receptor for Bacillus anthracis toxin, the causative agent of the disease, anthrax. The binding of the protective antigen (PA) component, of the tripartite anthrax toxin, to this receptor protein mediates delivery of toxin components to the cytosol of cells. Once inside the cell, the other two components of anthrax toxin, edema factor (EF) and lethal factor (LF) disrupt normal cellular processes. Three alternatively spliced variants that encode different protein isoforms have been described.

Synonyms:

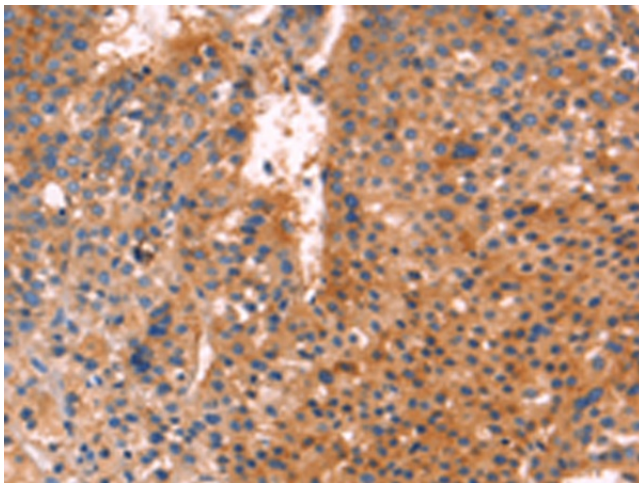
ATR; GAPO; TEM8

Protein Families:

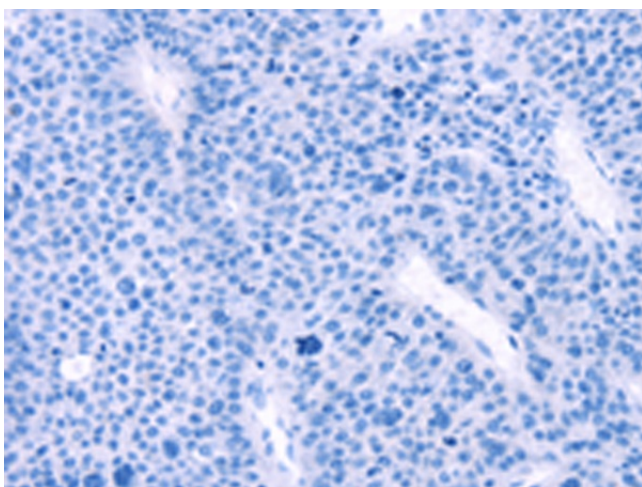
Druggable Genome, Transmembrane

Product images:

Gel: 10%SDS-PAGE
Lysate: 40 µg
Lane 1-2: Lovo cells
human liver cancer tissue
Primary antibody: TA322296 (ANTXR1 Antibody)
at dilution 1/300
Secondary antibody: Goat anti rabbit IgG at
1/8000 dilution
Exposure time: 30 seconds



Immunohistochemistry of paraffin-embedded
Human liver cancer tissue using TA322296
(ANTXR1 Antibody) at dilution 1/25 (Original
magnification: ×200)



Immunohistochemistry of paraffin-embedded Human liver cancer tissue using TA322296 (ANTXR1 Antibody) at dilution 1/25, treated with fusion protein. (Original magnification: ×200)