

## Product datasheet for **TA322295**

### TEM8 (ANTXR1) Rabbit Polyclonal Antibody

#### Product data:

Product Type:	Primary Antibodies
Applications:	WB
Recommended Dilution:	WB: 200-1000 WB positive control: Lovo cells
Reactivity:	Human, Mouse, Rat
Host:	Rabbit
Isotype:	IgG
Clonality:	Polyclonal
Immunogen:	Fusion protein corresponding to a region derived from 1-332 amino acids of human anthrax toxin receptor 1
Formulation:	PBS pH7.3, 0.05% NaN <sub>3</sub> , 50% glycerol
Concentration:	lot specific
Purification:	Antigen affinity purification
Conjugation:	Unconjugated
Storage:	Store at -20°C as received.
Stability:	Stable for 12 months from date of receipt.
Predicted Protein Size:	63 kDa
Gene Name:	anthrax toxin receptor 1
Database Link:	<a href="#">NP_060623</a> <a href="#">Entrez Gene 69538 Mouse</a> <a href="#">Entrez Gene 362393 Rat</a> <a href="#">Entrez Gene 84168 Human</a> <a href="#">Q9H6X2</a>



[View online »](#)

**Background:**

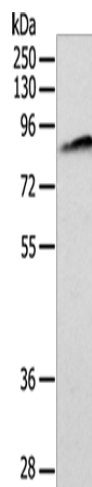
This gene encodes a type I transmembrane protein and is a tumor-specific endothelial marker that has been implicated in colorectal cancer. The encoded protein has been shown to also be a docking protein or receptor for Bacillus anthracis toxin, the causative agent of the disease, anthrax. The binding of the protective antigen (PA) component, of the tripartite anthrax toxin, to this receptor protein mediates delivery of toxin components to the cytosol of cells. Once inside the cell, the other two components of anthrax toxin, edema factor (EF) and lethal factor (LF) disrupt normal cellular processes. Three alternatively spliced variants that encode different protein isoforms have been described.

**Synonyms:**

ATR; GAPO; TEM8

**Protein Families:**

Druggable Genome, Transmembrane

**Product images:**

Gel: 10%SDS-PAGE  
Lysate: 40 µg  
Lane: Lovo cells  
Primary antibody: TA322295 (ANTXR1 Antibody)  
at dilution 1/200  
Secondary antibody: Goat anti rabbit IgG at  
1/8000 dilution  
Exposure time: 2 minutes