

## Product datasheet for **TA322293S**

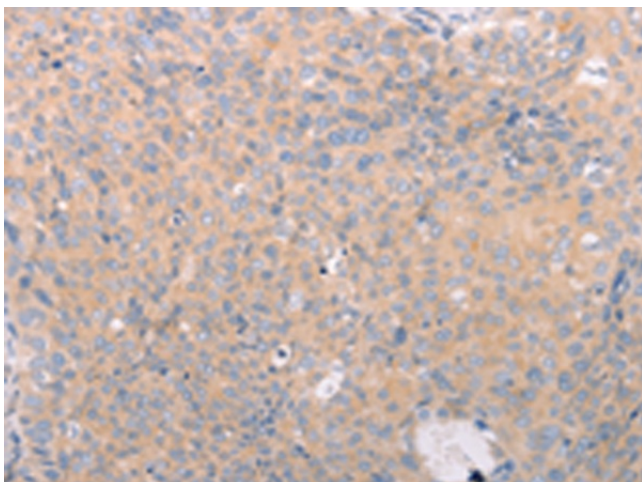
### ABCF3 Rabbit Polyclonal Antibody

#### Product data:

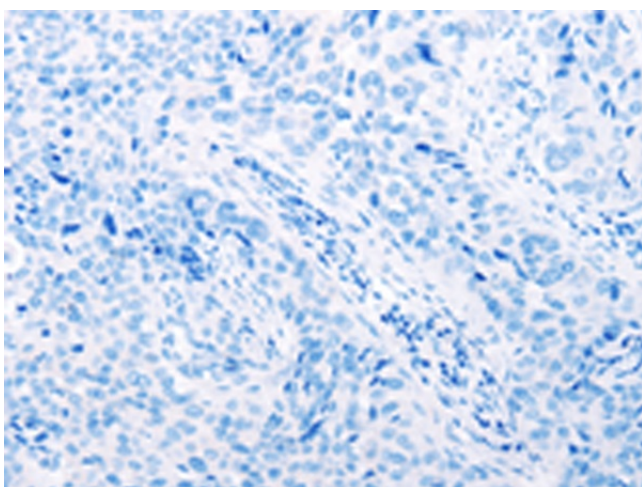
Product Type:	Primary Antibodies
Applications:	IHC
Recommended Dilution:	IHC: 25-100 Positive control: Human cervical cancer Predicted cell location: Cytoplasm
Reactivity:	Human, Mouse, Rat
Host:	Rabbit
Isotype:	IgG
Clonality:	Polyclonal
Immunogen:	Fusion protein corresponding to a region derived from 518-707 amino acids of human ATP-binding cassette, sub-family F (GCN20), member 3
Formulation:	PBS pH7.3, 0.05% NaN <sub>3</sub> , 50% glycerol
Purification:	Antigen affinity purification
Conjugation:	Unconjugated
Storage:	Store at -20°C as received.
Stability:	Stable for 12 months from date of receipt.
Gene Name:	ATP binding cassette subfamily F member 3
Database Link:	<a href="#">NP_060828</a> <a href="#">Entrez Gene 27406 Mouse</a> <a href="#">Entrez Gene 287982 Rat</a> <a href="#">Entrez Gene 55324 Human</a> <a href="#">Q9NUQ8</a>
Background:	This protein may display an antiviral effect against flaviviruses such as west Nile virus (WNV) in the presence of OAS1B. ATP-binding cassette (ABC) transporters regulate the transport of a variety of physiologic substrates. But this protein lacks transmembrane domains and is probably not involved in transport.
Synonyms:	EST201864
Protein Families:	Druggable Genome



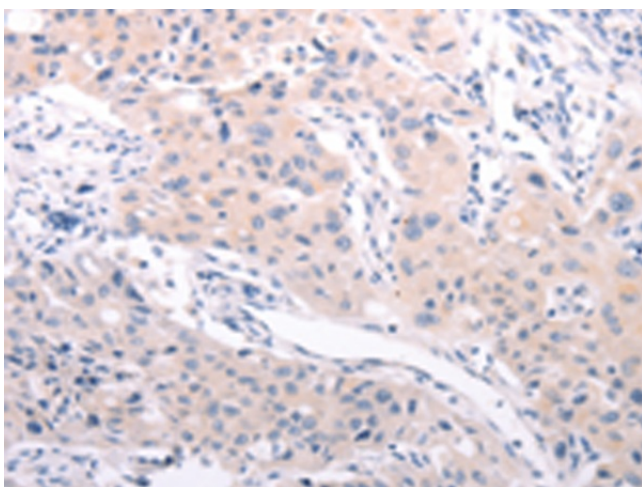
[View online »](#)

**Product images:**

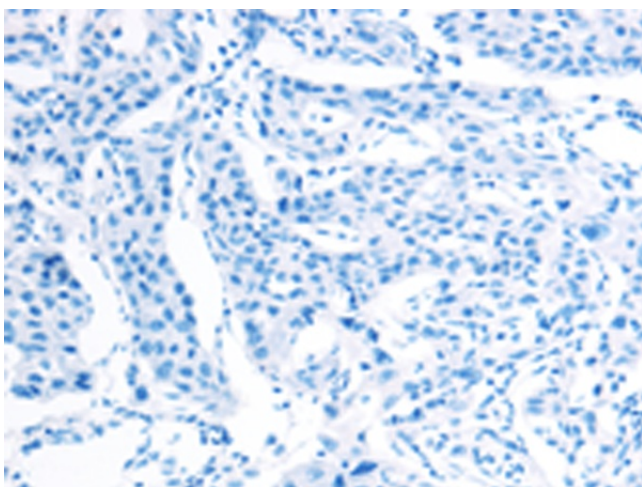
Immunohistochemistry of paraffin-embedded Human cervical cancer tissue using [TA322293] (ABCF3 Antibody) at dilution 1/30 (Original magnification: ×200)



Immunohistochemistry of paraffin-embedded Human cervical cancer tissue using [TA322293] (ABCF3 Antibody) at dilution 1/30, treated with fusion protein. (Original magnification: ×200)



Immunohistochemistry of paraffin-embedded Human lung cancer tissue using [TA322293] (ABCF3 Antibody) at dilution 1/30 (Original magnification:  $\times 200$ )



Immunohistochemistry of paraffin-embedded Human lung cancer tissue using [TA322293] (ABCF3 Antibody) at dilution 1/30, treated with fusion protein. (Original magnification:  $\times 200$ )