

Product datasheet for **TA322291**

SELS (SELENOS) Rabbit Polyclonal Antibody

Product data:

Product Type:	Primary Antibodies
Applications:	IHC
Recommended Dilution:	IHC: 25-100 Positive control: Human brain Predicted cell location: Cytoplasm, Endoplasmic reticulum membrane
Reactivity:	Human, Mouse, Rat
Host:	Rabbit
Isotype:	IgG
Clonality:	Polyclonal
Immunogen:	Synthetic peptide corresponding to a region derived from 98-112 amino acids of human VCP-interacting membrane protein
Formulation:	PBS pH7.3, 0.05% NaN ₃ , 50% glycerol
Concentration:	lot specific
Purification:	Antigen affinity purification
Conjugation:	Unconjugated
Storage:	Store at -20°C as received.
Stability:	Stable for 12 months from date of receipt.
Gene Name:	VCP interacting membrane selenoprotein
Database Link:	NP_060915 Entrez Gene 109815 MouseEntrez Gene 286900 RatEntrez Gene 55829 Human Q9BQE4

Background: This gene encodes a selenoprotein; which contains a selenocysteine (Sec) residue at its active site. The selenocysteine is encoded by the UGA codon that normally signals translation termination. The 3' UTR of selenoprotein genes have a common stem-loop structure; the sec insertion sequence (SECIS); that is necessary for the recognition of UGA as a Sec codon rather than as a stop signal. Studies suggest that this protein may regulate cytokine production; and thus play a key role in the control of the inflammatory response. Two alternatively spliced transcript variants encoding the same protein have been found for this gene.

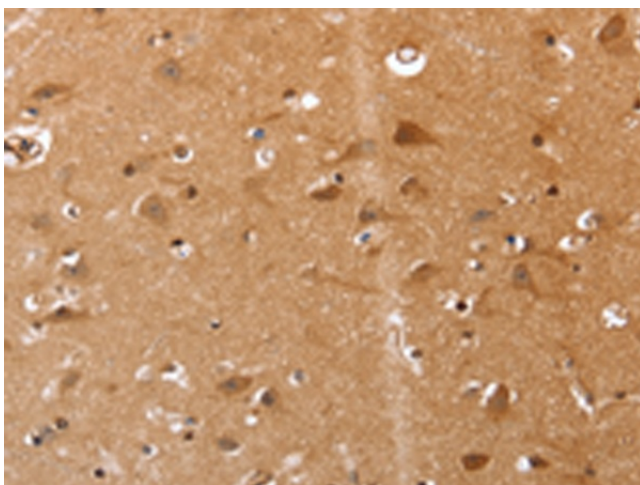


[View online »](#)

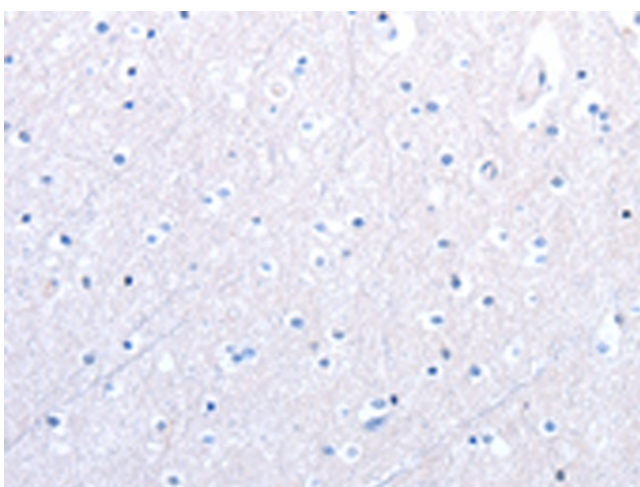
Synonyms: AD-015; ADO15; SBB18; SELS; SEPS1

Protein Families: Druggable Genome

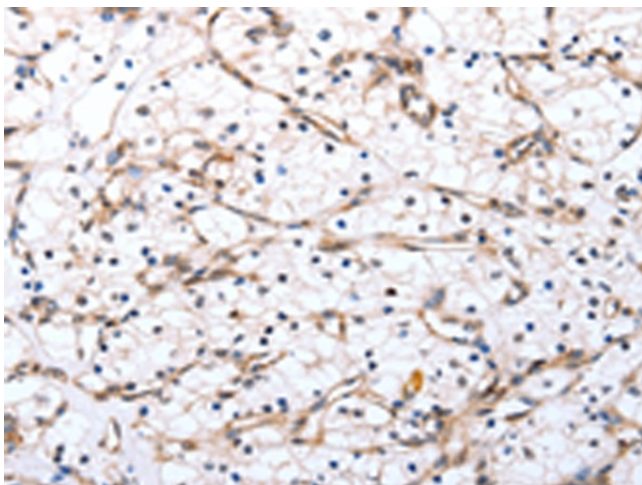
Product images:



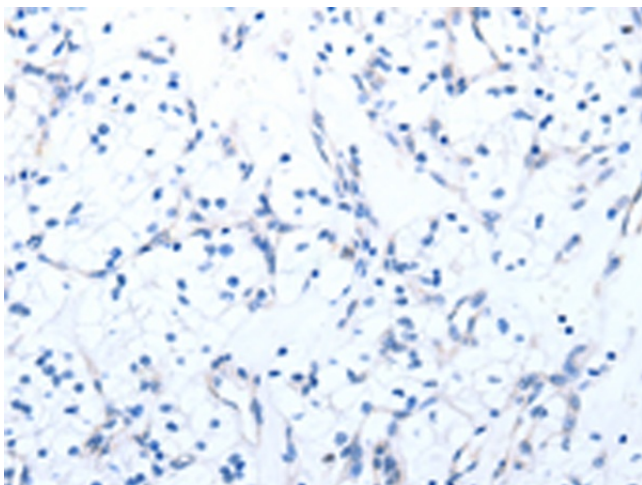
Immunohistochemistry of paraffin-embedded Human brain tissue using TA322291 (SELENOS Antibody) at dilution 1/20 (Original magnification: ×200)



Immunohistochemistry of paraffin-embedded Human brain tissue using TA322291 (SELENOS Antibody) at dilution 1/20, treated with synthetic peptide. (Original magnification: ×200)



Immunohistochemistry of paraffin-embedded Human renal cancer tissue using TA322291 (SELENOS Antibody) at dilution 1/20 (Original magnification: $\times 200$)



Immunohistochemistry of paraffin-embedded Human renal cancer tissue using TA322291 (SELENOS Antibody) at dilution 1/20, treated with synthetic peptide. (Original magnification: $\times 200$)