

Product datasheet for **TA322285S**

Ubiquitin (UBB) Rabbit Polyclonal Antibody

Product data:

Product Type:	Primary Antibodies
Applications:	IHC, WB
Recommended Dilution:	WB: 200-1000 WB positive control: Hela cells and mouse liver tissue IHC: 25-100 Positive control: Human thyroid cancer Predicted cell location: Nucleus and Cytoplasm
Reactivity:	Human, Mouse, Rat
Host:	Rabbit
Isotype:	IgG
Clonality:	Polyclonal
Immunogen:	Fusion protein corresponding to a region derived from 102-229 amino acids of Human Polyubiquitin-B
Formulation:	PBS pH7.3, 0.05% NaN ₃ , 50% glycerol
Purification:	Antigen affinity purification
Conjugation:	Unconjugated
Storage:	Store at -20°C as received.
Stability:	Stable for 12 months from date of receipt.
Gene Name:	ubiquitin B
Database Link:	NP_061828 Entrez Gene 22187 Mouse Entrez Gene 192255 Rat Entrez Gene 7314 Human POCG47



[View online »](#)

Background:

This gene encodes ubiquitin; one of the most conserved proteins known. Ubiquitin is required for ATP-dependent; nonlysosomal intracellular protein degradation of abnormal proteins and normal proteins with a rapid turnover. Ubiquitin is covalently bound to proteins to be degraded; and presumably labels these proteins for degradation. Ubiquitin also binds to histone H2A in actively transcribed regions but does not cause histone H2A degradation; suggesting that ubiquitin is also involved in regulation of gene expression. This gene consists of three direct repeats of the ubiquitin coding sequence with no spacer sequence. Consequently; the protein is expressed as a polyubiquitin precursor with a final amino acid after the last repeat. Aberrant form of this protein has been noticed in patients with Alzheimer's and Down syndrome.?

Synonyms:

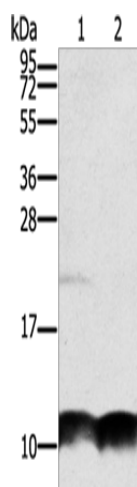
HEL-S-50

Protein Families:

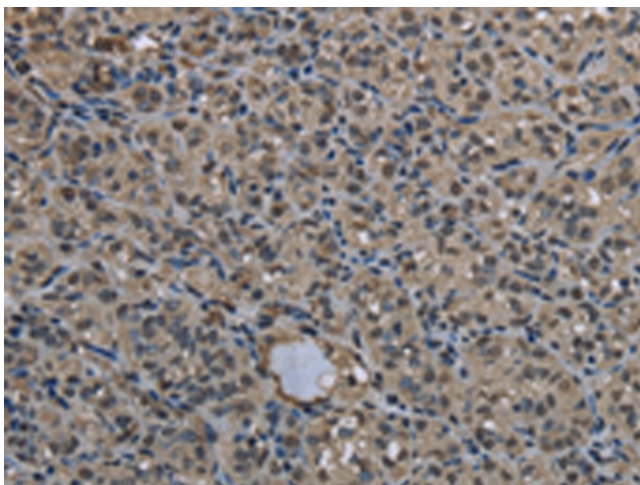
Druggable Genome

Protein Pathways:

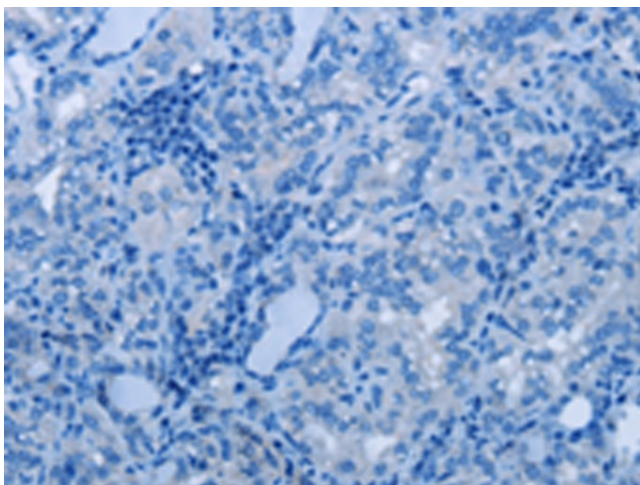
Parkinson's disease

Product images:

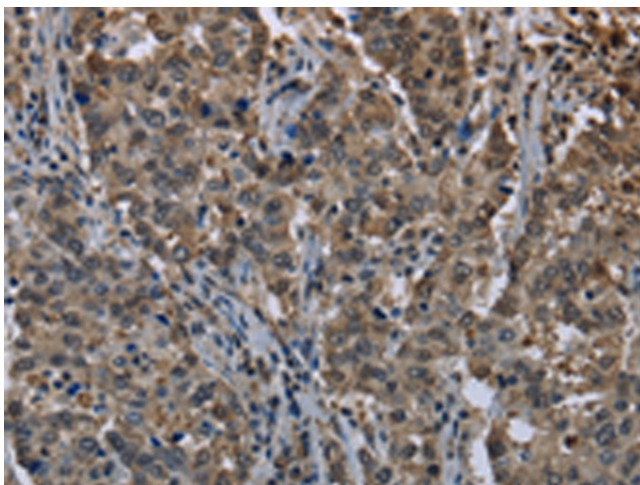
Gel: 8%SDS-PAGE
Lysate: 40 µg
Lane 1-2: HeLa cells
mouse liver tissue
Primary antibody: [TA322285] (UBB Antibody) at dilution 1/300
Secondary antibody: Goat anti rabbit IgG at 1/8000 dilution
Exposure time: 40 seconds



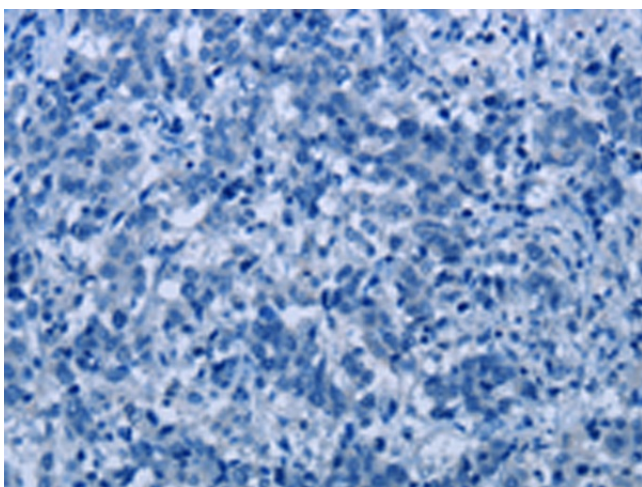
Immunohistochemistry of paraffin-embedded Human thyroid cancer tissue using [TA322285] (UBB Antibody) at dilution 1/20 (Original magnification: $\times 200$)



Immunohistochemistry of paraffin-embedded Human thyroid cancer tissue using [TA322285] (UBB Antibody) at dilution 1/20, treated with fusion protein. (Original magnification: $\times 200$)



Immunohistochemistry of paraffin-embedded Human liver cancer tissue using [TA322285] (UBB Antibody) at dilution 1/20 (Original magnification: $\times 200$)



Immunohistochemistry of paraffin-embedded Human liver cancer tissue using [TA322285] (UBB Antibody) at dilution 1/20, treated with fusion protein. (Original magnification: $\times 200$)