

## Product datasheet for **TA322285**

### Ubiquitin (UBB) Rabbit Polyclonal Antibody

#### Product data:

Product Type:	Primary Antibodies
Applications:	IHC, WB
Recommended Dilution:	WB: 200-1000 WB positive control: Hela cells and mouse liver tissue IHC: 25-100 Positive control: Human thyroid cancer Predicted cell location: Nucleus and Cytoplasm
Reactivity:	Human, Mouse, Rat
Host:	Rabbit
Isotype:	IgG
Clonality:	Polyclonal
Immunogen:	Fusion protein corresponding to a region derived from 102-229 amino acids of Human Polyubiquitin-B
Formulation:	PBS pH7.3, 0.05% NaN <sub>3</sub> , 50% glycerol
Concentration:	lot specific
Purification:	Antigen affinity purification
Conjugation:	Unconjugated
Storage:	Store at -20°C as received.
Stability:	Stable for 12 months from date of receipt.
Gene Name:	ubiquitin B
Database Link:	<a href="#">NP_061828</a> <a href="#">Entrez Gene 22187 MouseEntrez Gene 192255 RatEntrez Gene 7314 Human P0CG47</a>



[View online »](#)

**Background:**

This gene encodes ubiquitin; one of the most conserved proteins known. Ubiquitin is required for ATP-dependent; nonlysosomal intracellular protein degradation of abnormal proteins and normal proteins with a rapid turnover. Ubiquitin is covalently bound to proteins to be degraded; and presumably labels these proteins for degradation. Ubiquitin also binds to histone H2A in actively transcribed regions but does not cause histone H2A degradation; suggesting that ubiquitin is also involved in regulation of gene expression. This gene consists of three direct repeats of the ubiquitin coding sequence with no spacer sequence. Consequently; the protein is expressed as a polyubiquitin precursor with a final amino acid after the last repeat. Aberrant form of this protein has been noticed in patients with Alzheimer's and Down syndrome.?

**Synonyms:**

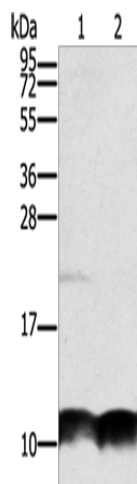
HEL-S-50

**Protein Families:**

Druggable Genome

**Protein Pathways:**

Parkinson's disease

**Product images:**

Gel: 8%SDS-PAGE

Lysate: 40 µg

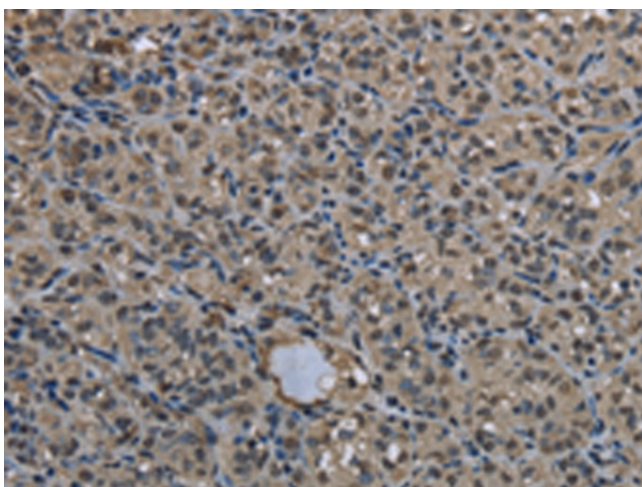
Lane 1-2: HeLa cells

mouse liver tissue

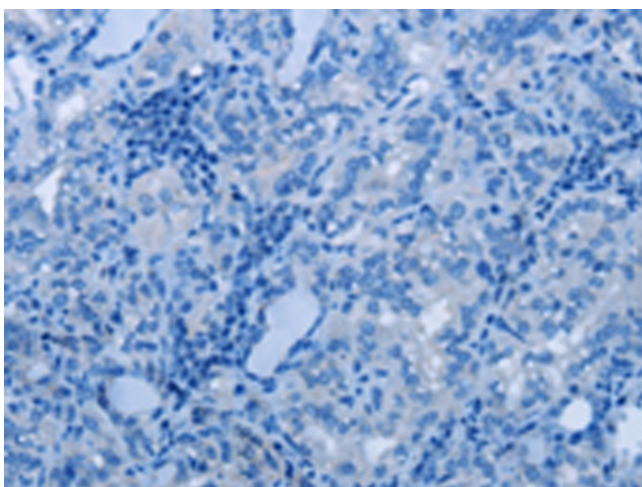
Primary antibody: TA322285 (UBB Antibody) at dilution 1/300

Secondary antibody: Goat anti rabbit IgG at 1/8000 dilution

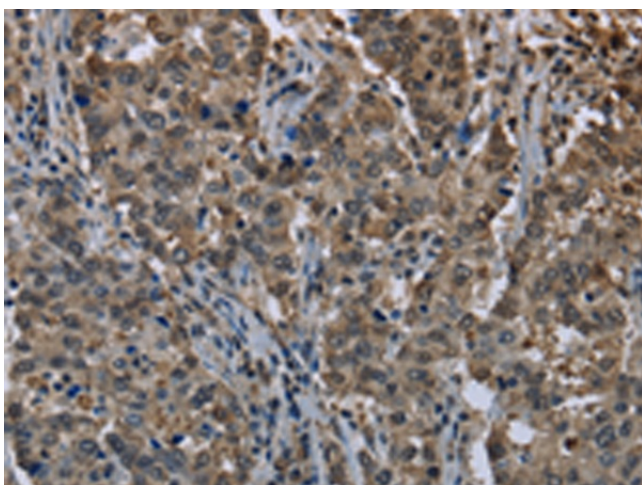
Exposure time: 40 seconds



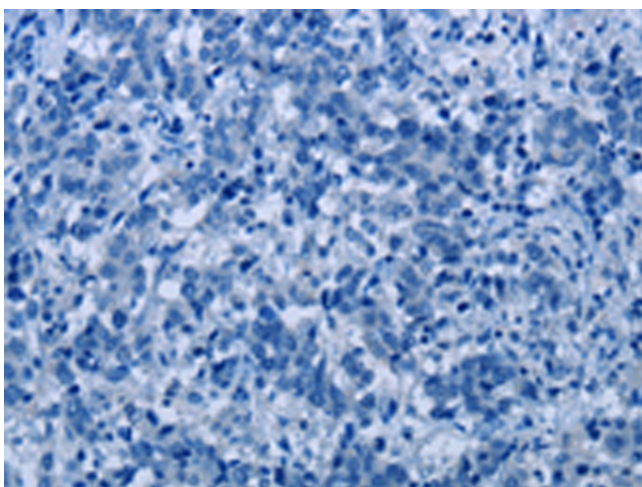
Immunohistochemistry of paraffin-embedded Human thyroid cancer tissue using TA322285 (UBB Antibody) at dilution 1/20 (Original magnification:  $\times 200$ )



Immunohistochemistry of paraffin-embedded Human thyroid cancer tissue using TA322285 (UBB Antibody) at dilution 1/20, treated with fusion protein. (Original magnification:  $\times 200$ )



Immunohistochemistry of paraffin-embedded Human liver cancer tissue using TA322285 (UBB Antibody) at dilution 1/20 (Original magnification:  $\times 200$ )



Immunohistochemistry of paraffin-embedded Human liver cancer tissue using TA322285 (UBB Antibody) at dilution 1/20, treated with fusion protein. (Original magnification:  $\times 200$ )