

## Product datasheet for **TA322284**

### SPATA6 Rabbit Polyclonal Antibody

#### Product data:

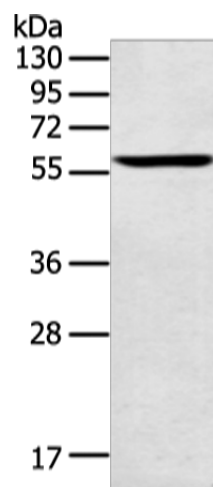
|                         |  |
|-------------------------|--|
| Product Type:           | Primary Antibodies   |
| Applications:           | IHC, WB  |
| Recommended Dilution:   | WB: 200-1000<br>WB positive control: Human lung cancer tissue<br>IHC: 25-100<br>Positive control: Human liver cancer<br>Predicted cell location: Cytoplasm   |
| Reactivity:             | Human, Mouse, Rat  |
| Host:                   | Rabbit   |
| Isotype:                | IgG  |
| Clonality:              | Polyclonal   |
| Immunogen:              | Fusion protein corresponding to a region derived from 21-321 amino acids of human spermatogenesis associated 6   |
| Formulation:            | PBS pH7.3, 0.05% NaN <sub>3</sub> , 50% glycerol   |
| Concentration:          | lot specific   |
| Purification:           | Antigen affinity purification  |
| Conjugation:            | Unconjugated   |
| Storage:                | Store at -20°C as received.  |
| Stability:              | Stable for 12 months from date of receipt.   |
| Predicted Protein Size: | 56 kDa   |
| Gene Name:              | spermatogenesis associated 6   |
| Database Link:          | <a href="#">NP_061946</a><br><a href="#">Entrez Gene 67946 Mouse</a> <a href="#">Entrez Gene 171413 Rat</a> <a href="#">Entrez Gene 54558 Human</a><br><a href="#">Q9NWH7</a>  |
| Background:             | The Spata6 gene consists of 15 exons ranging in size between 40 and 596 bp. It may play a role in spermatid maturation or sperm function. The Spata6 gene was localized to chromosome 5, region q34-35 in the rat and to chromosome 1, region p32-35 in the human. |
| Synonyms:               | HASH; SRF-1; SRF1  |



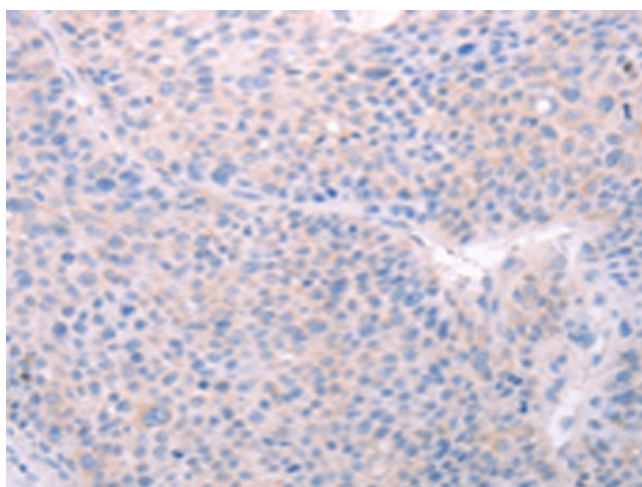
[View online »](#)

Protein Families: Secreted Protein

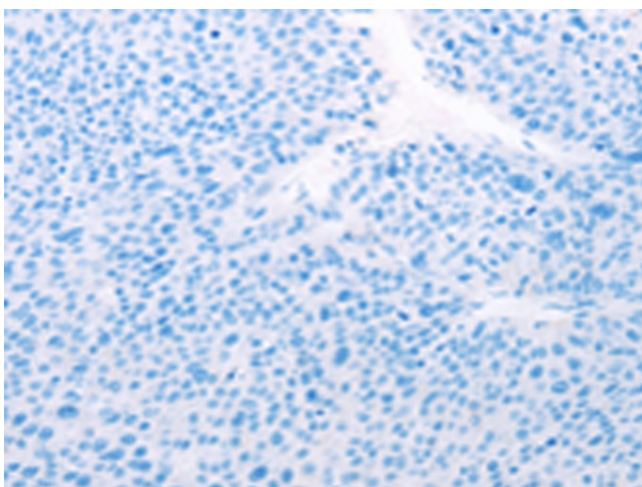
### Product images:



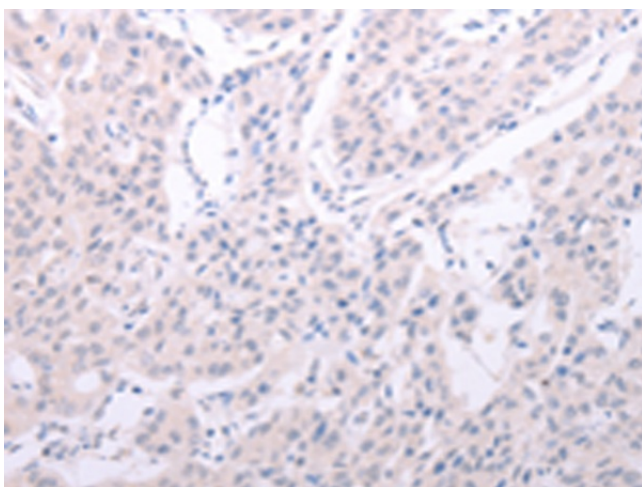
Gel: 8%SDS-PAGE  
Lysate: 40  $\mu$ g  
Lane: Human lung cancer tissue  
Primary antibody: TA322284 (SPATA6 Antibody)  
at dilution 1/200  
Secondary antibody: Goat anti rabbit IgG at  
1/8000 dilution  
Exposure time: 10 seconds



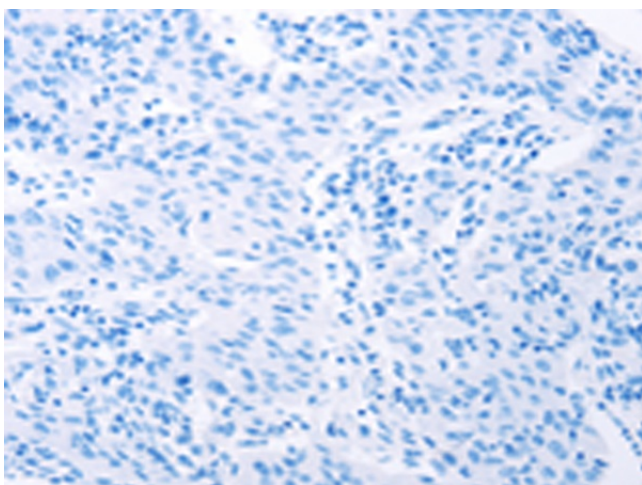
Immunohistochemistry of paraffin-embedded  
Human liver cancer tissue using TA322284  
(SPATA6 Antibody) at dilution 1/40 (Original  
magnification:  $\times$ 200)



Immunohistochemistry of paraffin-embedded Human liver cancer tissue using TA322284 (SPATA6 Antibody) at dilution 1/40, treated with fusion protein. (Original magnification:  $\times 200$ )



Immunohistochemistry of paraffin-embedded Human lung cancer tissue using TA322284 (SPATA6 Antibody) at dilution 1/40 (Original magnification:  $\times 200$ )



Immunohistochemistry of paraffin-embedded Human lung cancer tissue using TA322284 (SPATA6 Antibody) at dilution 1/40, treated with fusion protein. (Original magnification:  $\times 200$ )