

Product datasheet for **TA322283**

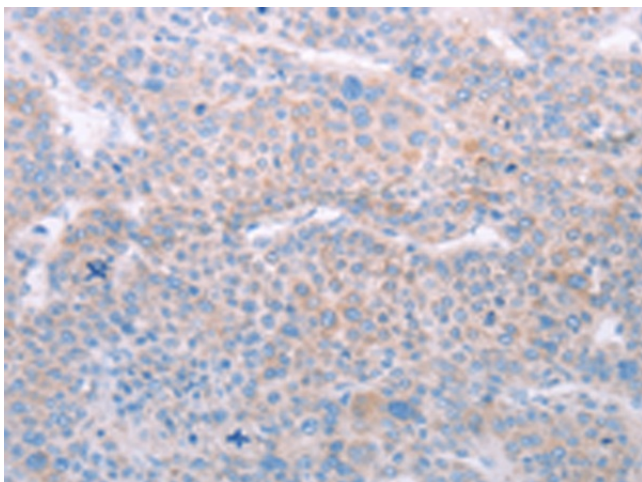
SPATA6 Rabbit Polyclonal Antibody

Product data:

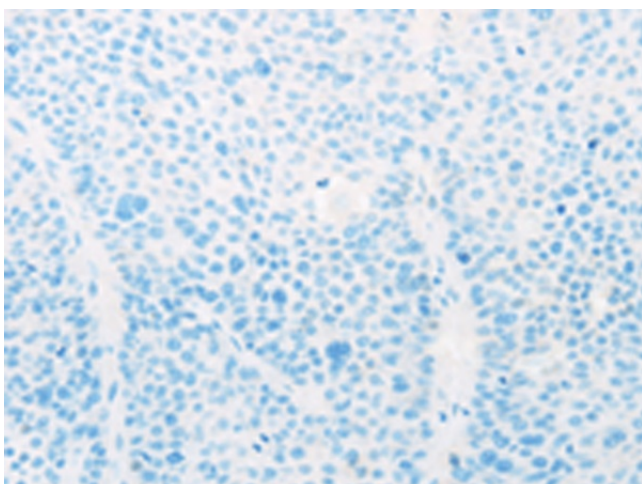
Product Type:	Primary Antibodies
Applications:	IHC
Recommended Dilution:	IHC: 25-100 Positive control: Human liver cancer Predicted cell location: Cytoplasm
Reactivity:	Human, Mouse, Rat
Host:	Rabbit
Isotype:	IgG
Clonality:	Polyclonal
Immunogen:	Fusion protein corresponding to a region derived from 21-321 amino acids of human spermatogenesis associated 6
Formulation:	PBS pH7.3, 0.05% NaN ₃ , 50% glycerol
Concentration:	lot specific
Purification:	Antigen affinity purification
Conjugation:	Unconjugated
Storage:	Store at -20°C as received.
Stability:	Stable for 12 months from date of receipt.
Gene Name:	spermatogenesis associated 6
Database Link:	NP_061946 Entrez Gene 67946 MouseEntrez Gene 171413 RatEntrez Gene 54558 Human Q9NWH7
Background:	The Spata6 gene consists of 15 exons ranging in size between 40 and 596 bp. It may play a role in spermatid maturation or sperm function. The Spata6 gene was localized to chromosome 5; region q34-35 in the rat and to chromosome 1; region p32-35 in the human.
Synonyms:	HASH; SRF-1; SRF1
Protein Families:	Secreted Protein



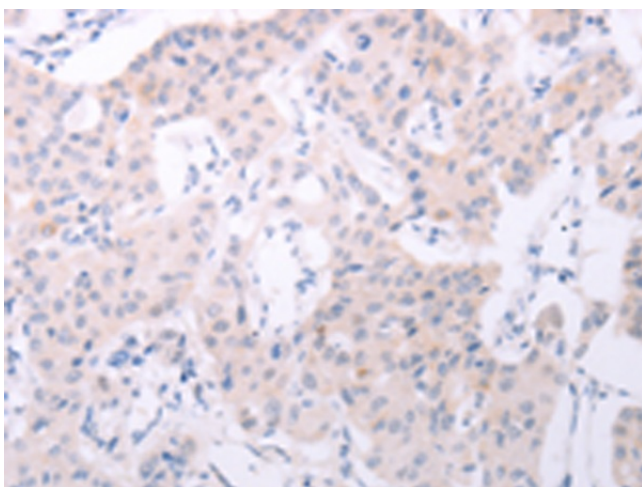
[View online »](#)

Product images:

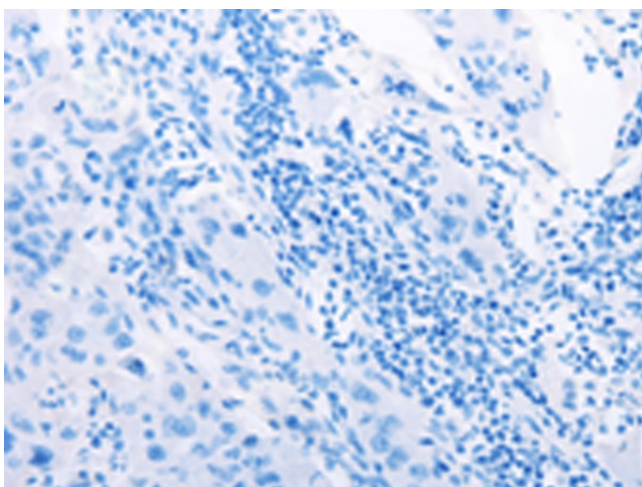
Immunohistochemistry of paraffin-embedded Human liver cancer tissue using TA322283 (SPATA6 Antibody) at dilution 1/50 (Original magnification: $\times 200$)



Immunohistochemistry of paraffin-embedded Human liver cancer tissue using TA322283 (SPATA6 Antibody) at dilution 1/50, treated with fusion protein. (Original magnification: $\times 200$)



Immunohistochemistry of paraffin-embedded Human lung cancer tissue using TA322283 (SPATA6 Antibody) at dilution 1/50 (Original magnification: $\times 200$)



Immunohistochemistry of paraffin-embedded Human lung cancer tissue using TA322283 (SPATA6 Antibody) at dilution 1/50, treated with fusion protein. (Original magnification: $\times 200$)