

## Product datasheet for **TA322282S**

### **TNXB Rabbit Polyclonal Antibody**

#### **Product data:**

Product Type:	Primary Antibodies
Applications:	IHC
Recommended Dilution:	IHC: 50-200 Positive control: Human ovarian cancer Predicted cell location: Secreted, ExtraCellular space, ExtraCellular matrix
Reactivity:	Human
Host:	Rabbit
Isotype:	IgG
Clonality:	Polyclonal
Immunogen:	Synthetic peptide corresponding to a region derived from 2629-2643 amino acids of human tenascin XB
Formulation:	PBS pH7.3, 0.05% NaN <sub>3</sub> , 50% glycerol
Purification:	Antigen affinity purification
Conjugation:	Unconjugated
Storage:	Store at -20°C as received.
Stability:	Stable for 12 months from date of receipt.
Gene Name:	tenascin XB
Database Link:	<a href="#">NP_061978</a> <a href="#">Entrez Gene 7148 Human</a> <a href="#">P22105</a>



[View online »](#)

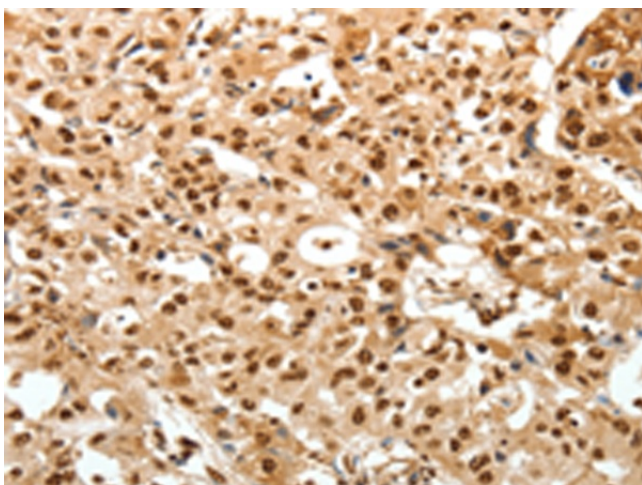
**Background:** This gene encodes a member of the tenascin family of extracellular matrix glycoproteins. The tenascins have anti-adhesive effects; as opposed to fibronectin which is adhesive. This protein is thought to function in matrix maturation during wound healing; and its deficiency has been associated with the connective tissue disorder Ehlers-Danlos syndrome. This gene localizes to the major histocompatibility complex (MHC) class III region on chromosome 6. It is one of four genes in this cluster which have been duplicated. The duplicated copy of this gene is incomplete and is a pseudogene which is transcribed but does not encode a protein. The structure of this gene is unusual in that it overlaps the CREBL1 and CYP21A2 genes at its 5' and 3' ends; respectively. Multiple transcript variants encoding different isoforms have been found for this gene.

**Synonyms:** EDS3; HXBL; TENX; TN-X; TNX; TNXB1; TNXB2; TNXBS; VUR8; XB; XBS

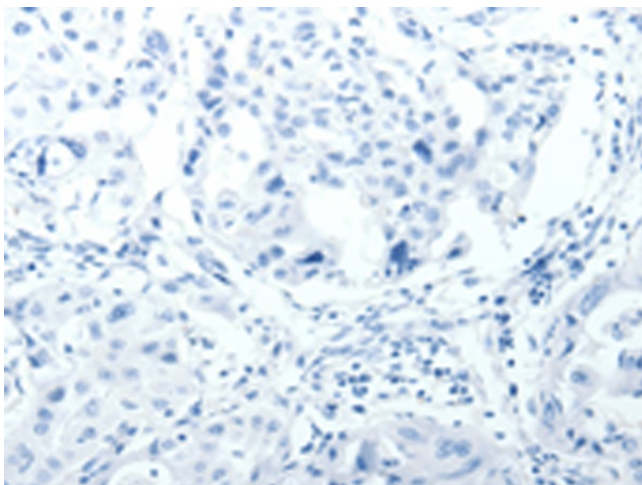
**Protein Families:** Druggable Genome, Secreted Protein

**Protein Pathways:** ECM-receptor interaction, Focal adhesion

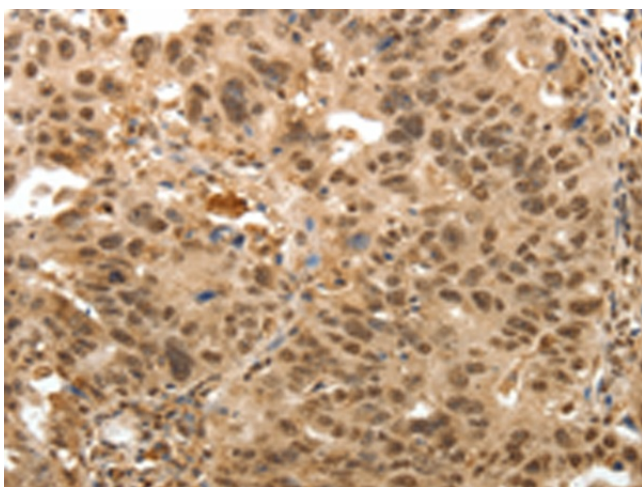
### Product images:



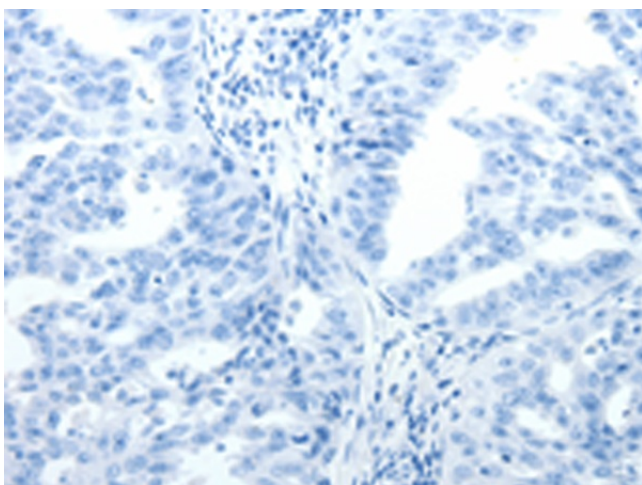
Immunohistochemistry of paraffin-embedded Human ovarian cancer tissue using [TA322282] (TNXB Antibody) at dilution 1/30 (Original magnification:  $\times 200$ )



Immunohistochemistry of paraffin-embedded Human ovarian cancer tissue using [TA322282] (TNXB Antibody) at dilution 1/30, treated with synthetic peptide. (Original magnification:  $\times 200$ )



Immunohistochemistry of paraffin-embedded Human lung cancer tissue using [TA322282] (TNXB Antibody) at dilution 1/30 (Original magnification:  $\times 200$ )



Immunohistochemistry of paraffin-embedded Human lung cancer tissue using [TA322282] (TNXB Antibody) at dilution 1/30, treated with synthetic peptide. (Original magnification:  $\times 200$ )