

Product datasheet for **TA322277**

GSK3 alpha (GSK3A) Rabbit Polyclonal Antibody

Product data:

| | |
|-----------------------|--|
| Product Type: | Primary Antibodies |
| Applications: | IHC |
| Recommended Dilution: | IHC: 50-200 Positive control: Human colon cancer Predicted cell location: Cytoplasm |
| Reactivity: | Human |
| Host: | Rabbit |
| Isotype: | IgG |
| Clonality: | Polyclonal |
| Immunogen: | Synthetic peptide corresponding to a region derived from 458-467 amino acids of Human glycogen synthase kinase 3 alpha |
| Formulation: | PBS pH7.3, 0.05% NaN ₃ , 50% glycerol |
| Concentration: | lot specific |
| Purification: | Antigen affinity purification |
| Conjugation: | Unconjugated |
| Storage: | Store at -20°C as received. |
| Stability: | Stable for 12 months from date of receipt. |
| Gene Name: | glycogen synthase kinase 3 alpha |
| Database Link: | NP_063937 Entrez Gene 2931 Human P49840 |



[View online »](#)

Background:

This gene encodes a multifunctional Ser/Thr protein kinase that is implicated in the control of several regulatory proteins including glycogen synthase; and transcription factors; such as JUN. It also plays a role in the WNT and PI3K signaling pathways; as well as regulates the production of beta-amyloid peptides associated with Alzheimer's disease. May also mediate the development of insulin resistance by regulating activation of transcription factors. In Wnt signaling; regulates the level and transcriptional activity of nuclear CTNNB1/beta-catenin. Facilitates amyloid precursor protein (APP) processing and the generation of APP-derived amyloid plaques found in Alzheimer disease. May be involved in the regulation of replication in pancreatic beta-cells. Is necessary for the establishment of neuronal polarity and axon outgrowth.

Synonyms:

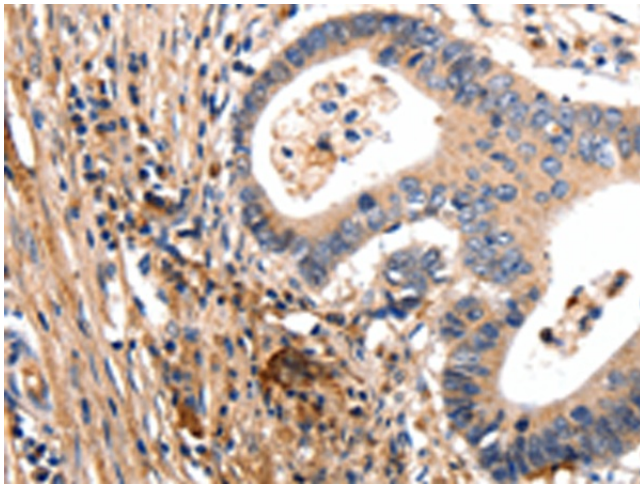
DKFZp686D0638

Protein Families:

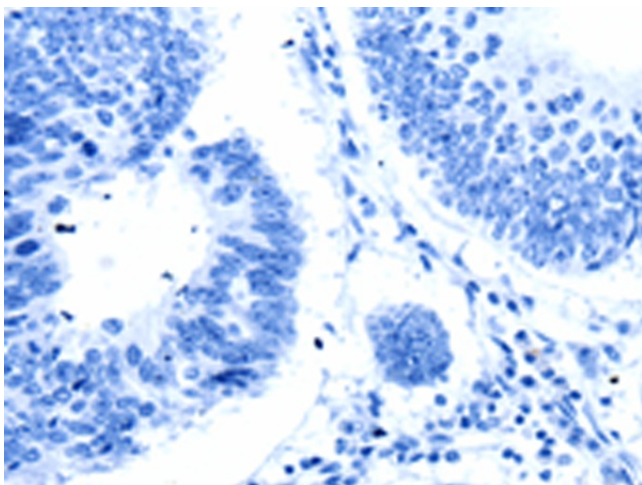
Druggable Genome, Protein Kinase

Protein Pathways:

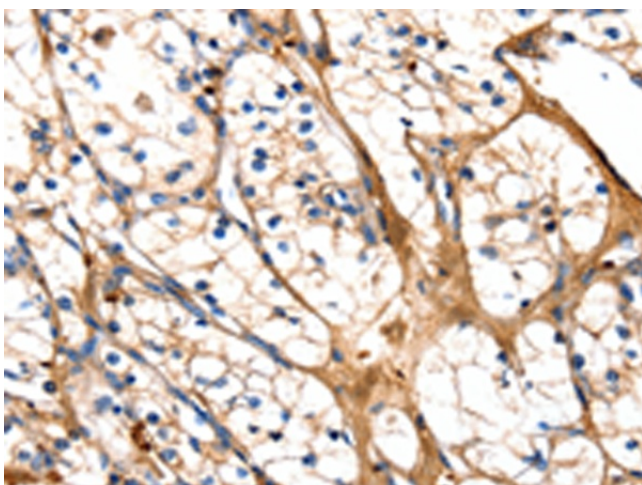
Chemokine signaling pathway

Product images:

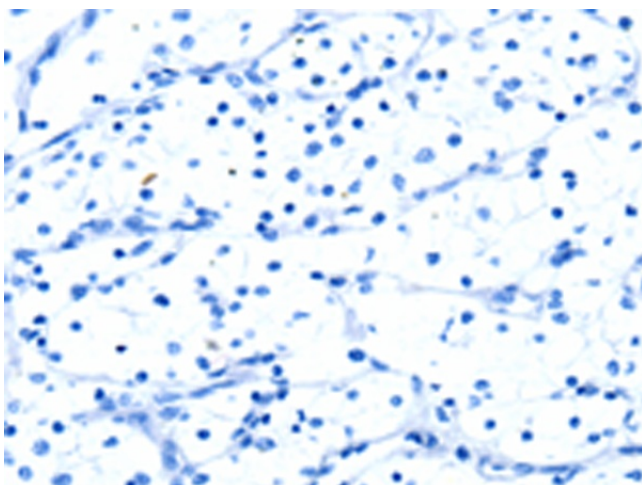
Immunohistochemistry of paraffin-embedded Human colon cancer tissue using TA322277 (GSK3A Antibody) at dilution 1/50 (Original magnification: $\times 200$)



Immunohistochemistry of paraffin-embedded Human colon cancer tissue using TA322277 (GSK3A Antibody) at dilution 1/50, treated with synthetic peptide. (Original magnification: x200)



Immunohistochemistry of paraffin-embedded Human renal cancer tissue using TA322277 (GSK3A Antibody) at dilution 1/50 (Original magnification: x200)



Immunohistochemistry of paraffin-embedded Human renal cancer tissue using TA322277 (GSK3A Antibody) at dilution 1/50, treated with synthetic peptide. (Original magnification: x200)