

Product datasheet for **TA322275**

GSK3 alpha (GSK3A) Rabbit Polyclonal Antibody

Product data:

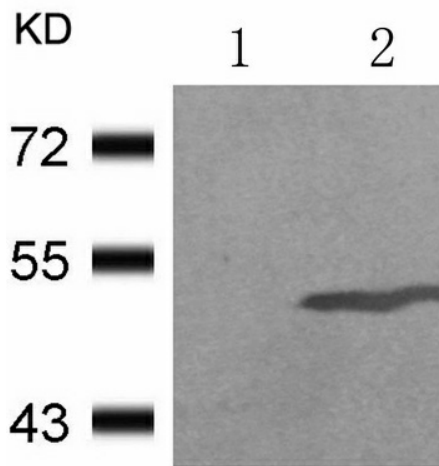
Product Type:	Primary Antibodies
Applications:	IF, IHC, WB
Recommended Dilution:	WB: 1:500-1000, IHC: 1:50-100, IF: 1:100-200
Reactivity:	Human, Mouse, Rat
Modifications:	Phospho-specific
Host:	Rabbit
Isotype:	IgG
Clonality:	Polyclonal
Immunogen:	Peptide sequence around phosphorylation site of serine 21 (T-S-S(p)-F-A) derived from Human GSK3a.
Formulation:	PBS pH7.3, 0.05% NaN ₃ , 50% glycerol
Concentration:	lot specific
Purification:	Antigen affinity purification
Conjugation:	Unconjugated
Storage:	Store at -20°C as received.
Stability:	Stable for 12 months from date of receipt.
Predicted Protein Size:	51 kDa
Gene Name:	glycogen synthase kinase 3 alpha
Database Link:	NP_063937 Entrez Gene 50686 Rat Entrez Gene 606496 Mouse Entrez Gene 2931 Human P49840
Background:	This gene encodes a multifunctional Ser/Thr protein kinase that is implicated in the control of several regulatory proteins including glycogen synthase, and transcription factors, such as JUN. It also plays a role in the WNT and PI3K signaling pathways, as well as regulates the production of beta-amyloid peptides associated with Alzheimer's disease.
Synonyms:	DKFZp686D0638
Protein Families:	Druggable Genome, Protein Kinase



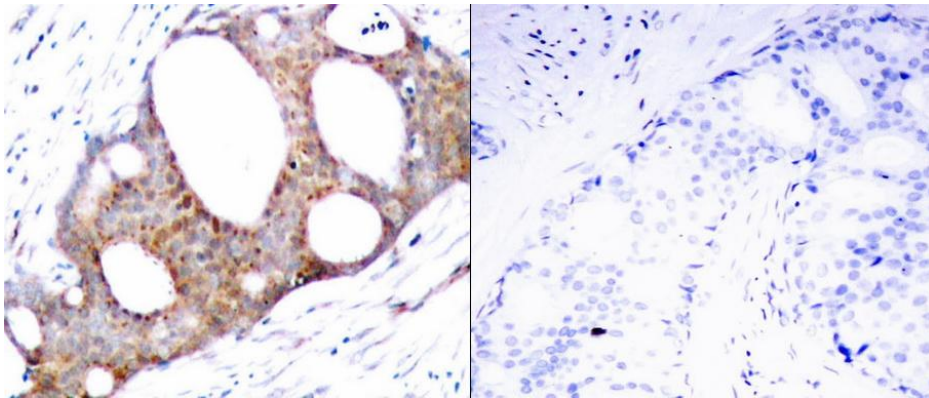
[View online »](#)

Protein Pathways: Chemokine signaling pathway

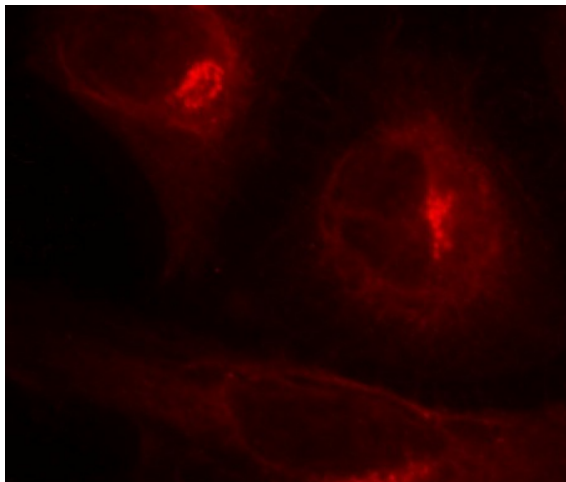
Product images:



Predicted band size: 51 kDa. Positive control: 293 cells untreated or treated with serum lysate. Recommended dilution: 1/ 500-1000. (Gel: 10%SDS-PAGE Lane 1: 293 cells untreated with serum lysate Lane 2: 293 cells treated with serum lysate Lysates: 30 ug per lane Primary antibody: 1/500 dilution Secondary antibody: Goat anti Rabbit IgG - H&L (HRP) at 1/10000 dilution Exposure time: 1 minute)



Predicted cell location: Cytoplasm. Positive control: Human breast carcinoma tissue. Recommended dilution: 1/ 50-100 The image on the left is immunohistochemistry of paraffin-embedded human breast carcinoma tissue using GSK3A (Phospho-Ser21) antibody at dilution 1/50, on the right is treated with the synthetic peptide. (Original magnification:x200)



Predicted cell location: Cytoplasm. Positive control: HeLa cells. Recommended dilution: 1/ 100-200 The image is immunofluorescence of methanol-fixed HeLa cells using GSK3A (Phospho-Ser21) antibody at dilution 1/100. (Original magnification:x200)