

Product datasheet for **TA322274**

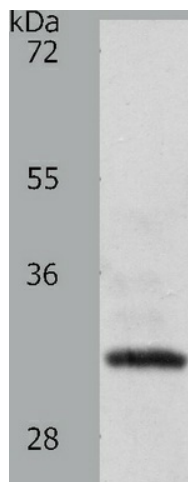
SLC2A4RG Rabbit Polyclonal Antibody

Product data:

| | |
|-------------------------|--|
| Product Type: | Primary Antibodies |
| Applications: | WB |
| Recommended Dilution: | ELISA: 1:1000-5000, WB: 1:200-1000 |
| Reactivity: | Human, Mouse, Rat |
| Host: | Rabbit |
| Isotype: | IgG |
| Clonality: | Polyclonal |
| Immunogen: | Synthetic peptide corresponding to a region derived from 351-368 amino acids of human SLC2A4 regulator |
| Formulation: | PBS pH7.3, 0.05% NaN ₃ , 50% glycerol |
| Concentration: | lot specific |
| Purification: | Antigen affinity purification |
| Conjugation: | Unconjugated |
| Storage: | Store at -20°C as received. |
| Stability: | Stable for 12 months from date of receipt. |
| Predicted Protein Size: | 41 kDa |
| Gene Name: | SLC2A4 regulator |
| Database Link: | NP_064446 Entrez Gene 56731 Human Q9NR83 |
| Background: | SLC2A4 regulator is a protein that in humans is encoded by the SLC2A4RG gene. The protein encoded by this gene is a nuclear transcription factor involved in the activation of the solute carrier family 2 member 4 gene. The encoded protein interacts with another transcription factor; myocyte enhancer factor 2; to activate transcription of this gene |
| Synonyms: | GEF; HDBP-1; HDBP1; Si-1-2; Si-1-2-19 |
| Protein Families: | Transcription Factors |



[View online »](#)

Product images:

Predicted band size: 41 kDa. Positive control: Human fetal kidney tissue lysate. Recommended dilution: 1/200-1000. (Gel: 10%SDS-PAGE Lysate: 50 ug per lane Primary antibody: 1/250 dilution Secondary antibody: Goat anti Rabbit IgG - H&L (HRP) at 1/10000 dilution Exposure time: 1 hour)