

Product datasheet for **TA322271**

CRMP5 (DPYSL5) Rabbit Polyclonal Antibody

Product data:

Product Type:	Primary Antibodies
Applications:	IHC, WB
Recommended Dilution:	WB: 200-1000 WB positive control: Mouse brain tissue lysate IHC: 50-100 Positive control: Human ovarian cancer Predicted cell location: Cytoplasm
Reactivity:	Human, Mouse, Rat
Host:	Rabbit
Isotype:	IgG
Clonality:	Polyclonal
Immunogen:	Synthetic peptide corresponding to a region derived from 504-518 amino acids of Human Collapsin response mediator protein 5
Formulation:	PBS pH7.3, 0.05% NaN ₃ , 50% glycerol
Concentration:	lot specific
Purification:	Antigen affinity purification
Conjugation:	Unconjugated
Storage:	Store at -20°C as received.
Stability:	Stable for 12 months from date of receipt.
Predicted Protein Size:	62 kDa
Gene Name:	dihydropyrimidinase like 5
Database Link:	NP_064519 Entrez Gene 65208 Rat Entrez Gene 65254 Mouse Entrez Gene 56896 Human Q9BPU6



[View online »](#)

Background:

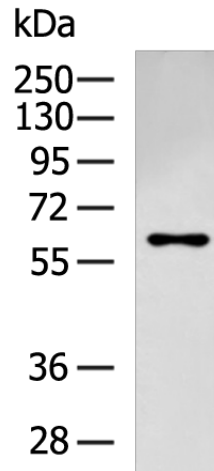
This gene encodes a member of the CRMP (collapsing response mediator protein) family thought to be involved in neural development. Antibodies to the encoded protein were found in some patients with neurologic symptoms who had paraneoplastic syndrome. A pseudogene of this gene is found on chromosome 11. Multiple alternatively spliced variants; encoding the same protein; have been identified.

Synonyms:

CRAM; CRMP-5; CRMP5; Ulip6

Protein Pathways:

Axon guidance

Product images:

Gel: 8%SDS-PAGE

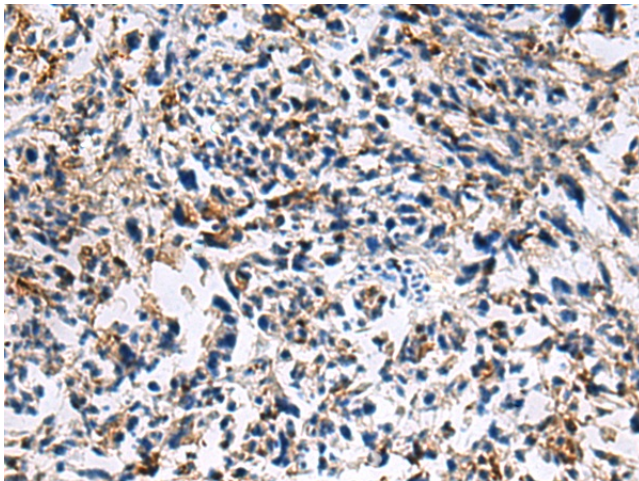
Lysate: 40 µg

Lane: Mouse brain tissue lysate

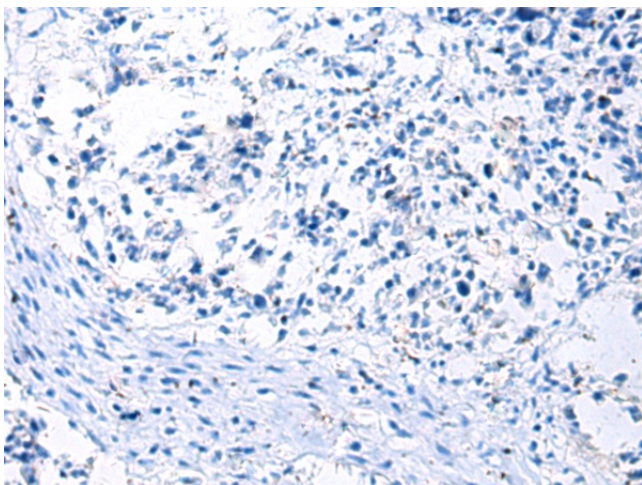
Primary antibody: TA322271 (DPYSL5 Antibody) at dilution 1/400

Secondary antibody: Goat anti rabbit IgG at 1/5000 dilution

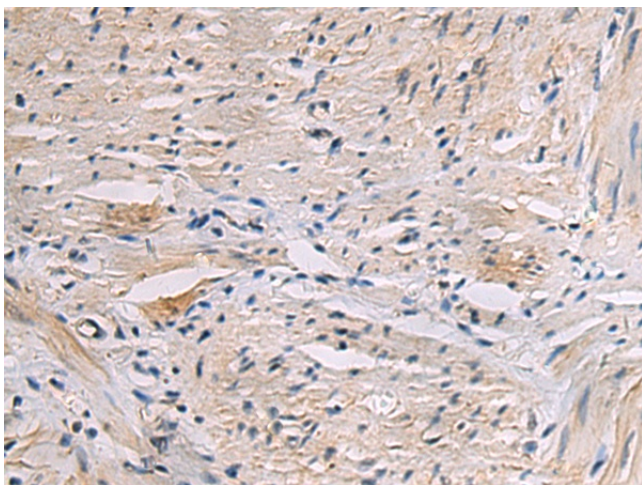
Exposure time: 20 seconds



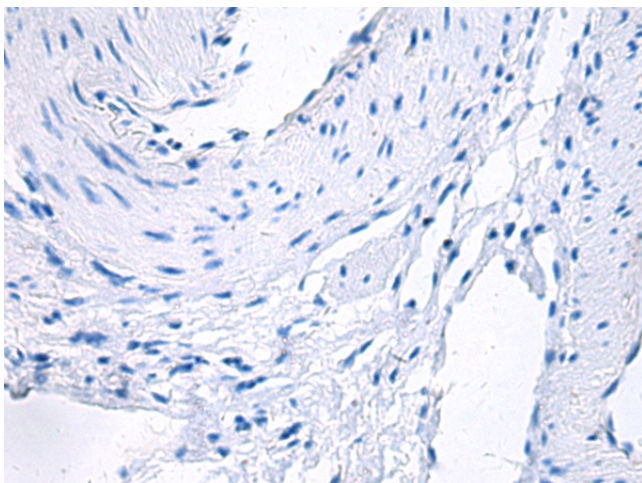
Immunohistochemistry of paraffin-embedded Human ovarian cancer tissue using TA322271 (DPYSL5 Antibody) at dilution 1/25 (Original magnification: ×200)



Immunohistochemistry of paraffin-embedded Human ovarian cancer tissue using TA322271 (DPYSL5 Antibody) at dilution 1/25, treated with synthetic peptide. (Original magnification: ×200)



Immunohistochemistry of paraffin-embedded Human gastric cancer tissue using TA322271 (DPYSL5 Antibody) at dilution 1/25 (Original magnification: ×200)



Immunohistochemistry of paraffin-embedded Human gastric cancer tissue using TA322271 (DPYSL5 Antibody) at dilution 1/25, treated with synthetic peptide. (Original magnification: ×200)