

## Product datasheet for **TA322270S**

### SEMA3G Rabbit Polyclonal Antibody

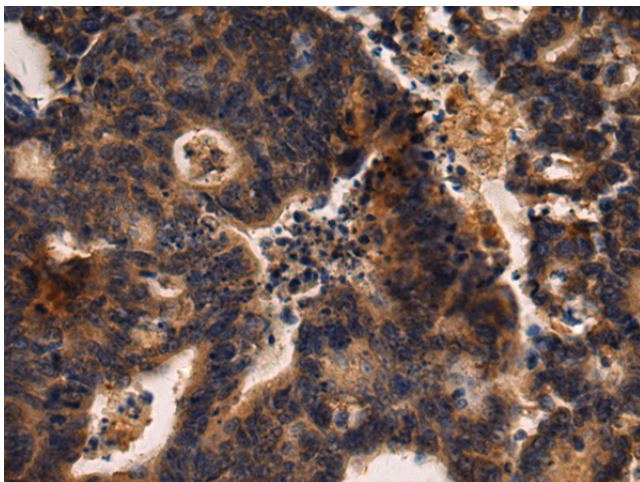
#### Product data:

Product Type:	Primary Antibodies
Applications:	IHC
Recommended Dilution:	IHC: 50-200 Positive control: Human colorectal cancer Predicted cell location: Secreted
Reactivity:	Human
Host:	Rabbit
Isotype:	IgG
Clonality:	Polyclonal
Immunogen:	Fusion protein corresponding to C terminal 250 amino acids of human sema domain, immunoglobulin domain (Ig), short basic domain, secreted, (semaphorin) 3G
Formulation:	PBS pH7.3, 0.05% NaN <sub>3</sub> , 50% glycerol
Purification:	Antigen affinity purification
Conjugation:	Unconjugated
Storage:	Store at -20°C as received.
Stability:	Stable for 12 months from date of receipt.
Gene Name:	semaphorin 3G
Database Link:	<a href="#">NP_064548</a> <a href="#">Entrez Gene 56920 Human</a> <a href="#">Q9NS98</a>
Background:	Semaphorins are a class of secreted and membrane proteins that act as axonal growth cone guidance molecules. They primarily act as short-range inhibitory signals and signal through multimeric receptor complexes. They are usually cues to deflect axons from inappropriate regions; especially important in neural system development. The major class of proteins that act as their receptors are called plexins. SEMA3G possesses anti-migration and anti-invasion ability. SEMA3G inhibited tumor cell migration and invasion; which may be obtained through cell autonomous or paracrine mechanisms; and SEMA3G is a potential target for antitumor migration and invasion.

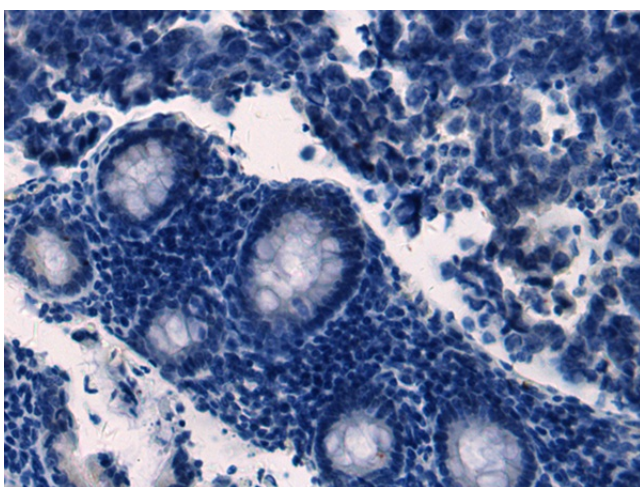


[View online »](#)

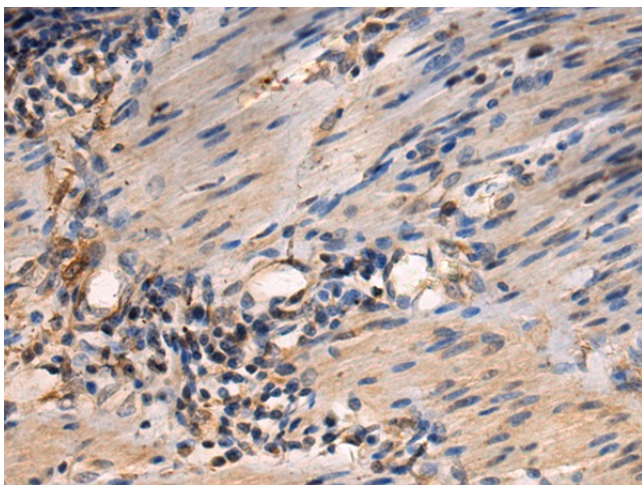
Synonyms: sem2  
Protein Families: Druggable Genome, Secreted Protein  
Protein Pathways: Axon guidance

**Product images:**

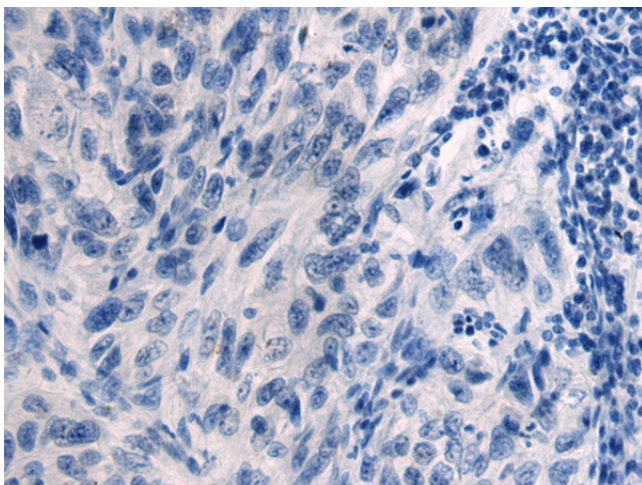
Immunohistochemistry of paraffin-embedded Human colorectal cancer tissue using [TA322270] (SEMA3G Antibody) at dilution 1/70 (Original magnification:  $\times 200$ )



Immunohistochemistry of paraffin-embedded Human colorectal cancer tissue using [TA322270] (SEMA3G Antibody) at dilution 1/70, treated with fusion protein. (Original magnification:  $\times 200$ )



Immunohistochemistry of paraffin-embedded Human esophagus cancer tissue using [TA322270] (SEMA3G Antibody) at dilution 1/70 (Original magnification:  $\times 200$ )



Immunohistochemistry of paraffin-embedded Human esophagus cancer tissue using [TA322270] (SEMA3G Antibody) at dilution 1/70, treated with fusion protein. (Original magnification:  $\times 200$ )