

Product datasheet for **TA322270**

SEMA3G Rabbit Polyclonal Antibody

Product data:

Product Type:	Primary Antibodies
Applications:	IHC
Recommended Dilution:	IHC: 50-200 Positive control: Human colorectal cancer Predicted cell location: Secreted
Reactivity:	Human
Host:	Rabbit
Isotype:	IgG
Clonality:	Polyclonal
Immunogen:	Fusion protein corresponding to C terminal 250 amino acids of human sema domain, immunoglobulin domain (Ig), short basic domain, secreted, (semaphorin) 3G
Formulation:	PBS pH7.3, 0.05% NaN ₃ , 50% glycerol
Concentration:	lot specific
Purification:	Antigen affinity purification
Conjugation:	Unconjugated
Storage:	Store at -20°C as received.
Stability:	Stable for 12 months from date of receipt.
Gene Name:	semaphorin 3G
Database Link:	NP_064548 Entrez Gene 56920 Human Q9NS98



[View online »](#)

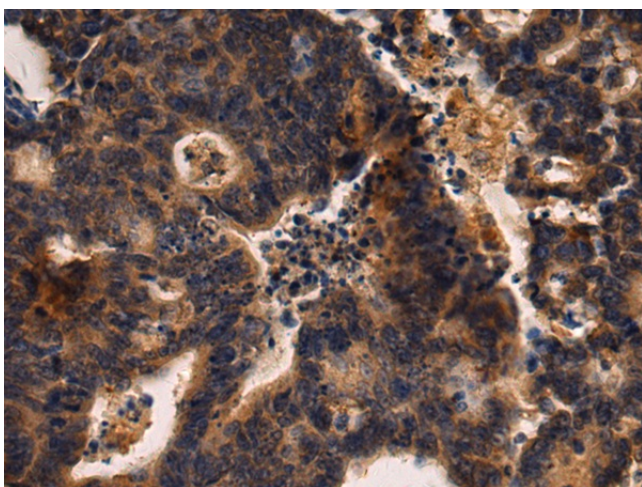
Background: Semaphorins are a class of secreted and membrane proteins that act as axonal growth cone guidance molecules. They primarily act as short-range inhibitory signals and signal through multimeric receptor complexes. They are usually cues to deflect axons from inappropriate regions; especially important in neural system development. The major class of proteins that act as their receptors are called plexins. SEMA3G possesses anti-migration and anti-invasion ability. SEMA3G inhibited tumor cell migration and invasion; which may be obtained through cell autonomous or paracrine mechanisms; and SEMA3G is a potential target for antitumor migration and invasion.

Synonyms: sem2

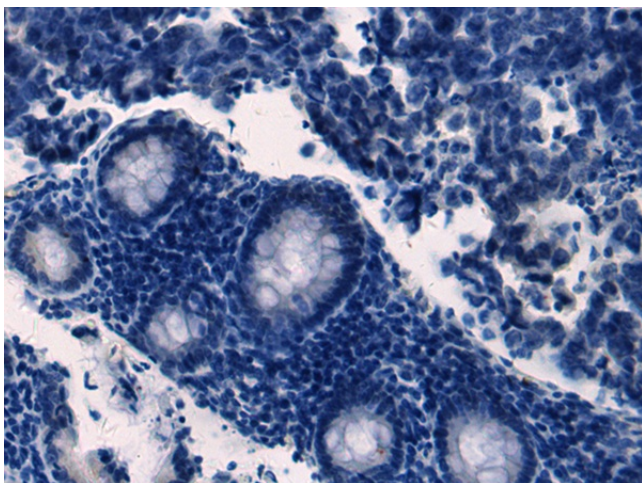
Protein Families: Druggable Genome, Secreted Protein

Protein Pathways: Axon guidance

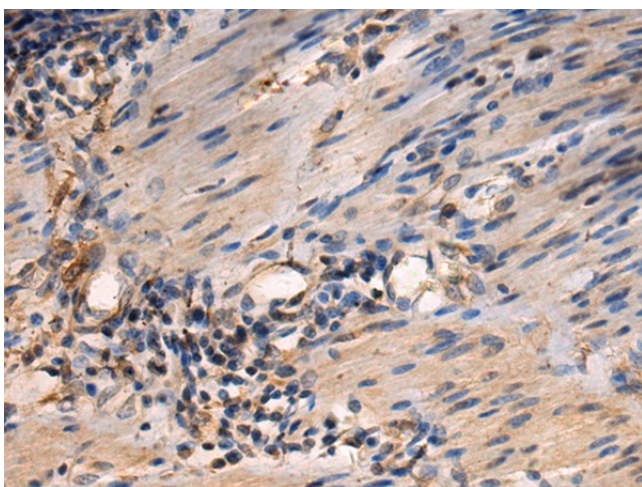
Product images:



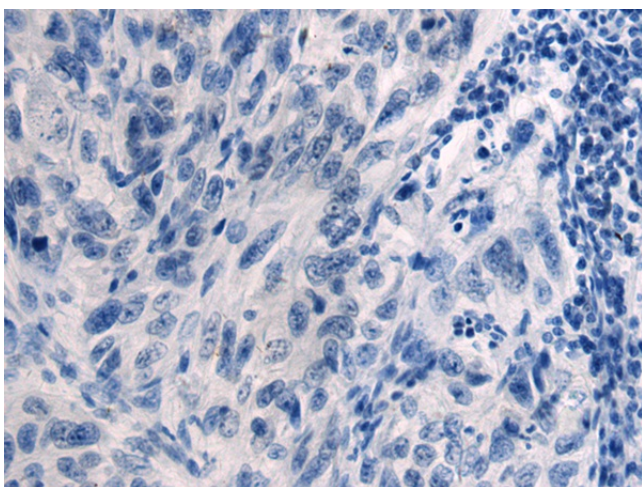
Immunohistochemistry of paraffin-embedded Human colorectal cancer tissue using TA322270 (SEMA3G Antibody) at dilution 1/70 (Original magnification: x200)



Immunohistochemistry of paraffin-embedded Human colorectal cancer tissue using TA322270 (SEMA3G Antibody) at dilution 1/70, treated with fusion protein. (Original magnification: x200)



Immunohistochemistry of paraffin-embedded Human esophagus cancer tissue using TA322270 (SEMA3G Antibody) at dilution 1/70 (Original magnification: ×200)



Immunohistochemistry of paraffin-embedded Human esophagus cancer tissue using TA322270 (SEMA3G Antibody) at dilution 1/70, treated with fusion protein. (Original magnification: ×200)