

## Product datasheet for **TA322268**

### VANGL2 Rabbit Polyclonal Antibody

#### Product data:

Product Type:	Primary Antibodies
Applications:	IHC, WB
Recommended Dilution:	WB: 200-1000 WB positive control: NIH/3T3 cells IHC: 15-50 Positive control: Human lung cancer Predicted cell location: Cytoplasm
Reactivity:	Human, Mouse, Rat
Host:	Rabbit
Isotype:	IgG
Clonality:	Polyclonal
Immunogen:	Synthetic peptide corresponding to a region derived from 20-34 amino acids of human vang-like 2 (van gogh, Drosophila)
Formulation:	PBS pH7.3, 0.05% NaN <sub>3</sub> , 50% glycerol
Concentration:	lot specific
Purification:	Antigen affinity purification
Conjugation:	Unconjugated
Storage:	Store at -20°C as received.
Stability:	Stable for 12 months from date of receipt.
Predicted Protein Size:	60 kDa
Gene Name:	VANGL planar cell polarity protein 2
Database Link:	<a href="#">NP_065068</a> <a href="#">Entrez Gene 93840 Mouse</a> <a href="#">Entrez Gene 289229 Rat</a> <a href="#">Entrez Gene 57216 Human</a> <a href="#">Q9ULK5</a>



[View online »](#)

**Background:**

The protein encoded by this gene is a membrane protein involved in the regulation of planar cell polarity; especially in the stereociliary bundles of the cochlea. The encoded protein transmits directional signals to individual cells or groups of cells in epithelial sheets. This protein is also involved in the development of the neural plate. Plays a role in the regulation of planar cell polarity; particularly in the orientation of stereociliary bundles in the cochlea. Required for polarization and movement of myocardializing cells in the outflow tract and seems to act via RHOA signaling to regulate this process.

**Synonyms:**

LPP1; LTAP; STB1; STBM; STBM1

**Protein Families:**

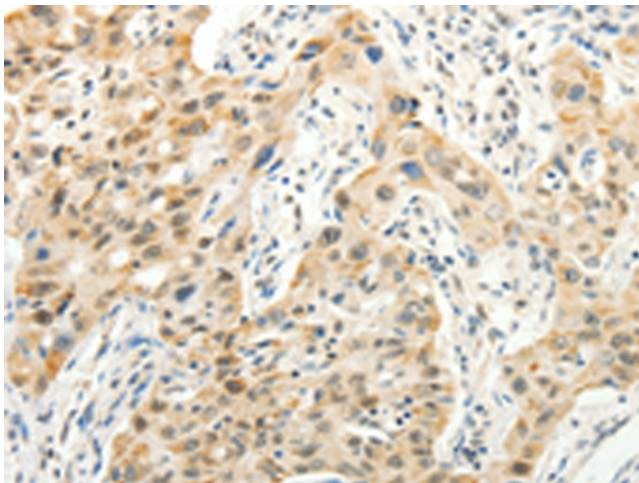
Transmembrane

**Protein Pathways:**

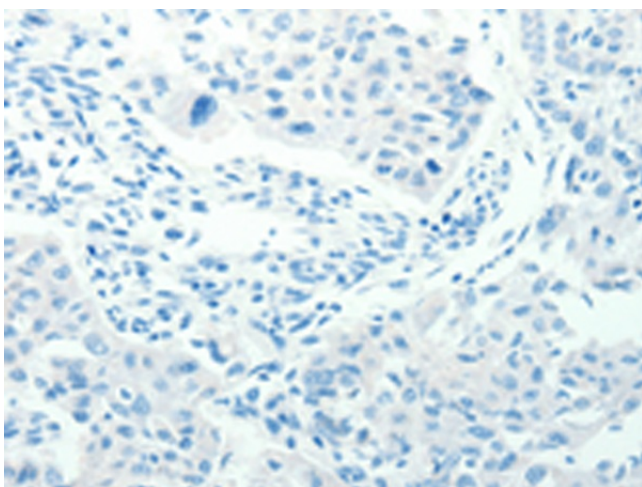
Wnt signaling pathway

**Product images:**


Gel: 10%SDS-PAGE  
 Lysate: 40 µg  
 Lane: NIH/3T3 cells  
 Primary antibody: TA322268 (VANGL2 Antibody) at dilution 1/250  
 Secondary antibody: Goat anti rabbit IgG at 1/8000 dilution  
 Exposure time: 2 seconds



Immunohistochemistry of paraffin-embedded Human lung cancer tissue using TA322268 (VANGL2 Antibody) at dilution 1/15 (Original magnification: ×200)



Immunohistochemistry of paraffin-embedded Human lung cancer tissue using TA322268 (VANGL2 Antibody) at dilution 1/15, treated with synthetic peptide. (Original magnification:  $\times 200$ )