

## Product datasheet for **TA322266**

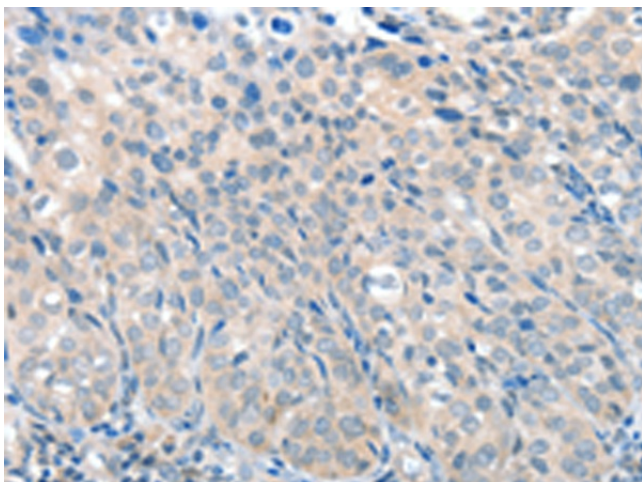
### VGLUT2 (SLC17A6) Rabbit Polyclonal Antibody

#### Product data:

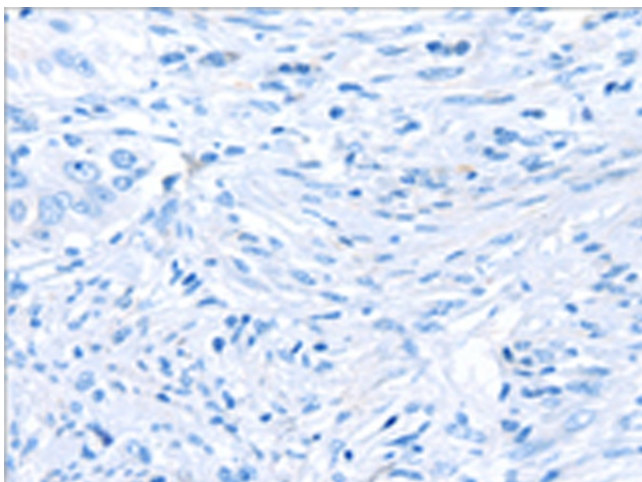
Product Type:	Primary Antibodies
Applications:	IHC
Recommended Dilution:	IHC: 50-200 Positive control: Human cervical cancer Predicted cell location: Cytoplasm
Reactivity:	Human, Mouse, Rat
Host:	Rabbit
Isotype:	IgG
Clonality:	Polyclonal
Immunogen:	Synthetic peptide corresponding to a region derived from 2-15 amino acids of human solute carrier family 17 (sodium-dependent inorganic phosphate cotransporter), member 6
Formulation:	PBS pH7.3, 0.05% NaN <sub>3</sub> , 50% glycerol
Concentration:	lot specific
Purification:	Antigen affinity purification
Conjugation:	Unconjugated
Storage:	Store at -20°C as received.
Stability:	Stable for 12 months from date of receipt.
Gene Name:	solute carrier family 17 member 6
Database Link:	<a href="#">NP_065079</a> <a href="#">Entrez Gene 84487 Rat</a> <a href="#">Entrez Gene 140919 Mouse</a> <a href="#">Entrez Gene 57084 Human</a> <a href="#">Q9P2U8</a>
Background:	Mediates the uptake of glutamate into synaptic vesicles at presynaptic nerve terminals of excitatory neural cells. May also mediate the transport of inorganic phosphate. Predominantly expressed in adult brain. Expressed in amygdala; caudate nucleus; cerebral cortex; frontal lobe; hippocampus; medulla; occipital lobe; putamen; spinal cord; substantia nigra; subthalamic nucleus; temporal lobe and thalamus. Expressed in fetal brain.
Synonyms:	DNPI; VGLUT2
Protein Families:	Transmembrane



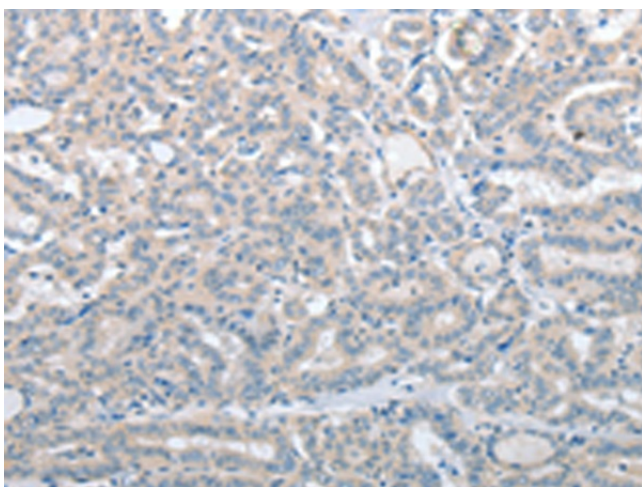
[View online »](#)

**Product images:**

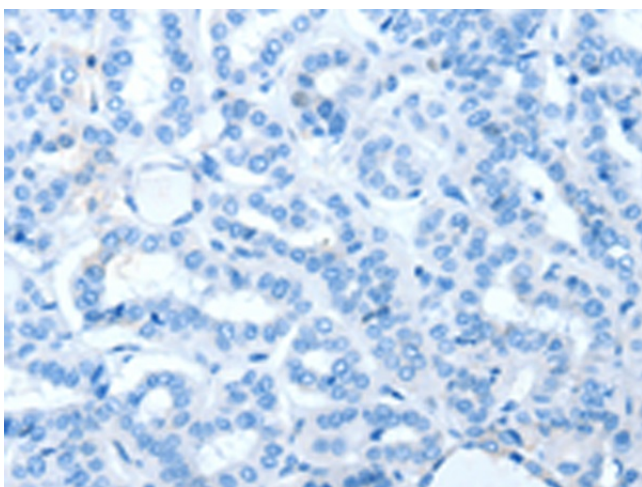
Immunohistochemistry of paraffin-embedded Human cervical cancer tissue using TA322266 (SLC17A6 Antibody) at dilution 1/100 (Original magnification:  $\times 200$ )



Immunohistochemistry of paraffin-embedded Human cervical cancer tissue using TA322266 (SLC17A6 Antibody) at dilution 1/100, treated with synthetic peptide. (Original magnification:  $\times 200$ )



Immunohistochemistry of paraffin-embedded Human thyroid cancer tissue using TA322266 (SLC17A6 Antibody) at dilution 1/100 (Original magnification:  $\times 200$ )



Immunohistochemistry of paraffin-embedded Human thyroid cancer tissue using TA322266 (SLC17A6 Antibody) at dilution 1/100, treated with synthetic peptide. (Original magnification:  $\times 200$ )