

Product datasheet for **TA322263S**

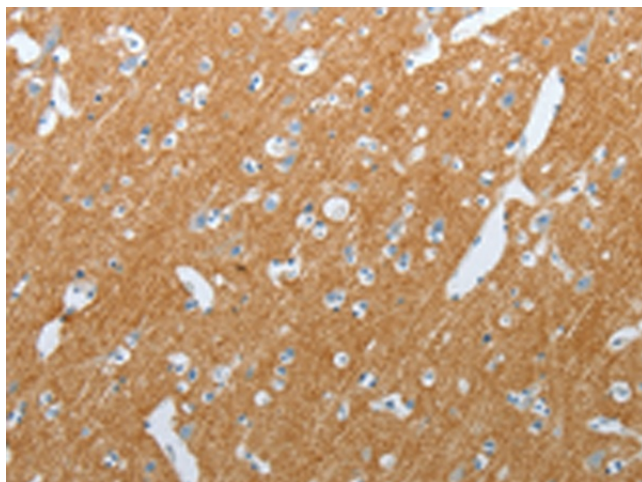
VGLUT1 (SLC17A7) Rabbit Polyclonal Antibody

Product data:

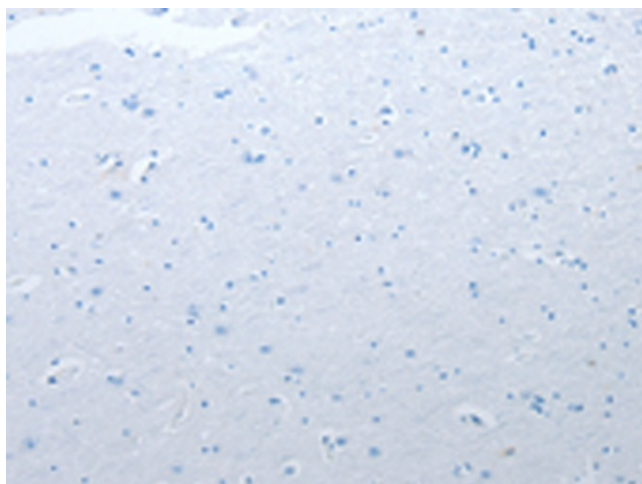
Product Type:	Primary Antibodies
Applications:	IHC
Recommended Dilution:	IHC: 200-500 Positive control: Human brain Predicted cell location: Cytoplasm
Reactivity:	Human, Mouse, Rat
Host:	Rabbit
Isotype:	IgG
Clonality:	Polyclonal
Immunogen:	Synthetic peptide corresponding to a region derived from 547-560 amino acids of human solute carrier family 17 (sodium-dependent inorganic phosphate cotransporter), member 7
Formulation:	PBS pH7.3, 0.05% NaN ₃ , 50% glycerol
Purification:	Antigen affinity purification
Conjugation:	Unconjugated
Storage:	Store at -20°C as received.
Stability:	Stable for 12 months from date of receipt.
Gene Name:	solute carrier family 17 member 7
Database Link:	NP_064705 Entrez Gene 72961 Mouse Entrez Gene 116638 Rat Entrez Gene 57030 Human Q9P2U7
Background:	The protein encoded by this gene is a vesicle-bound; sodium-dependent phosphate transporter that is specifically expressed in the neuron-rich regions of the brain. It is preferentially associated with the membranes of synaptic vesicles and functions in glutamate transport. The protein shares 82% identity with the differentiation-associated Na-dependent inorganic phosphate cotransporter and they appear to form a distinct class within the Na ⁺ /Pi cotransporter family.
Synonyms:	BNPI; VGLUT1
Protein Families:	Transmembrane



[View online »](#)

Product images:

Immunohistochemistry of paraffin-embedded Human brain tissue using [TA322263] (SLC17A7 Antibody) at dilution 1/200 (Original magnification: $\times 200$)



Immunohistochemistry of paraffin-embedded Human brain tissue using [TA322263] (SLC17A7 Antibody) at dilution 1/200, treated with synthetic peptide. (Original magnification: $\times 200$)