

## Product datasheet for **TA322262**

### TIGAR Rabbit Polyclonal Antibody

#### Product data:

Product Type:	Primary Antibodies
Applications:	IHC, WB
Recommended Dilution:	WB: 200-1000 WB positive control: Human normal liver tissue IHC: 100-300 Positive control: Human cervical cancer Predicted cell location: Nucleus,Cytoplasm
Reactivity:	Human
Host:	Rabbit
Isotype:	IgG
Clonality:	Polyclonal
Immunogen:	Synthetic peptide corresponding to a region derived from 145-159 amino acids of human chromosome 12 open reading frame 5
Formulation:	PBS pH7.3, 0.05% NaN <sub>3</sub> , 50% glycerol
Concentration:	lot specific
Purification:	Antigen affinity purification
Conjugation:	Unconjugated
Storage:	Store at -20°C as received.
Stability:	Stable for 12 months from date of receipt.
Gene Name:	TP53 induced glycolysis regulatory phosphatase
Database Link:	<a href="#">NP_065108</a> <a href="#">Entrez Gene 57103 Human</a> <a href="#">Q9NQ88</a>



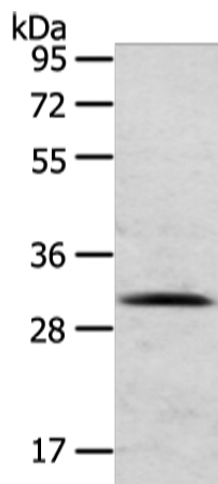
[View online »](#)

**Background:**

This gene is regulated as part of the p53 tumor suppressor pathway and encodes a protein with sequence similarity to the bisphosphate domain of the glycolytic enzyme that degrades fructose-2;6-bisphosphate. The protein functions by blocking glycolysis and directing the pathway into the pentose phosphate shunt. Expression of this protein also protects cells from DNA damaging reactive oxygen species and provides some protection from DNA damage-induced apoptosis. The 12p13.32 region that includes this gene is paralogous to the 11q13.3 region.

**Synonyms:**

C12orf5; FR2BP

**Product images:**

Gel: 8%SDS-PAGE

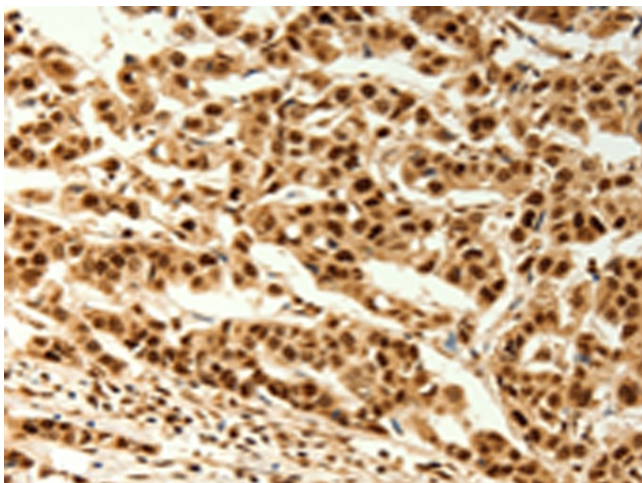
Lysate: 40 µg

Lane: Human normal liver tissue

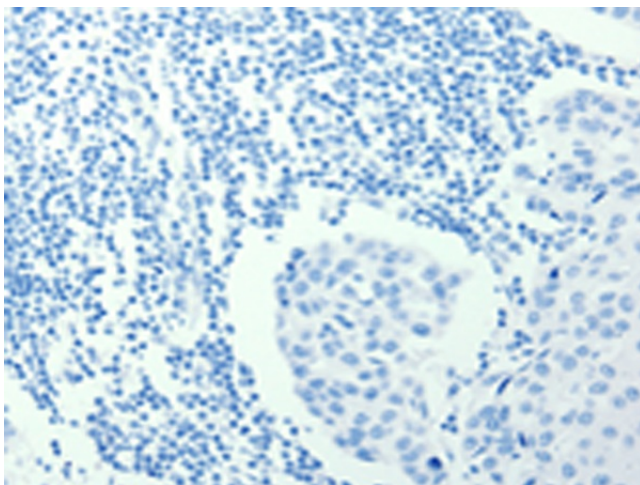
Primary antibody: TA322262 (TIGAR Antibody) at dilution 1/200

Secondary antibody: Goat anti rabbit IgG at 1/8000 dilution

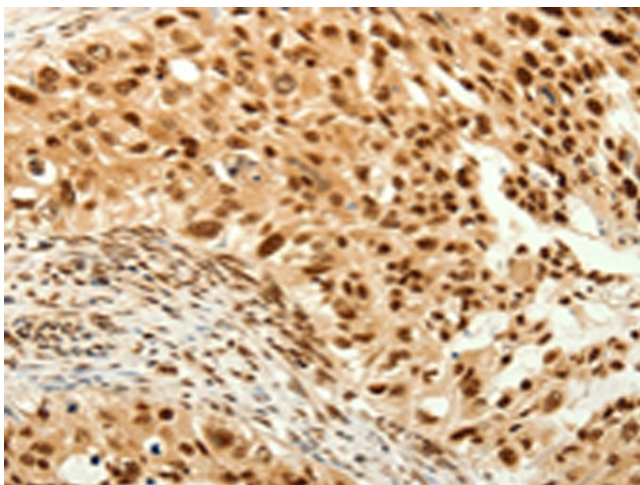
Exposure time: 10 seconds



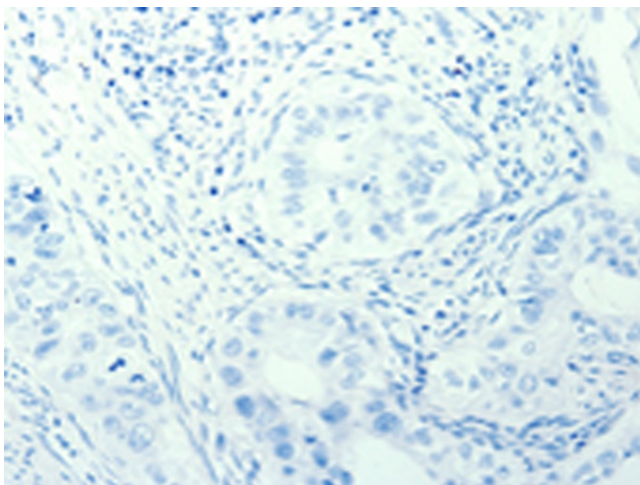
Immunohistochemistry of paraffin-embedded Human cervical cancer tissue using TA322262 (TIGAR Antibody) at dilution 1/80 (Original magnification: ×200)



Immunohistochemistry of paraffin-embedded Human cervical cancer tissue using TA322262 (TIGAR Antibody) at dilution 1/80, treated with synthetic peptide. (Original magnification:  $\times 200$ )



Immunohistochemistry of paraffin-embedded Human breast cancer tissue using TA322262 (TIGAR Antibody) at dilution 1/80 (Original magnification:  $\times 200$ )



Immunohistochemistry of paraffin-embedded Human breast cancer tissue using TA322262 (TIGAR Antibody) at dilution 1/80, treated with synthetic peptide. (Original magnification:  $\times 200$ )