

Product datasheet for **TA322261**

SLC22A17 Rabbit Polyclonal Antibody

Product data:

Product Type:	Primary Antibodies
Applications:	IHC, WB
Recommended Dilution:	WB: 500-2000 WB positive control: Human esophagus cancer tissue IHC: 25-100 Positive control: Human esophagus cancer Predicted cell location: Cytoplasm
Reactivity:	Human, Mouse, Rat
Host:	Rabbit
Isotype:	IgG
Clonality:	Polyclonal
Immunogen:	Synthetic peptide corresponding to a region derived from 511-524 amino acids of human solute carrier family 22, member 17
Formulation:	PBS pH7.3, 0.05% NaN ₃ , 50% glycerol
Concentration:	lot specific
Purification:	Antigen affinity purification
Conjugation:	Unconjugated
Storage:	Store at -20°C as received.
Stability:	Stable for 12 months from date of receipt.
Predicted Protein Size:	56 kDa
Gene Name:	solute carrier family 22 member 17
Database Link:	NP_065105 Entrez Gene 59049 Mouse Entrez Gene 305886 Rat Entrez Gene 51310 Human Q8WUG5



[View online »](#)

Background:

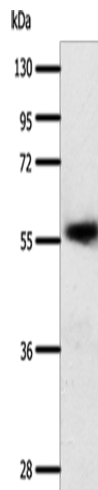
Cell surface receptor for LCN2 (24p3) that plays a key role in iron homeostasis and transport. Able to bind iron-bound LCN2 (holo-24p3); followed by internalization of holo-24p3 and release of iron; thereby increasing intracellular iron concentration and leading to inhibition of apoptosis. Also binds iron-free LCN2 (apo-24p3); followed by internalization of apo-24p3 and its association with an intracellular siderophore; leading to iron chelation and iron transfer to the extracellular medium; thereby reducing intracellular iron concentration and resulting in apoptosis.

Synonyms:

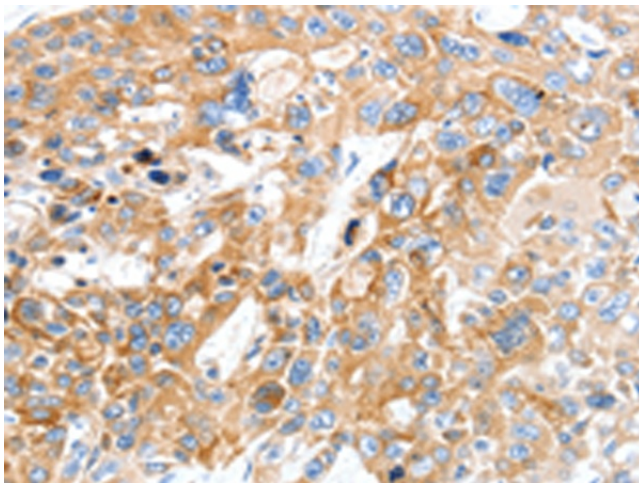
24p3R; BOCT; BOIT; hBOIT; NGALR; NGALR2; NGALR3

Protein Families:

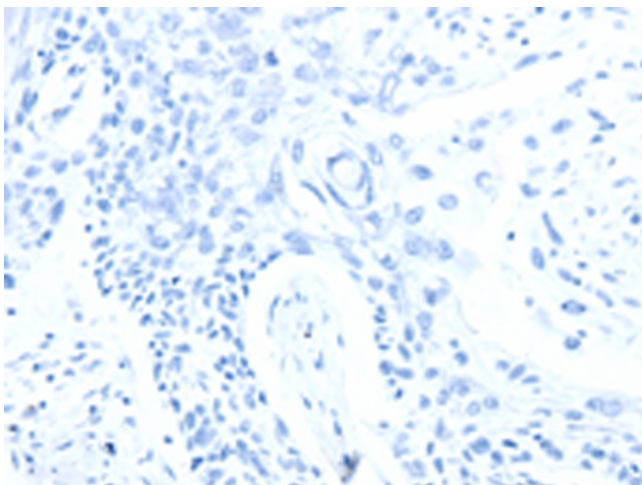
Druggable Genome, Transmembrane

Product images:

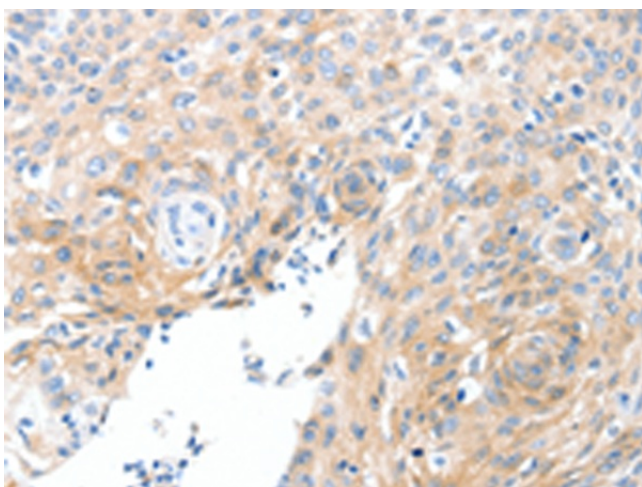
Gel: 10%SDS-PAGE
Lysate: 40 µg
Lane: Human esophagus cancer tissue
Primary antibody: TA322261 (SLC22A17 Antibody) at dilution 1/600
Secondary antibody: Goat anti rabbit IgG at 1/8000 dilution
Exposure time: 20 seconds



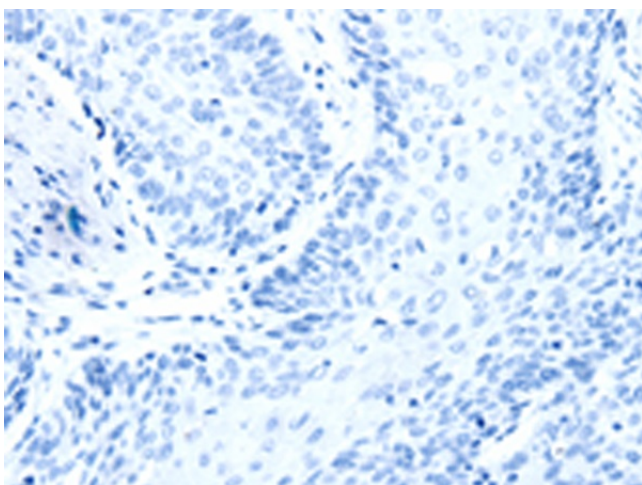
Immunohistochemistry of paraffin-embedded Human esophagus cancer tissue using TA322261 (SLC22A17 Antibody) at dilution 1/30 (Original magnification: ×200)



Immunohistochemistry of paraffin-embedded Human esophagus cancer tissue using TA322261 (SLC22A17 Antibody) at dilution 1/30, treated with synthetic peptide. (Original magnification: ×200)



Immunohistochemistry of paraffin-embedded Human cervical cancer tissue using TA322261 (SLC22A17 Antibody) at dilution 1/30 (Original magnification: ×200)



Immunohistochemistry of paraffin-embedded Human cervical cancer tissue using TA322261 (SLC22A17 Antibody) at dilution 1/30, treated with synthetic peptide. (Original magnification: ×200)