

Product datasheet for **TA322260S**

SLC22A17 Rabbit Polyclonal Antibody

Product data:

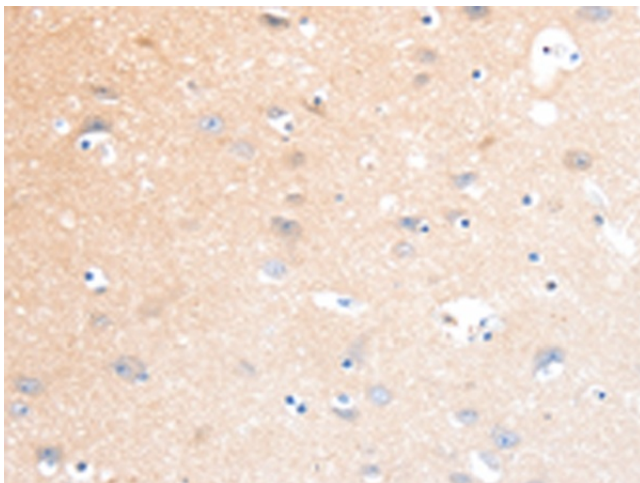
Product Type:	Primary Antibodies
Applications:	IHC
Recommended Dilution:	IHC: 25-100 Positive control: Human brain Predicted cell location: Cytoplasm
Reactivity:	Human, Mouse, Rat
Host:	Rabbit
Isotype:	IgG
Clonality:	Polyclonal
Immunogen:	Synthetic peptide corresponding to a region derived from 511-524 amino acids of human solute carrier family 22, member 17
Formulation:	PBS pH7.3, 0.05% NaN ₃ , 50% glycerol
Purification:	Antigen affinity purification
Conjugation:	Unconjugated
Storage:	Store at -20°C as received.
Stability:	Stable for 12 months from date of receipt.
Gene Name:	solute carrier family 22 member 17
Database Link:	NP_057693 Entrez Gene 59049 Mouse Entrez Gene 305886 Rat Entrez Gene 51310 Human Q8WUG5
Background:	Cell surface receptor for LCN2 (24p3) that plays a key role in iron homeostasis and transport. Able to bind iron-bound LCN2 (holo-24p3); followed by internalization of holo-24p3 and release of iron; thereby increasing intracellular iron concentration and leading to inhibition of apoptosis. Also binds iron-free LCN2 (apo-24p3); followed by internalization of apo-24p3 and its association with an intracellular siderophore; leading to iron chelation and iron transfer to the extracellular medium; thereby reducing intracellular iron concentration and resulting in apoptosis.
Synonyms:	24p3R; BOCT; BOIT; hBOIT; NGALR; NGALR2; NGALR3



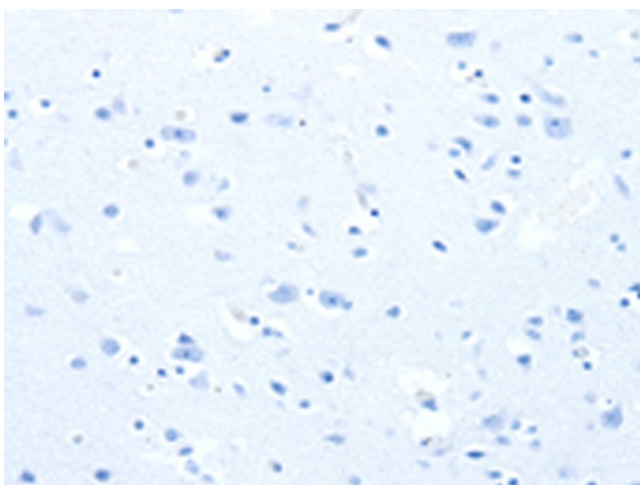
[View online »](#)

Protein Families: Druggable Genome, Transmembrane

Product images:



Immunohistochemistry of paraffin-embedded Human brain tissue using [TA322260] (SLC22A17 Antibody) at dilution 1/40 (Original magnification: ×200)



Immunohistochemistry of paraffin-embedded Human brain tissue using [TA322260] (SLC22A17 Antibody) at dilution 1/40, treated with synthetic peptide. (Original magnification: ×200)