

## Product datasheet for **TA322260**

### SLC22A17 Rabbit Polyclonal Antibody

#### Product data:

Product Type:	Primary Antibodies
Applications:	IHC
Recommended Dilution:	IHC: 25-100 Positive control: Human brain Predicted cell location: Cytoplasm
Reactivity:	Human, Mouse, Rat
Host:	Rabbit
Isotype:	IgG
Clonality:	Polyclonal
Immunogen:	Synthetic peptide corresponding to a region derived from 511-524 amino acids of human solute carrier family 22, member 17
Formulation:	PBS pH7.3, 0.05% NaN <sub>3</sub> , 50% glycerol
Concentration:	lot specific
Purification:	Antigen affinity purification
Conjugation:	Unconjugated
Storage:	Store at -20°C as received.
Stability:	Stable for 12 months from date of receipt.
Gene Name:	solute carrier family 22 member 17
Database Link:	<a href="#">NP_057693</a> <a href="#">Entrez Gene 59049 Mouse</a> <a href="#">Entrez Gene 305886 Rat</a> <a href="#">Entrez Gene 51310 Human</a> <a href="#">Q8WUG5</a>
Background:	Cell surface receptor for LCN2 (24p3) that plays a key role in iron homeostasis and transport. Able to bind iron-bound LCN2 (holo-24p3); followed by internalization of holo-24p3 and release of iron; thereby increasing intracellular iron concentration and leading to inhibition of apoptosis. Also binds iron-free LCN2 (apo-24p3); followed by internalization of apo-24p3 and its association with an intracellular siderophore; leading to iron chelation and iron transfer to the extracellular medium; thereby reducing intracellular iron concentration and resulting in apoptosis.

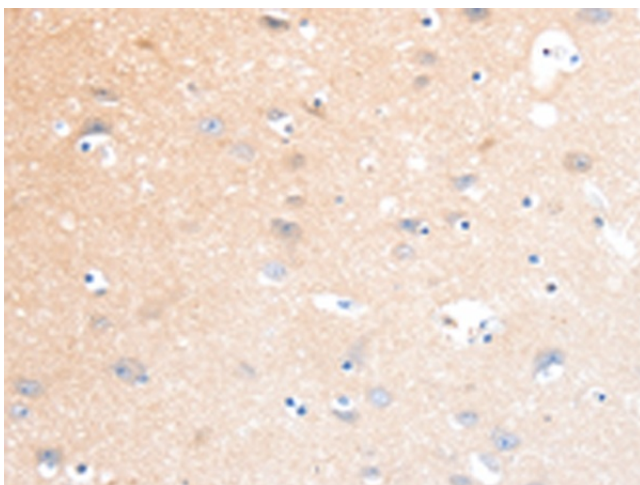


[View online »](#)

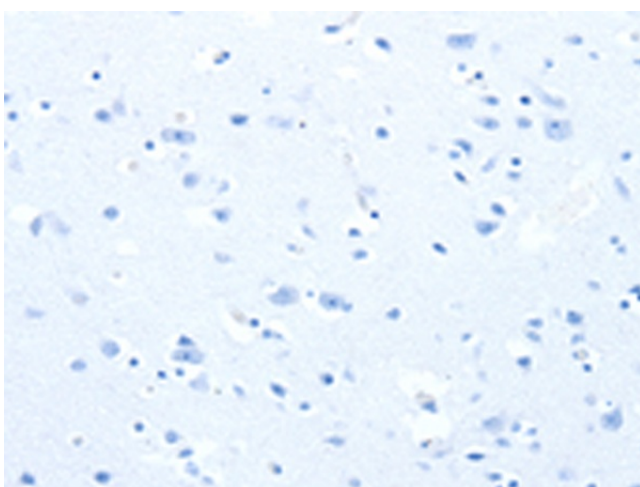
**Synonyms:** 24p3R; BOCT; BOIT; hBOIT; NGALR; NGALR2; NGALR3

**Protein Families:** Druggable Genome, Transmembrane

**Product images:**



Immunohistochemistry of paraffin-embedded Human brain tissue using TA322260 (SLC22A17 Antibody) at dilution 1/40 (Original magnification: ×200)



Immunohistochemistry of paraffin-embedded Human brain tissue using TA322260 (SLC22A17 Antibody) at dilution 1/40, treated with synthetic peptide. (Original magnification: ×200)