

Product datasheet for **TA322259S**

AVEN Rabbit Polyclonal Antibody

Product data:

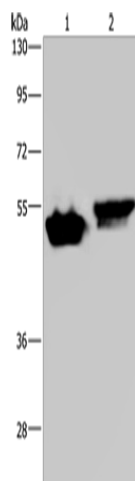
Product Type:	Primary Antibodies
Applications:	IHC, WB
Recommended Dilution:	WB: 500-2000 WB positive control: Raji and Hela cells IHC: 25-100 Positive control: Human lung cancer Predicted cell location: Cytoplasm
Reactivity:	Human, Mouse
Host:	Rabbit
Isotype:	IgG
Clonality:	Polyclonal
Immunogen:	Synthetic peptide corresponding to a region derived from 339-353 amino acids of Human Apoptosis, caspase activation inhibitor
Formulation:	PBS pH7.3, 0.05% NaN ₃ , 50% glycerol
Purification:	Antigen affinity purification
Conjugation:	Unconjugated
Storage:	Store at -20°C as received.
Stability:	Stable for 12 months from date of receipt.
Predicted Protein Size:	39 kDa
Gene Name:	apoptosis and caspase activation inhibitor
Database Link:	NP_065104 Entrez Gene 74268 Mouse Entrez Gene 57099 Human Q9NQS1
Background:	Aven binds to both Bcl-x(L) and the caspase regulator Apaf-1; which can supported that Bcl-x(L) inhibits cell death at a late (postmitochondrial) step in the death pathway. Identified in a yeast two-hybrid screen; Aven inhibited the proteolytic activation of caspases in a cell-free extract and suppressed apoptosis induced by Apaf-1 plus caspase-9. Expressing highly in the testis; ovary; and thymus .



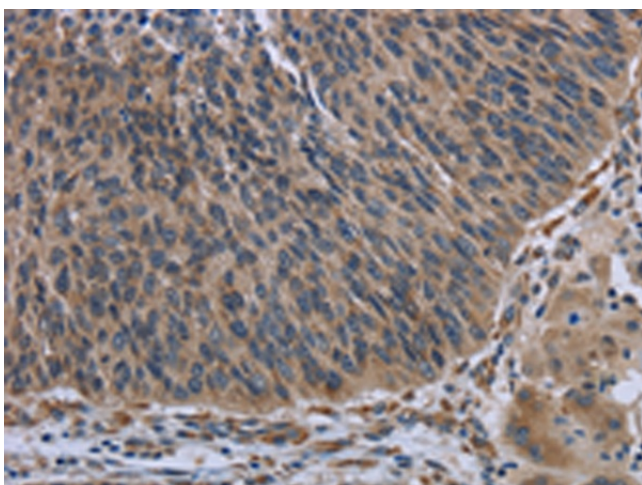
[View online »](#)

Synonyms: PDCD12

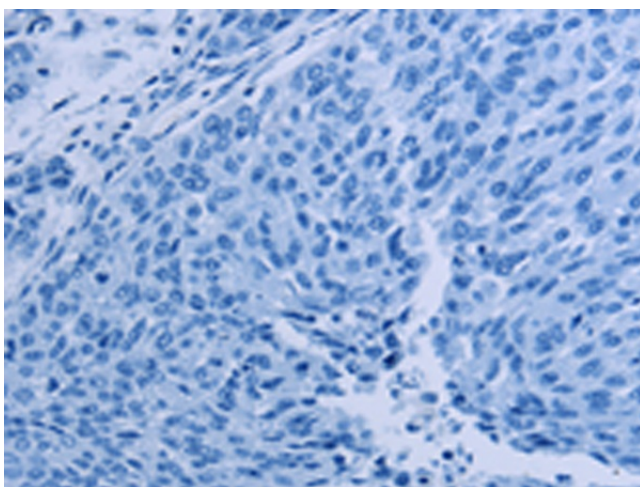
Product images:



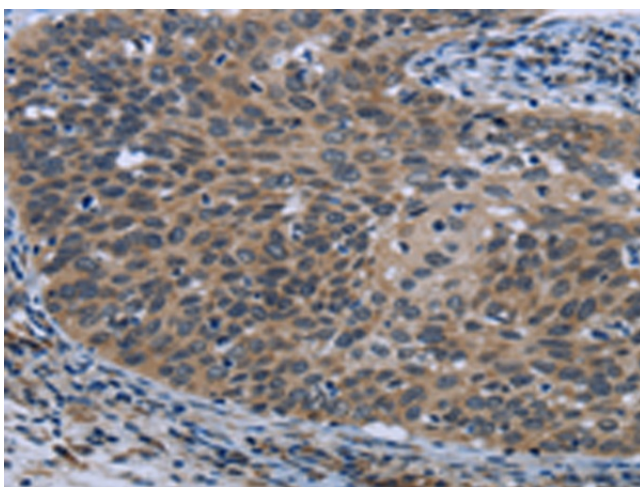
Gel: 8%SDS-PAGE
Lysate: 40 μ g
Lane 1-2: Raji cells
Hela cells
Primary antibody: [TA322259] (AVEN Antibody) at dilution 1/200
Secondary antibody: Goat anti rabbit IgG at 1/8000 dilution
Exposure time: 2 minutes



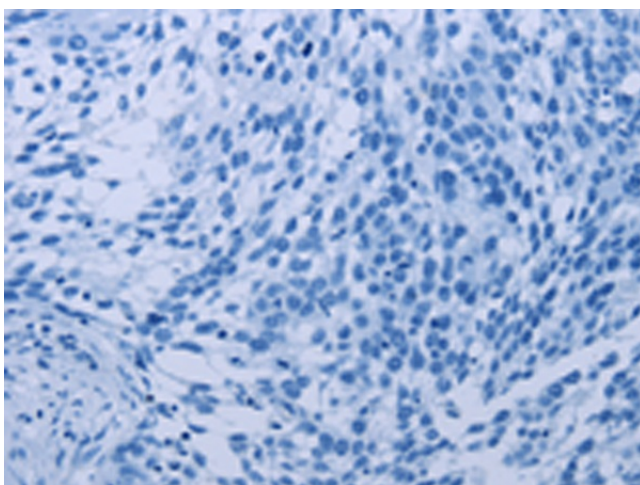
Immunohistochemistry of paraffin-embedded Human lung cancer tissue using [TA322259] (AVEN Antibody) at dilution 1/30 (Original magnification: \times 200)



Immunohistochemistry of paraffin-embedded Human lung cancer tissue using [TA322259] (AVEN Antibody) at dilution 1/30, treated with synthetic peptide. (Original magnification: $\times 200$)



Immunohistochemistry of paraffin-embedded Human cervical cancer tissue using [TA322259] (AVEN Antibody) at dilution 1/30 (Original magnification: $\times 200$)



Immunohistochemistry of paraffin-embedded Human cervical cancer tissue using [TA322259] (AVEN Antibody) at dilution 1/30, treated with synthetic peptide. (Original magnification: $\times 200$)