

## Product datasheet for **TA322258**

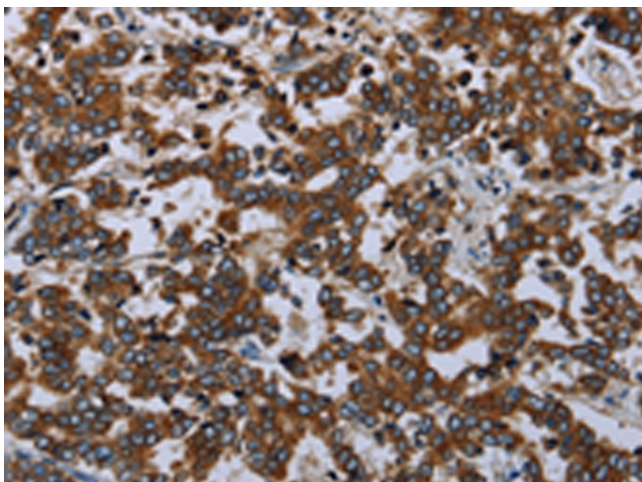
### AVEN Rabbit Polyclonal Antibody

#### Product data:

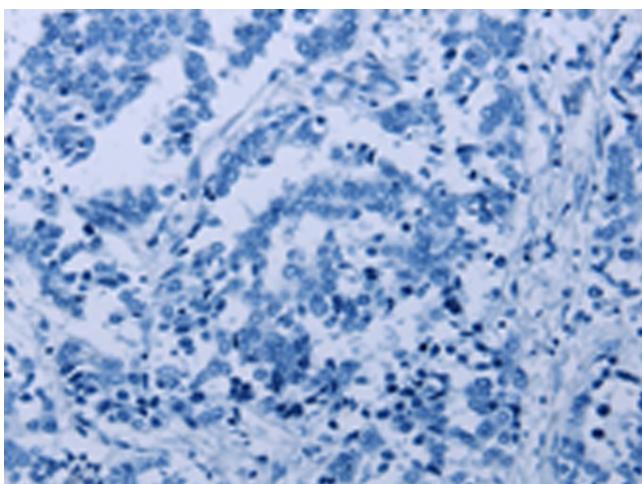
Product Type:	Primary Antibodies
Applications:	IHC
Recommended Dilution:	IHC: 25-100 Positive control: Human liver cancer Predicted cell location: Cytoplasm
Reactivity:	Human, Mouse
Host:	Rabbit
Isotype:	IgG
Clonality:	Polyclonal
Immunogen:	Synthetic peptide corresponding to a region derived from 339-353 amino acids of Human Apoptosis, caspase activation inhibitor
Formulation:	PBS pH7.3, 0.05% NaN <sub>3</sub> , 50% glycerol
Concentration:	lot specific
Purification:	Antigen affinity purification
Conjugation:	Unconjugated
Storage:	Store at -20°C as received.
Stability:	Stable for 12 months from date of receipt.
Predicted Protein Size:	39 kDa
Gene Name:	apoptosis and caspase activation inhibitor
Database Link:	<a href="#">NP_065104</a> <a href="#">Entrez Gene 74268 Mouse</a> <a href="#">Entrez Gene 57099 Human</a> <a href="#">Q9NQS1</a>
Background:	Aven binds to both Bcl-x(L) and the caspase regulator Apaf-1; which can supported that Bcl-x(L) inhibits cell death at a late (postmitochondrial) step in the death pathway. Identified in a yeast two-hybrid screen; Aven inhibited the proteolytic activation of caspases in a cell-free extract and suppressed apoptosis induced by Apaf-1 plus caspase-9. Expressing highly in the testis; ovary; and thymus.
Synonyms:	PDCD12



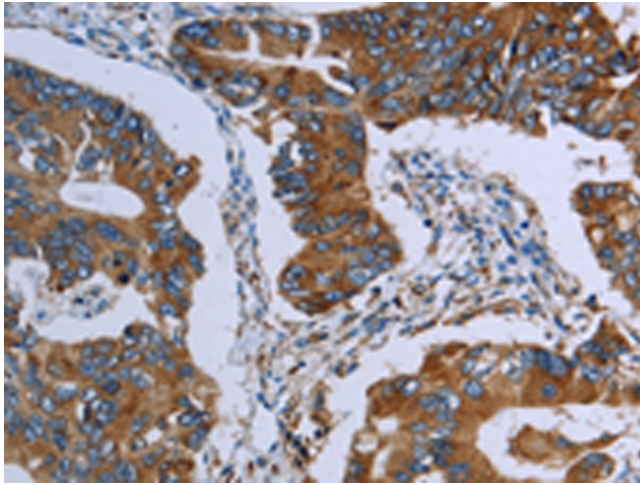
[View online »](#)

**Product images:**

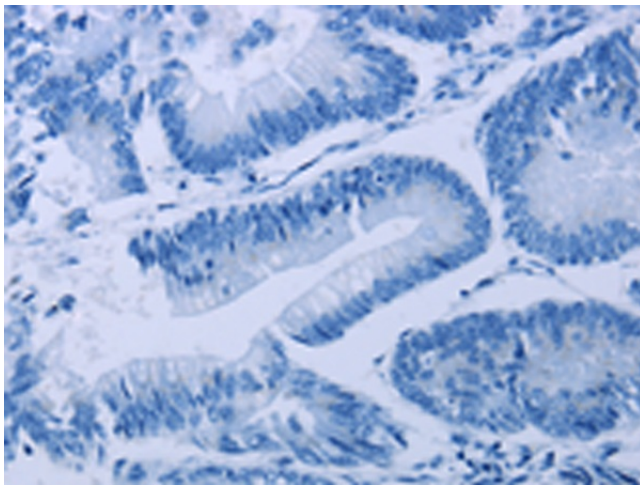
Immunohistochemistry of paraffin-embedded Human liver cancer tissue using TA322258 (AVEN Antibody) at dilution 1/20 (Original magnification:  $\times 200$ )



Immunohistochemistry of paraffin-embedded Human liver cancer tissue using TA322258 (AVEN Antibody) at dilution 1/20, treated with synthetic peptide. (Original magnification:  $\times 200$ )



Immunohistochemistry of paraffin-embedded Human colon cancer tissue using TA322258 (AVEN Antibody) at dilution 1/20 (Original magnification:  $\times 200$ )



Immunohistochemistry of paraffin-embedded Human colon cancer tissue using TA322258 (AVEN Antibody) at dilution 1/20, treated with synthetic peptide. (Original magnification:  $\times 200$ )