

## Product datasheet for **TA322257S**

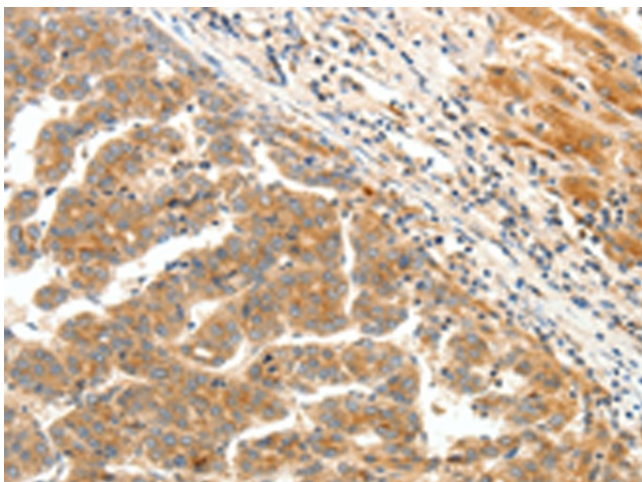
### GPR92 (LPAR5) Rabbit Polyclonal Antibody

#### Product data:

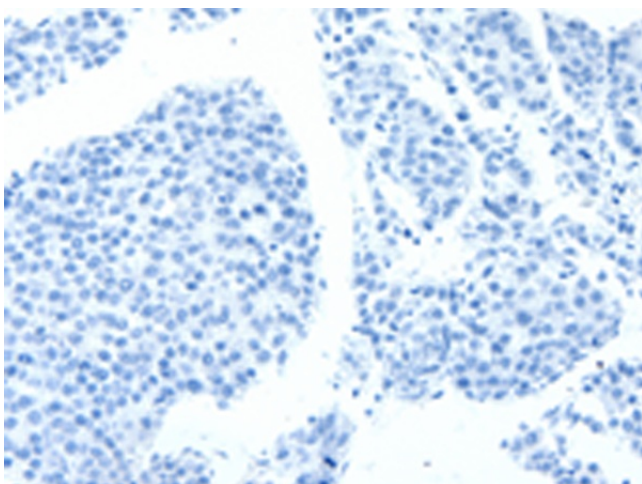
Product Type:	Primary Antibodies
Applications:	IHC
Recommended Dilution:	IHC: 25-100 Positive control: Human liver cancer Predicted cell location: Cytoplasm
Reactivity:	Human
Host:	Rabbit
Isotype:	IgG
Clonality:	Polyclonal
Immunogen:	Synthetic peptide corresponding to a region derived from 336-350 amino acids of human lysophosphatidic acid receptor 5
Formulation:	PBS pH7.3, 0.05% NaN <sub>3</sub> , 50% glycerol
Purification:	Antigen affinity purification
Conjugation:	Unconjugated
Storage:	Store at -20°C as received.
Stability:	Stable for 12 months from date of receipt.
Gene Name:	lysophosphatidic acid receptor 5
Database Link:	<a href="#">NP_065133</a> <a href="#">Entrez Gene 57121 Human</a> <a href="#">Q9H1C0</a>
Background:	This gene encodes a member of the rhodopsin class of G protein-coupled transmembrane receptors. This protein transmits extracellular signals from lysophosphatidic acid to cells through heterotrimeric G proteins and mediates numerous cellular processes. Many G protein receptors serve as targets for pharmaceutical drugs. Transcript variants of this gene have been described.
Synonyms:	GPR92; GPR93; KPG_010; LPA5
Protein Families:	Druggable Genome, GPCR, Transmembrane



[View online »](#)

**Product images:**

Immunohistochemistry of paraffin-embedded Human liver cancer tissue using [TA322257] (LPAR5 Antibody) at dilution 1/25 (Original magnification:  $\times 200$ )



Immunohistochemistry of paraffin-embedded Human liver cancer tissue using [TA322257] (LPAR5 Antibody) at dilution 1/25, treated with synthetic peptide. (Original magnification:  $\times 200$ )