

## Product datasheet for **TA322256**

### SPINLW1 (EPPIN) Rabbit Polyclonal Antibody

#### Product data:

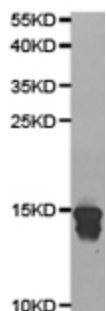
Product Type:	Primary Antibodies
Applications:	WB
Recommended Dilution:	WB: 1:500-2000
Reactivity:	Human, Mouse, Rat
Host:	Rabbit
Isotype:	IgG
Clonality:	Polyclonal
Immunogen:	Fusion protein corresponding to a region derived from 22-133 amino acids of human Epididymal protease inhibitor
Formulation:	PBS pH7.3, 0.05% NaN <sub>3</sub> , 50% glycerol
Concentration:	lot specific
Purification:	Antigen affinity purification
Conjugation:	Unconjugated
Storage:	Store at -20°C as received.
Stability:	Stable for 12 months from date of receipt.
Predicted Protein Size:	15 kDa
Gene Name:	epididymal peptidase inhibitor
Database Link:	<a href="#">NP_065131</a> <a href="#">Entrez Gene 75526 MouseEntrez Gene 685161 RatEntrez Gene 57119 Human O95925</a>
Background:	This gene encodes an epididymal protease inhibitor, which contains both kunitz-type and WAP-type four-disulfide core (WFDC) protease inhibitor consensus sequences. Most WFDC genes are localized to chromosome 20q12-q13 in two clusters: centromeric and telomeric. This gene is a member of the WFDC gene family and belongs to the telomeric cluster. The protein can inhibit human sperm motility, and polymorphisms in this gene are associated with male infertility. Read-through transcription also exists between this gene and the downstream WFDC6 (WAP four-disulfide core domain 6) gene.
Synonyms:	CT71; CT72; dj461P17.2; SPINLW1; WAP7; WFDC7



[View online »](#)

Protein Families: Secreted Protein

### Product images:



Predicted band size: 15 kDa. Positive control: Mouse testis tissue lysate. Recommended dilution: 1/500-2000. (Gel: 12%SDS-PAGE Lysate: 40 ug Primary antibody: 1/500 dilution Secondary antibody: Goat anti Rabbit IgG - H&L (HRP) at 1/10000 dilution Exposure time: 1 minute)