

## Product datasheet for TA322255S

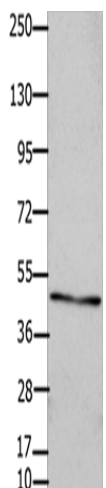
### GJC2 Rabbit Polyclonal Antibody

#### Product data:

Product Type:	Primary Antibodies
Applications:	WB
Recommended Dilution:	WB: 500-2000 WB positive control: OP9 cells
Reactivity:	Human, Mouse, Rat
Host:	Rabbit
Isotype:	IgG
Clonality:	Polyclonal
Immunogen:	Synthetic peptide corresponding to a region derived from 420-434 amino acids of Human gap junction protein, gamma 2, 47kDa
Formulation:	PBS pH7.3, 0.05% NaN <sub>3</sub> , 50% glycerol
Purification:	Antigen affinity purification
Conjugation:	Unconjugated
Storage:	Store at -20°C as received.
Stability:	Stable for 12 months from date of receipt.
Predicted Protein Size:	47 kDa
Gene Name:	gap junction protein gamma 2
Database Link:	<a href="#">NP_065168</a> <a href="#">Entrez Gene 118454 Mouse</a> <a href="#">Entrez Gene 497913 Rat</a> <a href="#">Entrez Gene 57165 Human</a> <a href="#">Q5T442</a>
Background:	This gene encodes a gap junction protein. Gap junction proteins are members of a large family of homologous connexins and comprise 4 transmembrane; 2 extracellular; and 3 cytoplasmic domains. This gene plays a key role in central myelination and is involved in peripheral myelination in humans. Defects in this gene are the cause of autosomal recessive Pelizaeus-Merzbacher-like disease-1.
Synonyms:	CX46.6; Cx47; GJA12; HLD2; LMPH1C; PMLDAR; SPG44
Protein Families:	Ion Channels: Other



[View online »](#)

**Product images:**

Gel: 10%SDS-PAGE

Lysate: 30  $\mu$ g

Lane: OP9 cells

Primary antibody: [TA322255] (GJC2 Antibody) at dilution 1/450

Secondary antibody: Goat anti rabbit IgG at 1/8000 dilution

Exposure time: 30 seconds