

Product datasheet for **TA322254**

GJC2 Rabbit Polyclonal Antibody

Product data:

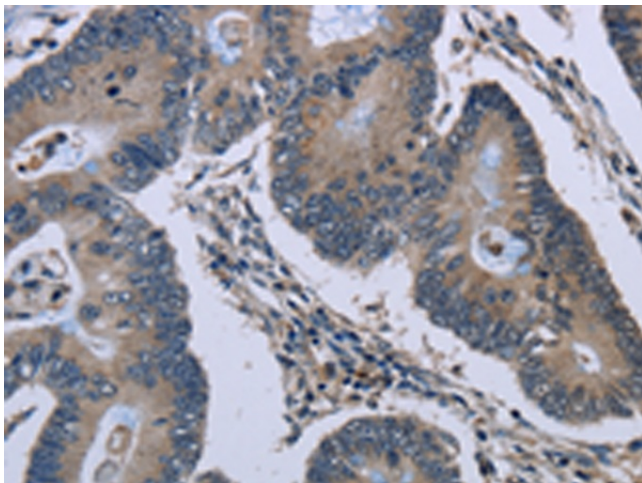
Product Type:	Primary Antibodies
Applications:	IHC
Recommended Dilution:	IHC: 50-200 Positive control: Human colon cancer Predicted cell location: Cytoplasm
Reactivity:	Human, Mouse, Rat
Host:	Rabbit
Isotype:	IgG
Clonality:	Polyclonal
Immunogen:	Synthetic peptide corresponding to a region derived from 420-434 amino acids of Human gap junction protein, gamma 2, 47kDa
Formulation:	PBS pH7.3, 0.05% NaN ₃ , 50% glycerol
Concentration:	lot specific
Purification:	Antigen affinity purification
Conjugation:	Unconjugated
Storage:	Store at -20°C as received.
Stability:	Stable for 12 months from date of receipt.
Predicted Protein Size:	47 kDa
Gene Name:	gap junction protein gamma 2
Database Link:	NP_065168 Entrez Gene 118454 Mouse Entrez Gene 497913 Rat Entrez Gene 57165 Human Q5T442
Background:	This gene encodes a gap junction protein. Gap junction proteins are members of a large family of homologous connexins and comprise 4 transmembrane; 2 extracellular; and 3 cytoplasmic domains. This gene plays a key role in central myelination and is involved in peripheral myelination in humans. Defects in this gene are the cause of autosomal recessive Pelizaeus-Merzbacher-like disease-1.
Synonyms:	CX46.6; Cx47; GJA12; HLD2; LMPH1C; PMLDAR; SPG44



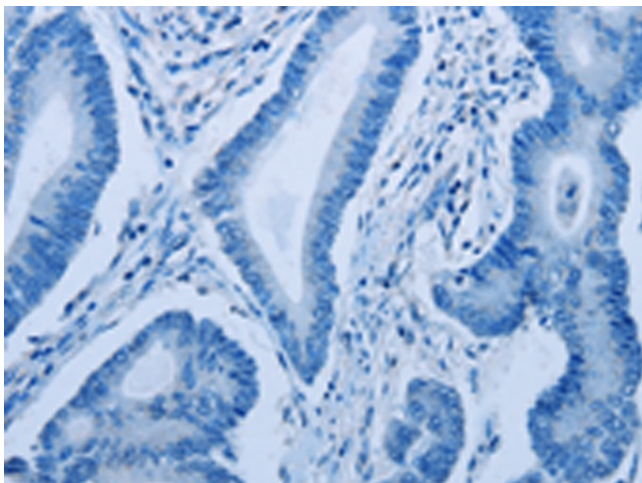
[View online »](#)

Protein Families: Ion Channels: Other

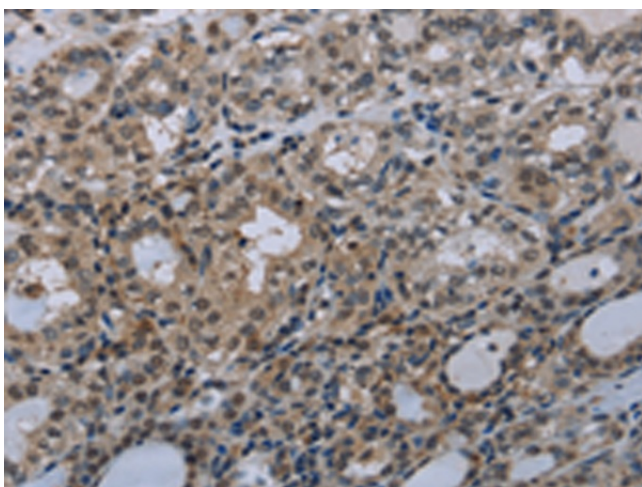
Product images:



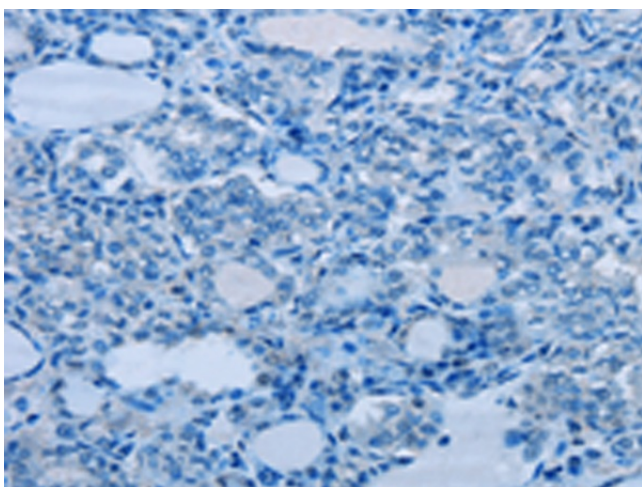
Immunohistochemistry of paraffin-embedded Human colon cancer tissue using TA322254 (GJC2 Antibody) at dilution 1/40 (Original magnification: ×200)



Immunohistochemistry of paraffin-embedded Human colon cancer tissue using TA322254 (GJC2 Antibody) at dilution 1/40, treated with synthetic peptide. (Original magnification: ×200)



Immunohistochemistry of paraffin-embedded Human thyroid cancer tissue using TA322254 (GJC2 Antibody) at dilution 1/40 (Original magnification: $\times 200$)



Immunohistochemistry of paraffin-embedded Human thyroid cancer tissue using TA322254 (GJC2 Antibody) at dilution 1/40, treated with synthetic peptide. (Original magnification: $\times 200$)