

Product datasheet for **TA322253**

IKB alpha (NFKBIA) Rabbit Polyclonal Antibody

Product data:

Product Type:	Primary Antibodies
Applications:	IF, IHC, WB
Recommended Dilution:	WB: 1:500-1000, IHC: 1:50-100, IF: 1:100-200
Reactivity:	Human, Mouse, Rat
Modifications:	Phospho-specific
Host:	Rabbit
Isotype:	IgG
Clonality:	Polyclonal
Immunogen:	Peptide sequence around phosphorylation site of serine 32/36 (H-D-S(p)-G-L-D-S(p)-M-K) derived from Human I κ B- α .
Formulation:	PBS pH7.3, 0.05% NaN ₃ , 50% glycerol
Concentration:	lot specific
Purification:	Antigen affinity purification
Conjugation:	Unconjugated
Storage:	Store at -20°C as received.
Stability:	Stable for 12 months from date of receipt.
Predicted Protein Size:	39 kDa
Gene Name:	NFKB inhibitor alpha
Database Link:	NP_065390 Entrez Gene 18035 Mouse Entrez Gene 25493 Rat Entrez Gene 4792 Human P25963
Background:	Inhibits the activity of dimeric NF-kappa-B/REL complexes by trapping REL dimers in the cytoplasm through masking of their nuclear localization signals. On cellular stimulation by immune and proinflammatory responses, becomes phosphorylated promoting ubiquitination and degradation, enabling the dimeric RELA to translocate to the nucleus and activate transcription.
Synonyms:	IKBA; MAD-3; NFKBI

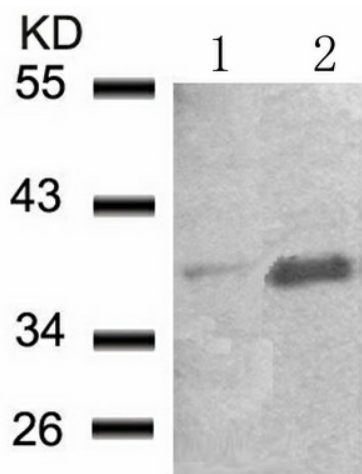


[View online »](#)

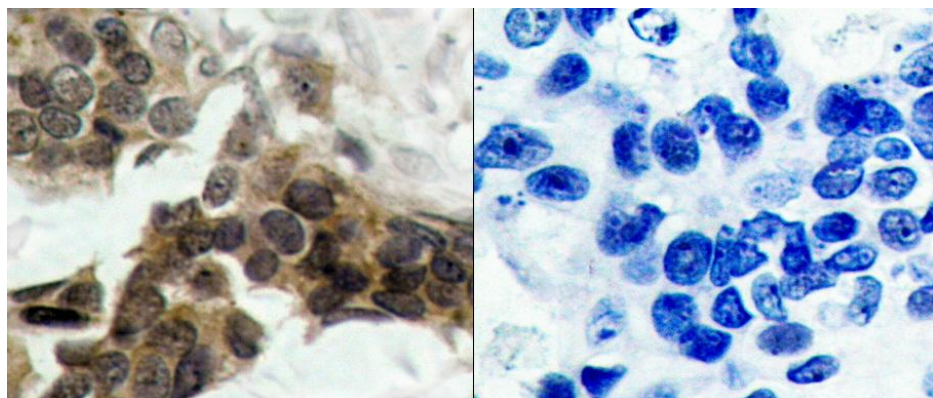
Protein Families: Druggable Genome

Protein Pathways: Adipocytokine signaling pathway, Apoptosis, B cell receptor signaling pathway, Chemokine signaling pathway, Chronic myeloid leukemia, Cytosolic DNA-sensing pathway, Epithelial cell signaling in Helicobacter pylori infection, Neurotrophin signaling pathway, NOD-like receptor signaling pathway, Pathways in cancer, Prostate cancer, RIG-I-like receptor signaling pathway, Small cell lung cancer, T cell receptor signaling pathway, Toll-like receptor signaling pathway

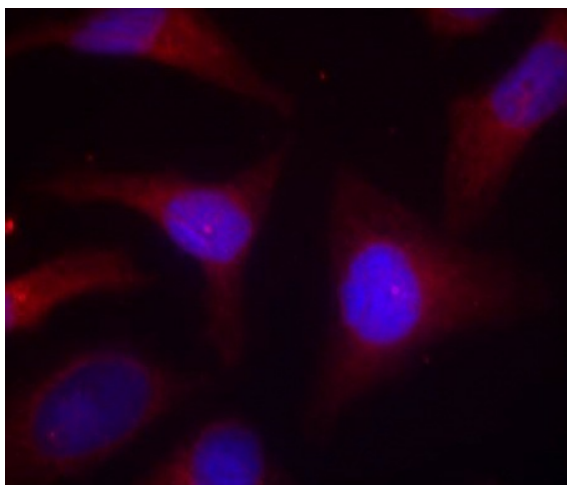
Product images:



Predicted band size: 39 kDa. Positive control: Hela cells untreated or treated with TNF lysate. Recommended dilution: 1/ 500-1000. (Gel: 10%SDS-PAGE Lane 1: Hela cells untreated with TNF lysat Lane 2: Hela cells treated with TNF lysate Lysates: 30 ug per lane Primary antibody: 1/500 dilution Secondary antibody: Goat anti Rabbit IgG - H&L (HRP) at 1/10000 dilution Exposure time: 1 minute)



Predicted cell location: Cytoplasm; Nucleus. Positive control: Human breast carcinoma tissue. Recommended dilution: 1/ 50-100 The image on the left is immunohistochemistry of paraffin-embedded human breast carcinoma tissue using NFKBIA (Phospho-Ser32/Ser36) antibody at dilution 1/50, on the right is treated with the synthetic peptide. (Original magnification:x200)



Predicted cell location: Cytoplasm; Nucleus.
Positive control: HeLa cells. Recommended dilution: 1/ 100-200. The image is immunofluorescence of methanol-fixed HeLa cells using NFKBIA (Phospho-Ser32/Ser36) antibody at dilution 1/100. (Original magnification: ×200)