

Product datasheet for **TA322252**

IKB alpha (NFKBIA) Rabbit Polyclonal Antibody

Product data:

Product Type:	Primary Antibodies
Applications:	IHC, WB
Recommended Dilution:	ELISA: 1:1000-2000, WB: 1:200-1000, IHC: 1:15-50
Reactivity:	Human, Mouse, Rat
Host:	Rabbit
Isotype:	IgG
Clonality:	Polyclonal
Immunogen:	Fusion protein corresponding to a region derived from 1-317 amino acids of human nuclear factor of kappa light polypeptide gene enhancer in B-cells inhibitor, alpha
Formulation:	PBS pH7.3, 0.05% NaN ₃ , 50% glycerol
Concentration:	lot specific
Purification:	Antigen affinity purification
Conjugation:	Unconjugated
Storage:	Store at -20°C as received.
Stability:	Stable for 12 months from date of receipt.
Predicted Protein Size:	36 kDa
Gene Name:	NFKB inhibitor alpha
Database Link:	NP_065390 Entrez Gene 18035 Mouse Entrez Gene 25493 Rat Entrez Gene 4792 Human P25963
Background:	This gene encodes a member of the NF-kappa-B inhibitor family, which contain multiple ankrin repeat domains. The encoded protein interacts with REL dimers to inhibit NF-kappa-B/REL complexes which are involved in inflammatory responses. The encoded protein moves between the cytoplasm and the nucleus via a nuclear localization signal and CRM1-mediated nuclear export. Mutations in this gene have been found in ectodermal dysplasia anhidrotic with T-cell immunodeficiency autosomal dominant disease.?
Synonyms:	IKBA; MAD-3; NFKBI

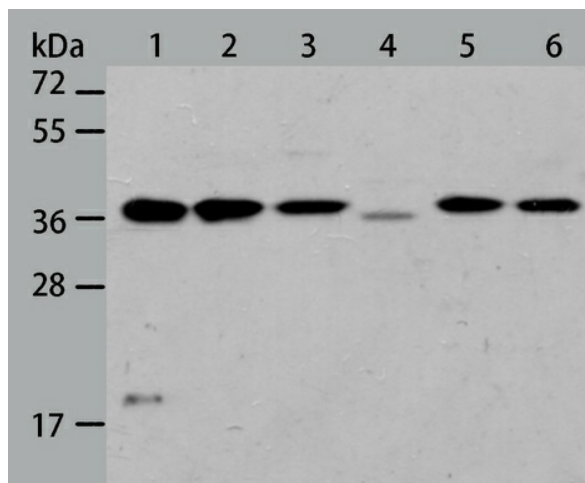


[View online »](#)

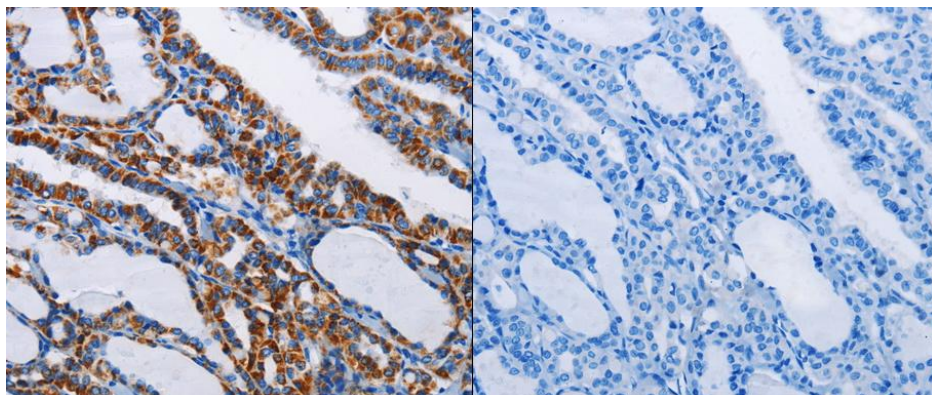
Protein Families: Druggable Genome

Protein Pathways: Adipocytokine signaling pathway, Apoptosis, B cell receptor signaling pathway, Chemokine signaling pathway, Chronic myeloid leukemia, Cytosolic DNA-sensing pathway, Epithelial cell signaling in Helicobacter pylori infection, Neurotrophin signaling pathway, NOD-like receptor signaling pathway, Pathways in cancer, Prostate cancer, RIG-I-like receptor signaling pathway, Small cell lung cancer, T cell receptor signaling pathway, Toll-like receptor signaling pathway

Product images:



Predicted band size: 36kDa. Positive control: HeLa, Jurkat, 293T, NIH/3T3, K562 and A172 cell lysate. Recommended dilution: 1/200-1000. (Gel: 10%SDS-PAGE Lane 1-6:HeLa, Jurkat, 293T, NIH/3T3, K562 and A172 cell lysate Lysates: 40 ug per lane Primary antibody: 1/100 dilution Secondary antibody: Goat anti Rabbit IgG - H&L (HRP) at 1/8000 dilution Exposure time: 30 seconds)



Predicted cell location: Cytoplasm. Positive control: Human thyroid cancer tissue. Recommended dilution: 1/15-50 The image on the left is immunohistochemistry of paraffin-embedded human thyroid cancer tissue using NFKBIA antibody at dilution 1/15, on the right is treated with the fusion protein. (Original magnification:x200)