

## Product datasheet for **TA322251**

### GJD2 Rabbit Polyclonal Antibody

#### Product data:

Product Type:	Primary Antibodies
Applications:	IHC, WB
Recommended Dilution:	WB: 500-2000 WB positive control: Mouse brain tissue lysate IHC: 50-200 Positive control: Human liver cancer Predicted cell location: Cytoplasm
Reactivity:	Human, Mouse, Rat
Host:	Rabbit
Isotype:	IgG
Clonality:	Polyclonal
Immunogen:	Synthetic peptide corresponding to a region derived from 157-175 amino acids of Human gap junction protein, delta 2, 36kDa
Formulation:	PBS pH7.3, 0.05% NaN <sub>3</sub> , 50% glycerol
Concentration:	lot specific
Purification:	Antigen affinity purification
Conjugation:	Unconjugated
Storage:	Store at -20°C as received.
Stability:	Stable for 12 months from date of receipt.
Predicted Protein Size:	36 kDa
Gene Name:	gap junction protein delta 2
Database Link:	<a href="#">NP_065711</a> <a href="#">Entrez Gene 14617 Mouse</a> <a href="#">Entrez Gene 50564 Rat</a> <a href="#">Entrez Gene 57369 Human</a> <a href="#">Q9UKL4</a>



[View online »](#)

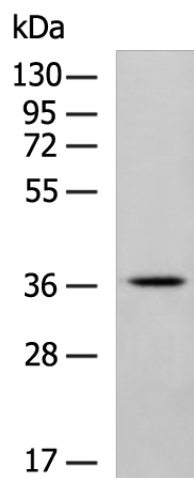
**Background:** This gene encodes a member of the connexin protein family. Connexins are gap junction proteins which are arranged in groups of 6 around a central pore to form a connexon; a component of the gap junction intercellular channel. The channels formed by this protein allow cationic molecule exchange between human beta cells and may function in the regulation of insulin secretion.

**Synonyms:** CX36; GJA9

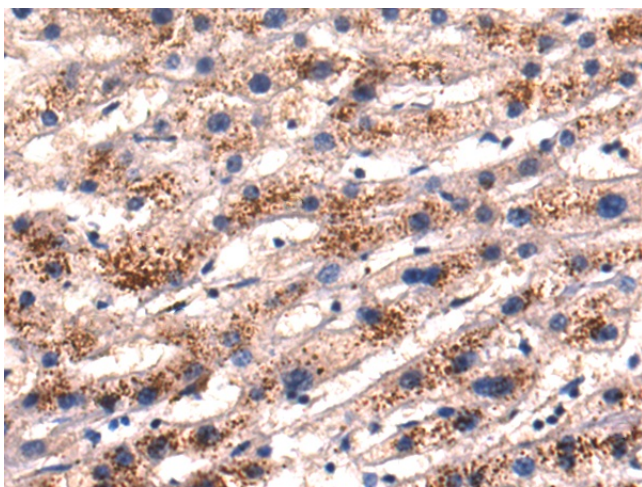
**Protein Families:** Ion Channels: Other, Transmembrane

**Protein Pathways:** Gap junction

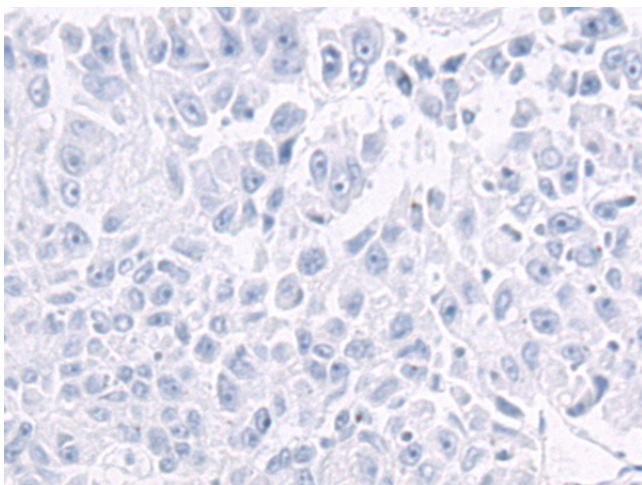
### Product images:



Gel: 8%SDS-PAGE  
Lysate: 40 µg  
Lane: Mouse brain tissue lysate  
Primary antibody: TA322251 (GJD2 Antibody) at dilution 1/600  
Secondary antibody: Goat anti rabbit IgG at 1/5000 dilution  
Exposure time: 2 minutes



Immunohistochemistry of paraffin-embedded Human liver cancer tissue using TA322251 (GJD2 Antibody) at dilution 1/50 (Original magnification: ×200)



Immunohistochemistry of paraffin-embedded Human liver cancer tissue using TA322251 (GJD2 Antibody) at dilution 1/50, treated with synthetic peptide. (Original magnification:  $\times 200$ )