

Product datasheet for **TA322247**

PCDHB16 Rabbit Polyclonal Antibody

Product data:

Product Type:	Primary Antibodies
Applications:	IHC
Recommended Dilution:	IHC: 25-100 Positive control: Human brain Predicted cell location: Cytoplasm
Reactivity:	Human
Host:	Rabbit
Isotype:	IgG
Clonality:	Polyclonal
Immunogen:	Fusion protein corresponding to a region derived from 29-300 amino acids of human protocadherin beta 16
Formulation:	PBS pH7.3, 0.05% NaN ₃ , 50% glycerol
Concentration:	lot specific
Purification:	Antigen affinity purification
Conjugation:	Unconjugated
Storage:	Store at -20°C as received.
Stability:	Stable for 12 months from date of receipt.
Gene Name:	protocadherin beta 16
Database Link:	NP_066008 Entrez Gene 57717 Human Q9NRJ7



[View online »](#)

Background:

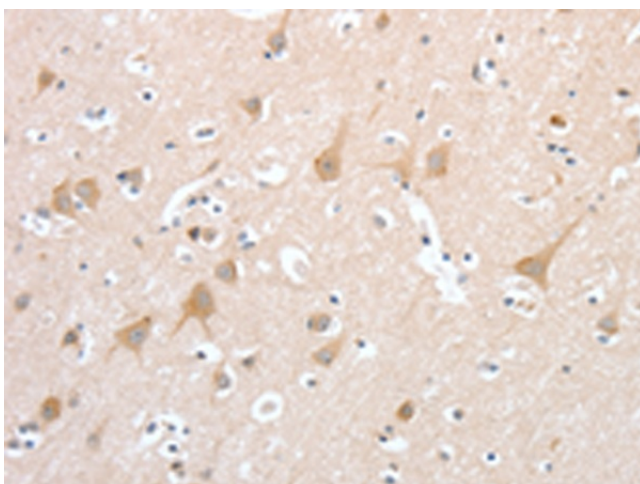
This gene is a member of the protocadherin beta gene cluster; one of three related gene clusters tandemly linked on chromosome five. The gene clusters demonstrate an unusual genomic organization similar to that of B-cell and T-cell receptor gene clusters. The beta cluster contains 16 genes and 3 pseudogenes; each encoding 6 extracellular cadherin domains and a cytoplasmic tail that deviates from others in the cadherin superfamily. The extracellular domains interact in a homophilic manner to specify differential cell-cell connections. Unlike the alpha and gamma clusters; the transcripts from these genes are made up of only one large exon; not sharing common 3' exons as expected. These neural cadherin-like cell adhesion proteins are integral plasma membrane proteins. Their specific functions are unknown but they most likely play a critical role in the establishment and function of specific cell-cell neural connections.

Synonyms:

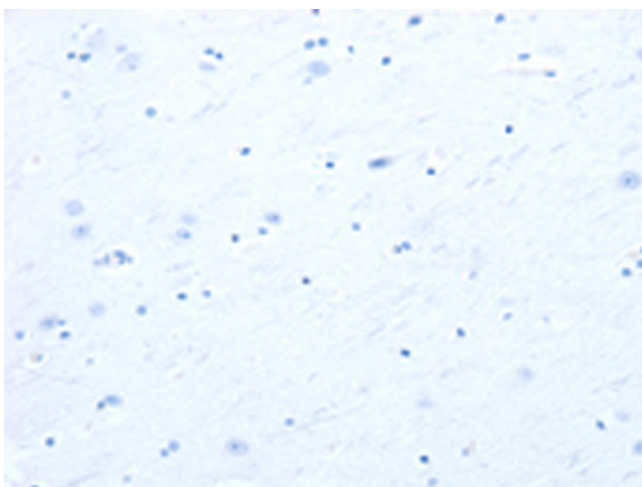
ME1; PCDH-BETA16; PCDH3X; PCDHB8a

Protein Families:

Druggable Genome, Transmembrane

Product images:

Immunohistochemistry of paraffin-embedded Human brain tissue using TA322247 (PCDHB16 Antibody) at dilution 1/30 (Original magnification: ×200)



Immunohistochemistry of paraffin-embedded Human brain tissue using TA322247 (PCDHB16 Antibody) at dilution 1/30, treated with fusion protein. (Original magnification: $\times 200$)