

Product datasheet for **TA322246S**

CBX8 Rabbit Polyclonal Antibody

Product data:

Product Type:	Primary Antibodies
Applications:	IHC, WB
Recommended Dilution:	WB: 500-2000 WB positive control: 293T and 231 cell lysates IHC: 50-200 Positive control: Human cervical cancer Predicted cell location: Nucleus
Reactivity:	Human
Host:	Rabbit
Isotype:	IgG
Clonality:	Polyclonal
Immunogen:	Fusion protein corresponding to a C terminal 300 amino acids of human chromobox homolog 8
Formulation:	PBS pH7.3, 0.05% NaN ₃ , 50% glycerol
Purification:	Antigen affinity purification
Conjugation:	Unconjugated
Storage:	Store at -20°C as received.
Stability:	Stable for 12 months from date of receipt.
Predicted Protein Size:	43 kDa
Gene Name:	chromobox 8
Database Link:	NP_065700 Entrez Gene 57332 Human Q9HC52



[View online »](#)

Background:

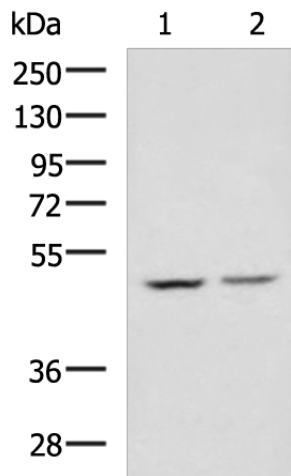
Chromobox protein homolog 8 is a protein that in humans is encoded by the CBX8 gene. CBX8 has been shown to interact with RING1 and MLLT1. Component of a Polycomb group (PcG) multiprotein PRC1-like complex; a complex class required to maintain the transcriptionally repressive state of many genes; including Hox genes; throughout development. PcG PRC1 complex acts via chromatin remodeling and modification of histones; it mediates monoubiquitination of histone H2A 'Lys-119'; rendering chromatin heritably changed in its expressibility.

Synonyms:

PC3; RC1

Protein Families:

Transcription Factors

Product images:

Gel: 8%SDS-PAGE

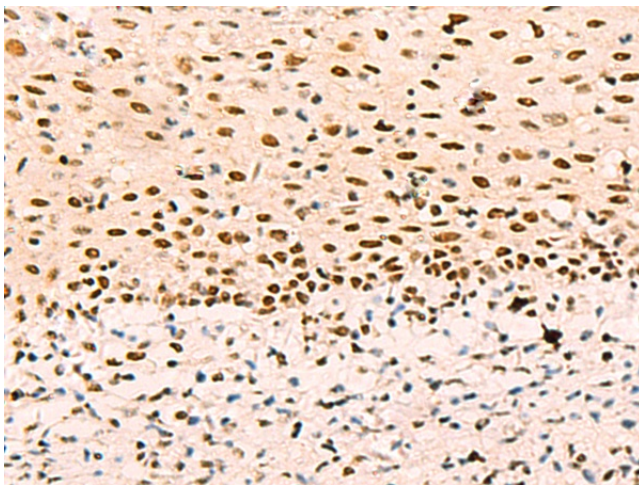
Lysate: 40 µg

Lane 1-2: 293T and 231 cell lysates

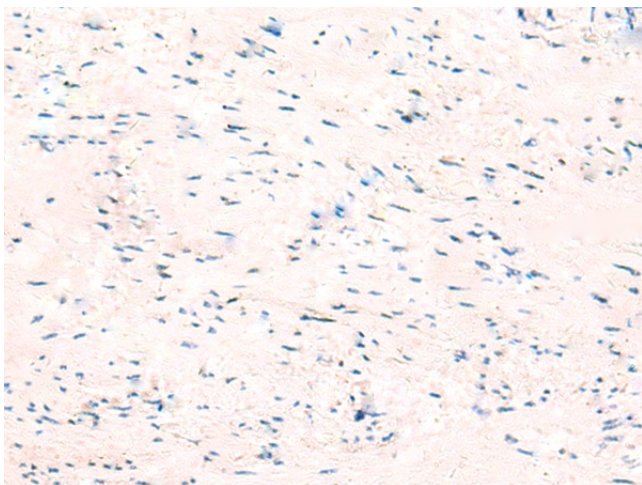
Primary antibody: [TA322246] (CBX8 Antibody) at dilution 1/950

Secondary antibody: Goat anti rabbit IgG at 1/5000 dilution

Exposure time: 5 seconds



Immunohistochemistry of paraffin-embedded Human cervical cancer tissue using [TA322246] (CBX8 Antibody) at dilution 1/65 (Original magnification: ×200)



Immunohistochemistry of paraffin-embedded Human cervical cancer tissue using [TA322246] (CBX8 Antibody) at dilution 1/65, treated with fusion protein. (Original magnification: ×200)