

## Product datasheet for **TA322245**

### CBX8 Rabbit Polyclonal Antibody

#### Product data:

Product Type:	Primary Antibodies
Applications:	IHC, WB
Recommended Dilution:	WB: 500-2000 WB positive control: 231 and 293T cell lysates IHC: 50-100 Positive control: Human liver cancer Predicted cell location: Nucleus and Cytoplasm
Reactivity:	Human
Host:	Rabbit
Isotype:	IgG
Clonality:	Polyclonal
Immunogen:	Fusion protein corresponding to a C terminal 300 amino acids of human chromobox homolog 8
Formulation:	PBS pH7.3, 0.05% NaN <sub>3</sub> , 50% glycerol
Concentration:	lot specific
Purification:	Antigen affinity purification
Conjugation:	Unconjugated
Storage:	Store at -20°C as received.
Stability:	Stable for 12 months from date of receipt.
Predicted Protein Size:	43 kDa
Gene Name:	chromobox 8
Database Link:	<a href="#">NP_065700</a> <a href="#">Entrez Gene 57332 Human</a> <a href="#">Q9HC52</a>



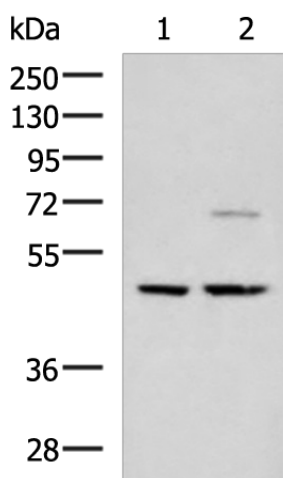
[View online »](#)

**Background:** Chromobox protein homolog 8 is a protein that in humans is encoded by the CBX8 gene. CBX8 has been shown to interact with RING1 and MLLT1. Component of a Polycomb group (PcG) multiprotein PRC1-like complex; a complex class required to maintain the transcriptionally repressive state of many genes; including Hox genes; throughout development. PcG PRC1 complex acts via chromatin remodeling and modification of histones; it mediates monoubiquitination of histone H2A 'Lys-119'; rendering chromatin heritably changed in its expressibility.

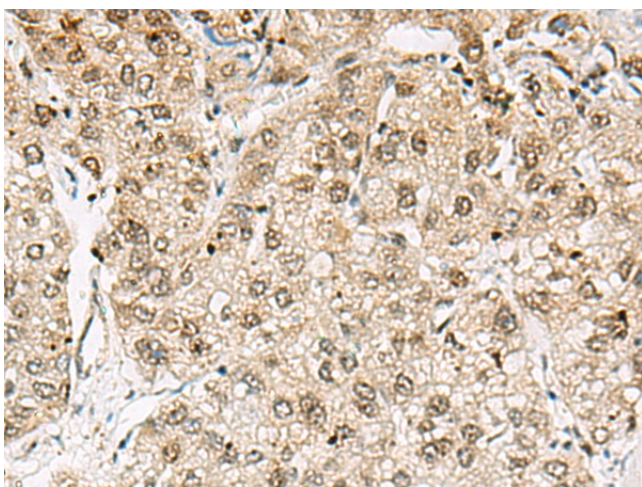
**Synonyms:** PC3; RC1

**Protein Families:** Transcription Factors

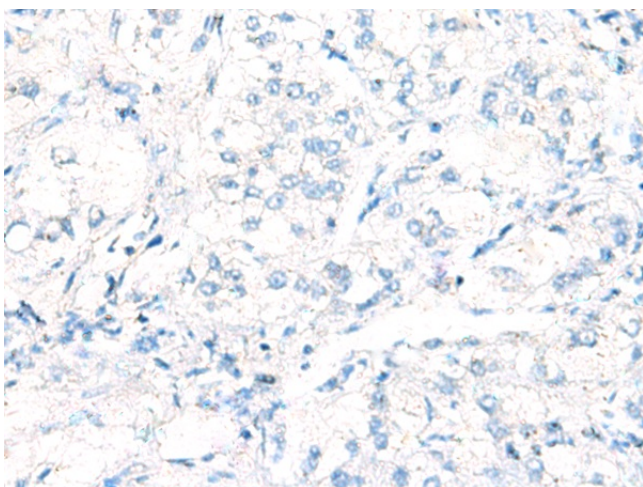
### Product images:



Gel: 8%SDS-PAGE  
Lysate: 40  $\mu$ g  
Lane 1-2: 231 and 293T cell lysates  
Primary antibody: TA322245 (CBX8 Antibody) at dilution 1/650  
Secondary antibody: Goat anti rabbit IgG at 1/5000 dilution  
Exposure time: 5 seconds



Immunohistochemistry of paraffin-embedded Human liver cancer tissue using TA322245 (CBX8 Antibody) at dilution 1/45 (Original magnification:  $\times$ 200)



Immunohistochemistry of paraffin-embedded Human liver cancer tissue using TA322245 (CBX8 Antibody) at dilution 1/45, treated with fusion protein. (Original magnification: x200)