

## Product datasheet for **TA322238S**

### HCN1 Rabbit Polyclonal Antibody

#### Product data:

Product Type:	Primary Antibodies
Applications:	IHC, WB
Recommended Dilution:	WB: 500-2000 WB positive control: Hela cells IHC: 25-100 Positive control: Human thyroid cancer Predicted cell location: Cytoplasm
Reactivity:	Human, Mouse, Rat
Host:	Rabbit
Isotype:	IgG
Clonality:	Polyclonal
Immunogen:	Synthetic peptide corresponding to a region derived from 874-886 amino acids of Human hyperpolarization activated cyclic nucleotide-gated potassium channel 1
Formulation:	PBS pH7.3, 0.05% NaN <sub>3</sub> , 50% glycerol
Purification:	Antigen affinity purification
Conjugation:	Unconjugated
Storage:	Store at -20°C as received.
Stability:	Stable for 12 months from date of receipt.
Predicted Protein Size:	99 kDa
Gene Name:	hyperpolarization activated cyclic nucleotide gated potassium channel 1
Database Link:	<a href="#">NP_066550</a> <a href="#">Entrez Gene 15165 Mouse</a> <a href="#">Entrez Gene 84390 Rat</a> <a href="#">Entrez Gene 348980 Human</a> <a href="#">O60741</a>
Background:	The membrane protein encoded by this gene is a hyperpolarization-activated cation channel that contributes to the native pacemaker currents in heart and neurons. The encoded protein can homodimerize or heterodimerize with other pore-forming subunits to form a potassium channel. This channel may act as a receptor for sour tastes.
Synonyms:	BCNG-1; BCNG1; EIEE24; HAC-2



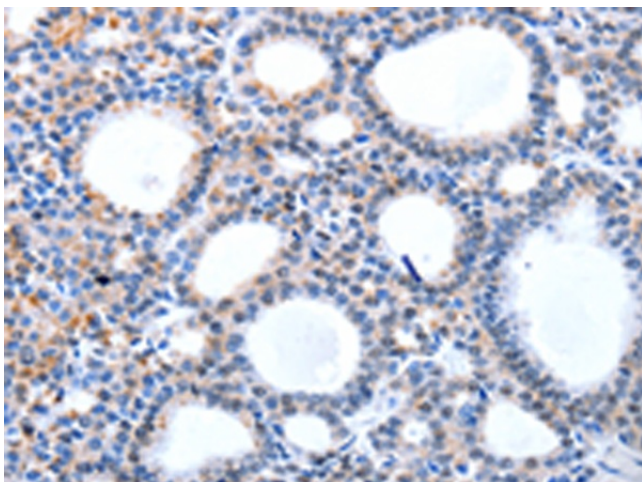
[View online »](#)

Protein Families: Druggable Genome, Ion Channels: Cyclic nucleotide gated, Transmembrane

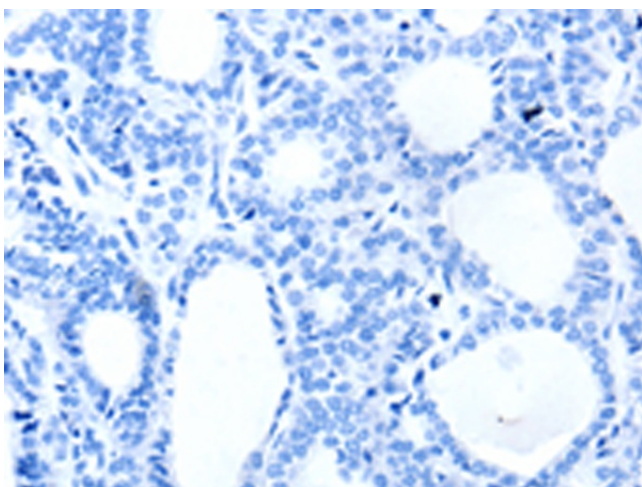
### Product images:



Gel: 8%SDS-PAGE  
Lysate: 40  $\mu$ g  
Lane: HeLa cells  
Primary antibody: [TA322238] (HCN1 Antibody) at dilution 1/950  
Secondary antibody: Goat anti rabbit IgG at 1/8000 dilution  
Exposure time: 10 seconds



Immunohistochemistry of paraffin-embedded Human thyroid cancer tissue using [TA322238] (HCN1 Antibody) at dilution 1/50 (Original magnification:  $\times$ 200)



Immunohistochemistry of paraffin-embedded Human thyroid cancer tissue using [TA322238] (HCN1 Antibody) at dilution 1/50, treated with synthetic peptide. (Original magnification:  $\times 200$ )