

Product datasheet for **TA322238**

HCN1 Rabbit Polyclonal Antibody

Product data:

Product Type:	Primary Antibodies
Applications:	IHC, WB
Recommended Dilution:	WB: 500-2000 WB positive control: Hela cells IHC: 25-100 Positive control: Human thyroid cancer Predicted cell location: Cytoplasm
Reactivity:	Human, Mouse, Rat
Host:	Rabbit
Isotype:	IgG
Clonality:	Polyclonal
Immunogen:	Synthetic peptide corresponding to a region derived from 874-886 amino acids of Human hyperpolarization activated cyclic nucleotide-gated potassium channel 1
Formulation:	PBS pH7.3, 0.05% NaN ₃ , 50% glycerol
Concentration:	lot specific
Purification:	Antigen affinity purification
Conjugation:	Unconjugated
Storage:	Store at -20°C as received.
Stability:	Stable for 12 months from date of receipt.
Predicted Protein Size:	99 kDa
Gene Name:	hyperpolarization activated cyclic nucleotide gated potassium channel 1
Database Link:	NP_066550 Entrez Gene 15165 Mouse Entrez Gene 84390 Rat Entrez Gene 348980 Human O60741
Background:	The membrane protein encoded by this gene is a hyperpolarization-activated cation channel that contributes to the native pacemaker currents in heart and neurons. The encoded protein can homodimerize or heterodimerize with other pore-forming subunits to form a potassium channel. This channel may act as a receptor for sour tastes.

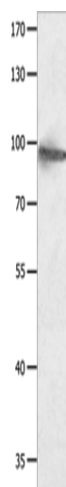


[View online »](#)

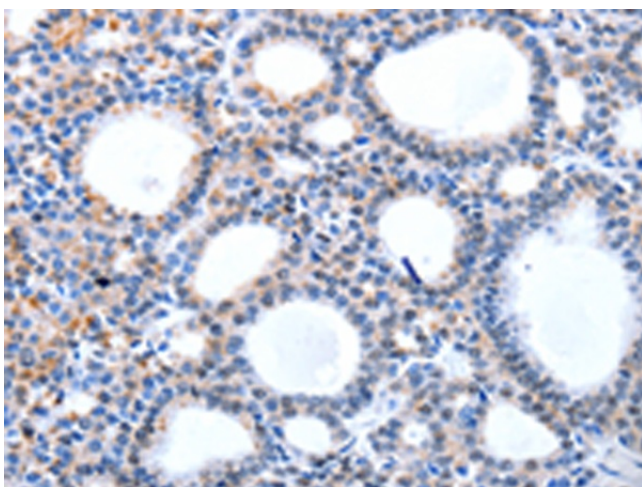
Synonyms: BCNG-1; BCNG1; EIEE24; HAC-2

Protein Families: Druggable Genome, Ion Channels: Cyclic nucleotide gated, Transmembrane

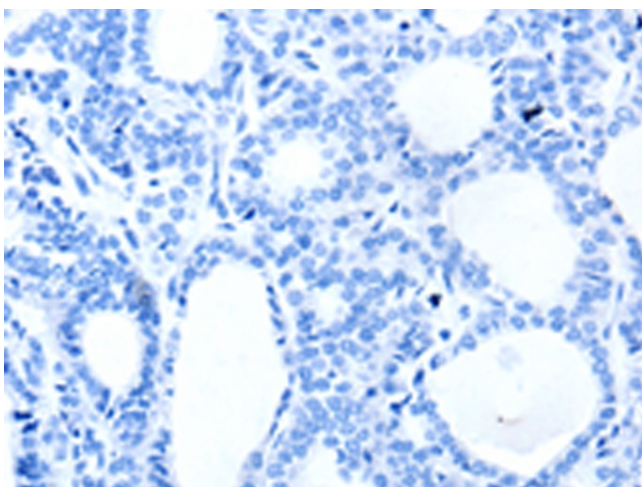
Product images:



Gel: 8%SDS-PAGE
Lysate: 40 μ g
Lane: HeLa cells
Primary antibody: TA322238 (HCN1 Antibody) at dilution 1/950
Secondary antibody: Goat anti rabbit IgG at 1/8000 dilution
Exposure time: 10 seconds



Immunohistochemistry of paraffin-embedded Human thyroid cancer tissue using TA322238 (HCN1 Antibody) at dilution 1/50 (Original magnification: \times 200)



Immunohistochemistry of paraffin-embedded Human thyroid cancer tissue using TA322238 (HCN1 Antibody) at dilution 1/50, treated with synthetic peptide. (Original magnification: $\times 200$)