

## Product datasheet for **TA322234**

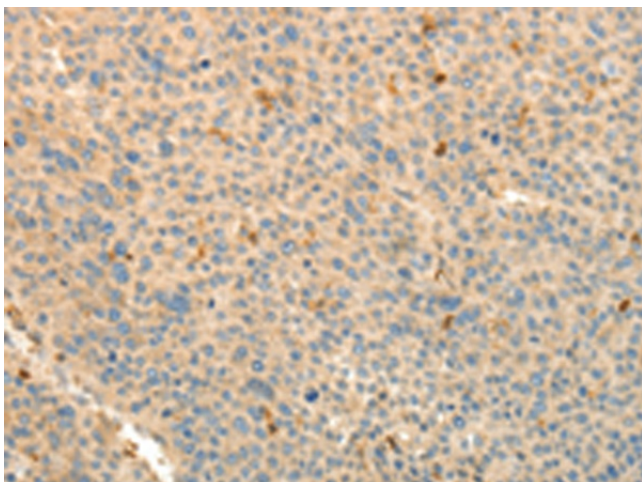
### Thymosin beta 4 (TMSB4X) Rabbit Polyclonal Antibody

#### Product data:

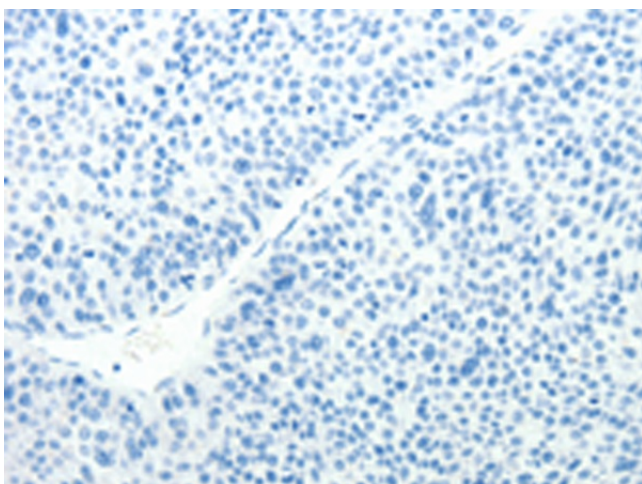
Product Type:	Primary Antibodies
Applications:	IHC
Recommended Dilution:	IHC: 25-100 Positive control: Human liver cancer Predicted cell location: Cytoplasm
Reactivity:	Human, Mouse, Rat
Host:	Rabbit
Isotype:	IgG
Clonality:	Polyclonal
Immunogen:	Synthetic peptide corresponding to a region derived from 2-15 amino acids of human thymosin beta 4, X-linked
Formulation:	PBS pH7.3, 0.05% NaN <sub>3</sub> , 50% glycerol
Concentration:	lot specific
Purification:	Antigen affinity purification
Conjugation:	Unconjugated
Storage:	Store at -20°C as received.
Stability:	Stable for 12 months from date of receipt.
Gene Name:	thymosin beta 4, X-linked
Database Link:	<a href="#">NP_066932</a> <a href="#">Entrez Gene 19241 Mouse</a> <a href="#">Entrez Gene 81814 Rat</a> <a href="#">Entrez Gene 7114 Human</a> <a href="#">P62328</a>
Background:	This gene encodes an actin sequestering protein which plays a role in regulation of actin polymerization. The protein is also involved in cell proliferation; migration; and differentiation. This gene escapes X inactivation and has a homolog on chromosome Y.
Synonyms:	FX; PTMB4; TB4X; TMSB4
Protein Pathways:	Regulation of actin cytoskeleton



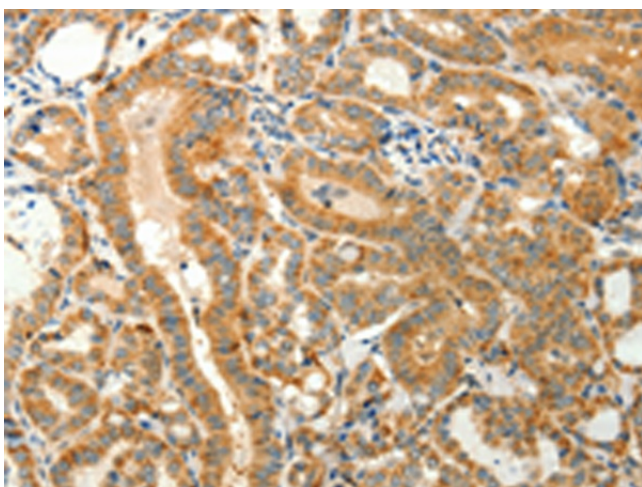
[View online »](#)

**Product images:**

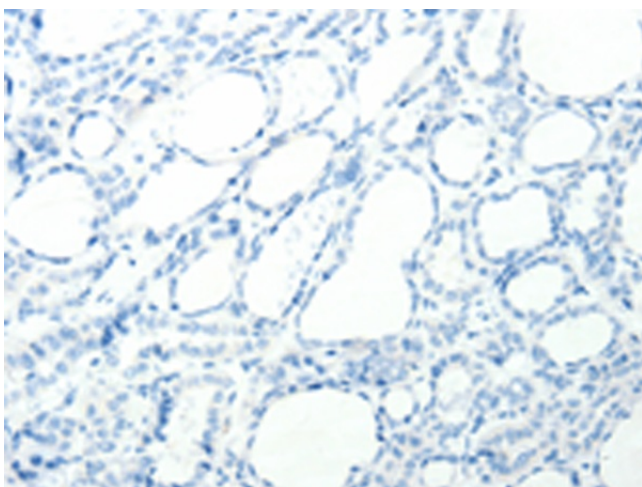
Immunohistochemistry of paraffin-embedded Human liver cancer tissue using TA322234 (TMSB4X Antibody) at dilution 1/30 (Original magnification:  $\times 200$ )



Immunohistochemistry of paraffin-embedded Human liver cancer tissue using TA322234 (TMSB4X Antibody) at dilution 1/30, treated with synthetic peptide. (Original magnification:  $\times 200$ )



Immunohistochemistry of paraffin-embedded Human thyroid cancer tissue using TA322234 (TMSB4X Antibody) at dilution 1/30 (Original magnification:  $\times 200$ )



Immunohistochemistry of paraffin-embedded Human thyroid cancer tissue using TA322234 (TMSB4X Antibody) at dilution 1/30, treated with synthetic peptide. (Original magnification:  $\times 200$ )