

Product datasheet for **TA322227**

Myozenin 1 (MYOZ1) Rabbit Polyclonal Antibody

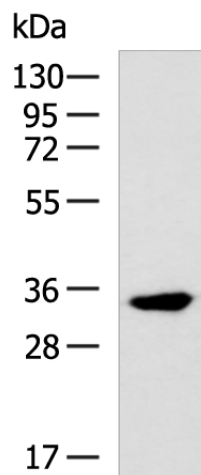
Product data:

Product Type:	Primary Antibodies
Applications:	IHC, WB
Recommended Dilution:	WB: 1000-5000 WB positive control: Mouse skeletal muscle tissue lysate IHC: 150-300 Positive control: Human breast cancer Predicted cell location: Cytoplasm
Reactivity:	Human, Mouse
Host:	Rabbit
Isotype:	IgG
Clonality:	Polyclonal
Immunogen:	Full length fusion protein
Formulation:	PBS pH7.3, 0.05% NaN ₃ , 50% glycerol
Concentration:	lot specific
Purification:	Antigen affinity purification
Conjugation:	Unconjugated
Storage:	Store at -20°C as received.
Stability:	Stable for 12 months from date of receipt.
Predicted Protein Size:	32 kDa
Gene Name:	myozenin 1
Database Link:	NP_067068 Entrez Gene 59011 Mouse Entrez Gene 58529 Human Q9NP98
Background:	The protein encoded by this gene is primarily expressed in the skeletal muscle; and belongs to the myozenin family. Members of this family function as calcineurin-interacting proteins that help tether calcineurin to the sarcomere of cardiac and skeletal muscle. They play an important role in modulation of calcineurin signaling.
Synonyms:	CS-2; FATZ; MYOZ

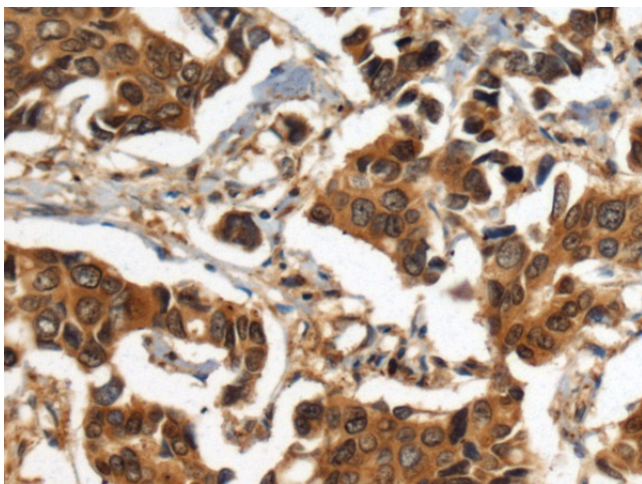


[View online »](#)

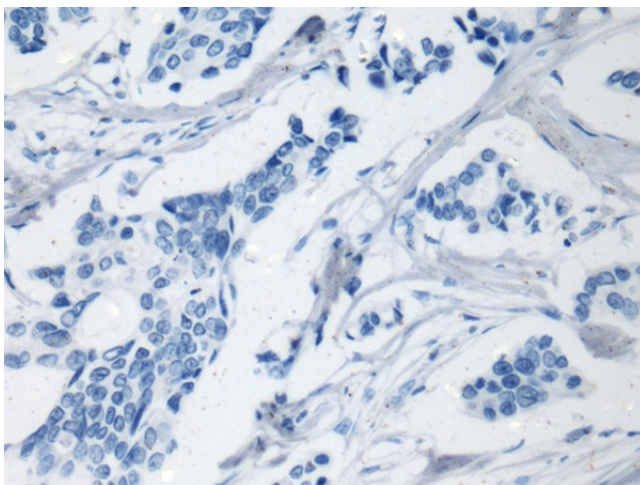
Product images:



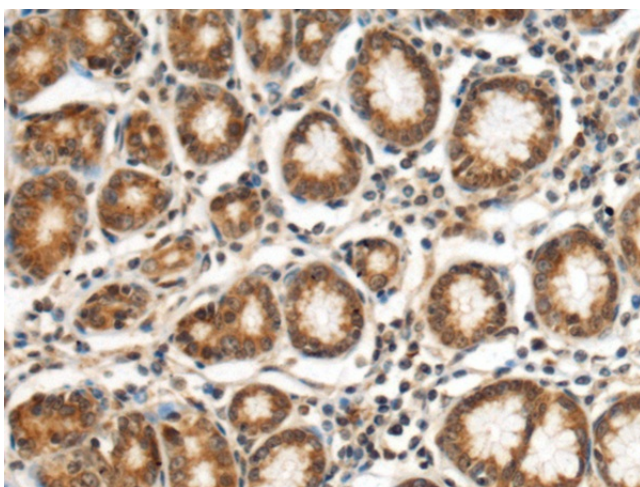
Gel: 8%SDS-PAGE
Lysate: 40 μ g
Lane: Mouse skeletal muscle tissue lysate
Primary antibody: TA322227 (MYOZ1 Antibody) at dilution 1/1000
Secondary antibody: Goat anti rabbit IgG at 1/5000 dilution
Exposure time: 15 seconds



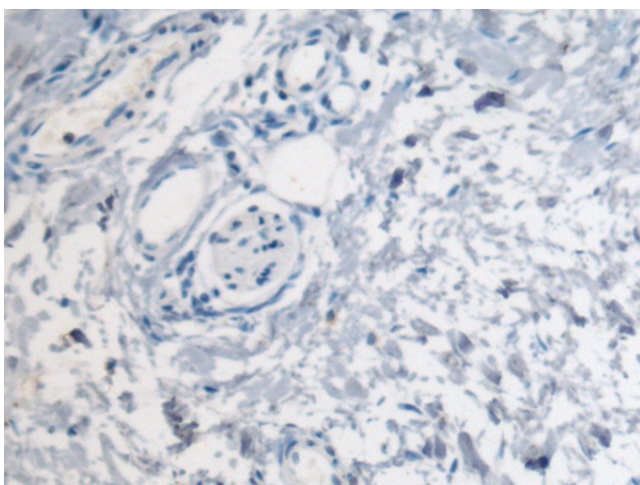
Immunohistochemistry of paraffin-embedded Human breast cancer tissue using TA322227 (MYOZ1 Antibody) at dilution 1/140 (Original magnification: \times 200)



Immunohistochemistry of paraffin-embedded Human breast cancer tissue using TA322227 (MYOZ1 Antibody) at dilution 1/140, treated with fusion protein. (Original magnification: ×200)



Immunohistochemistry of paraffin-embedded Human gastric cancer tissue using TA322227 (MYOZ1 Antibody) at dilution 1/140 (Original magnification: ×200)



Immunohistochemistry of paraffin-embedded Human gastric cancer tissue using TA322227 (MYOZ1 Antibody) at dilution 1/140, treated with fusion protein. (Original magnification: ×200)