

## Product datasheet for **TA322222**

### ACE2 Rabbit Polyclonal Antibody (Angiotensin Converting Enzyme 2)

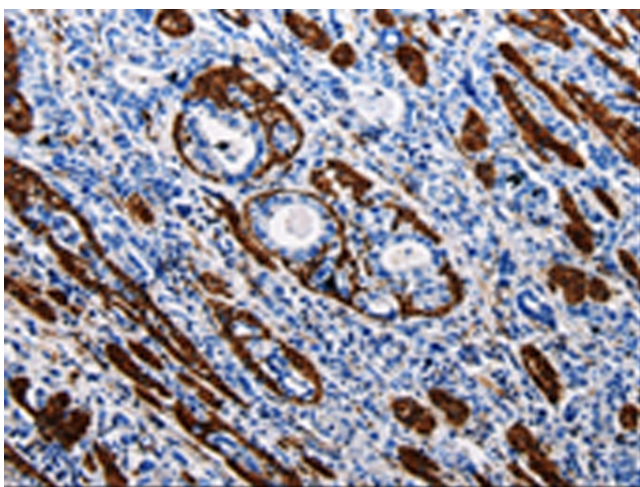
#### Product data:

Product Type:	Primary Antibodies
Applications:	IHC
Recommended Dilution:	IHC: 25-100 Positive control: Human stomach cancer Predicted cell location: Cytoplasm, Cell membrane
Reactivity:	Human, Mouse, Rat
Host:	Rabbit
Isotype:	IgG
Clonality:	Polyclonal
Immunogen:	Synthetic peptide corresponding to a region derived from 185-199 amino acids of Human Angiotensin-converting enzyme 2
Formulation:	PBS pH7.3, 0.05% NaN <sub>3</sub> , 50% glycerol
Concentration:	lot specific
Purification:	Antigen affinity purification
Conjugation:	Unconjugated
Storage:	Store at -20°C as received.
Stability:	Stable for 12 months from date of receipt.
Gene Name:	angiotensin I converting enzyme 2
Database Link:	<a href="#">NP_068576</a> <a href="#">Entrez Gene 70008 MouseEntrez Gene 302668 RatEntrez Gene 59272 Human Q9BYF1</a>

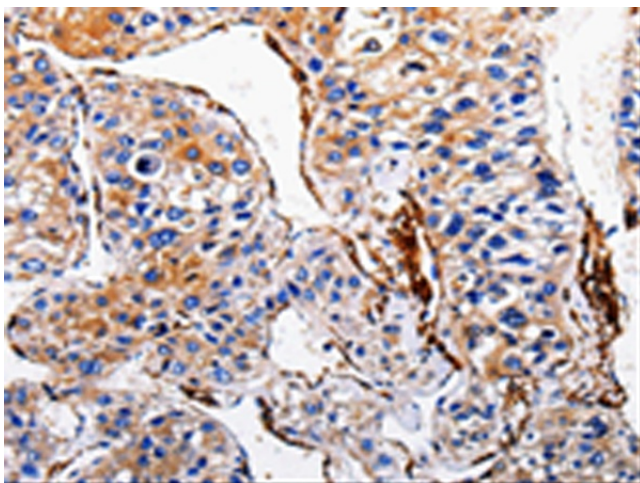


[View online »](#)

- Background:** The protein encoded by this gene belongs to the angiotensin-converting enzyme family of dipeptidyl carboxydipeptidases and has considerable homology to human angiotensin 1 converting enzyme. This secreted protein catalyzes the cleavage of angiotensin I into angiotensin 1-9; and angiotensin II into the vasodilator angiotensin 1-7. The organ- and cell-specific expression of this gene suggests that it may play a role in the regulation of cardiovascular and renal function; as well as fertility. In addition; the encoded protein is a functional receptor for the spike glycoprotein of the human coronaviruses SARS and HCoV-NL63.
- Synonyms:** ACEH
- Protein Families:** Druggable Genome, Secreted Protein, Transmembrane
- Protein Pathways:** Renin-angiotensin system

**Product images:**

Immunohistochemistry of paraffin-embedded Human stomach cancer tissue using TA322222 (ACE2 Antibody) at dilution 1/40. (Original magnification: x200)



Immunohistochemistry of paraffin-embedded Human liver cancer tissue using TA322222 (ACE2 Antibody) at dilution 1/40. (Original magnification: x200)