

Product datasheet for **TA322221S**

ACE2 Rabbit Polyclonal Antibody (Angiotensin Converting Enzyme 2)

Product data:

Product Type:	Primary Antibodies
Applications:	IHC
Recommended Dilution:	IHC: 100-200 Positive control: Human tonsil Predicted cell location: Secreted and Cell membrane
Reactivity:	Human, Mouse, Rat
Host:	Rabbit
Isotype:	IgG
Clonality:	Polyclonal
Immunogen:	Synthetic peptide corresponding to a region derived from 185-199 amino acids of Human Angiotensin-converting enzyme 2
Formulation:	PBS pH7.3, 0.05% NaN ₃ , 50% glycerol
Purification:	Antigen affinity purification
Conjugation:	Unconjugated
Storage:	Store at -20°C as received.
Stability:	Stable for 12 months from date of receipt.
Gene Name:	angiotensin I converting enzyme 2
Database Link:	NP_068576 Entrez Gene 70008 Mouse Entrez Gene 302668 Rat Entrez Gene 59272 Human Q9BYF1
Background:	The protein encoded by this gene belongs to the angiotensin-converting enzyme family of dipeptidyl carboxydipeptidases and has considerable homology to human angiotensin 1 converting enzyme. This secreted protein catalyzes the cleavage of angiotensin I into angiotensin 1-9; and angiotensin II into the vasodilator angiotensin 1-7. The organ- and cell-specific expression of this gene suggests that it may play a role in the regulation of cardiovascular and renal function; as well as fertility. In addition; the encoded protein is a functional receptor for the spike glycoprotein of the human coronaviruses SARS and HCoV-NL63.



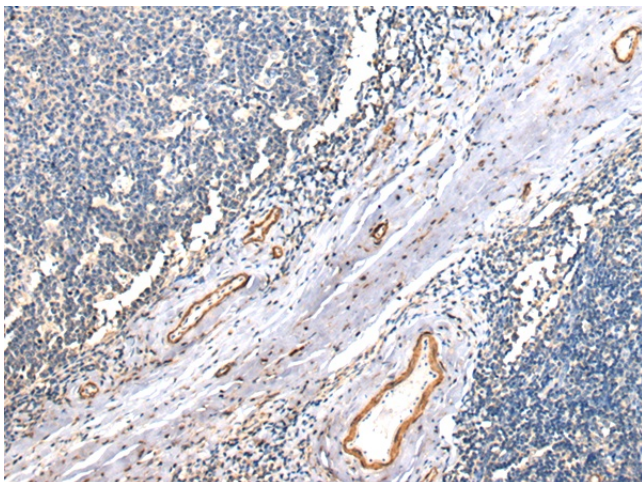
[View online »](#)

Synonyms: ACEH

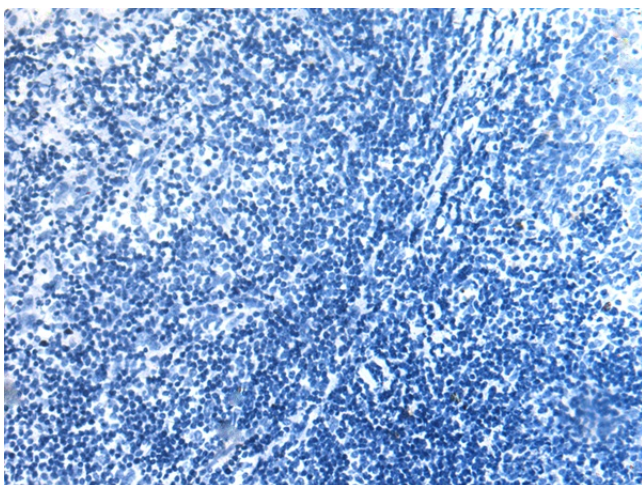
Protein Families: Druggable Genome, Secreted Protein, Transmembrane

Protein Pathways: Renin-angiotensin system

Product images:



Immunohistochemistry of paraffin-embedded Human tonsil tissue using [TA322221] (ACE2 Antibody) at dilution 1/200 (Original magnification: $\times 200$)



Immunohistochemistry of paraffin-embedded Human tonsil tissue using [TA322221] (ACE2 Antibody) at dilution 1/200, treated with synthetic peptide. (Original magnification: $\times 200$)