

## Product datasheet for **TA322220**

### ACE2 Rabbit Polyclonal Antibody (Angiotensin Converting Enzyme 2)

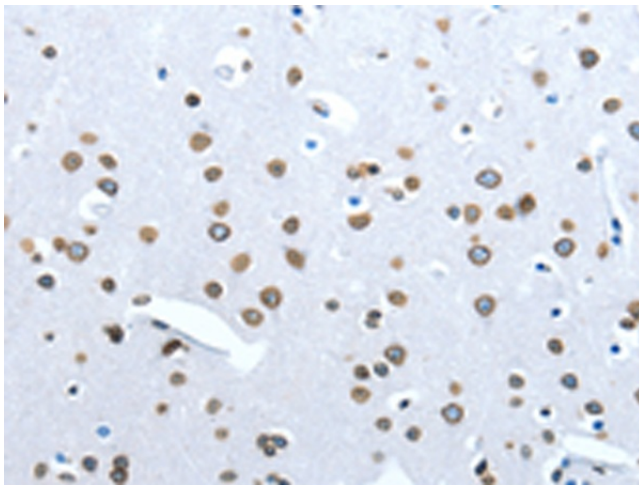
#### Product data:

Product Type:	Primary Antibodies
Applications:	IHC
Recommended Dilution:	IHC: 25-100 Positive control: Human brain Predicted cell location: Cytoplasm
Reactivity:	Human
Host:	Rabbit
Isotype:	IgG
Clonality:	Polyclonal
Immunogen:	Fusion protein corresponding to a region derived from 556-740 amino acids of human angiotensin I converting enzyme (peptidyl-dipeptidase A) 2
Formulation:	PBS pH7.3, 0.05% NaN <sub>3</sub> , 50% glycerol
Concentration:	lot specific
Purification:	Antigen affinity purification
Conjugation:	Unconjugated
Storage:	Store at -20°C as received.
Stability:	Stable for 12 months from date of receipt.
Gene Name:	angiotensin I converting enzyme 2
Database Link:	<a href="#">NP_068576</a> <a href="#">Entrez Gene 59272 Human</a> <a href="#">Q9BYF1</a>

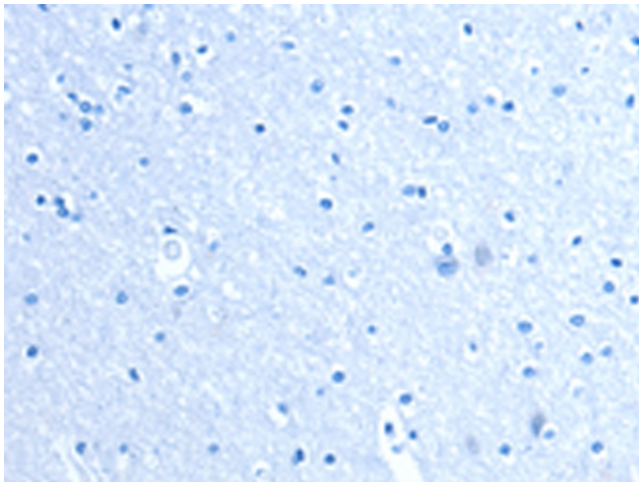


[View online »](#)

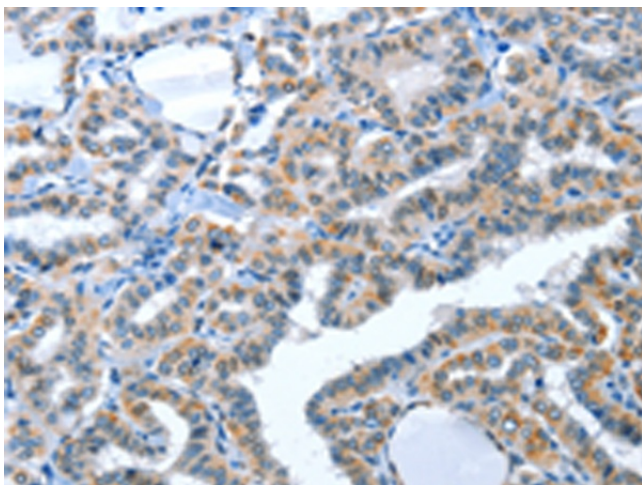
<b>Background:</b>	The protein encoded by this gene belongs to the angiotensin-converting enzyme family of dipeptidyl carboxydipeptidases and has considerable homology to human angiotensin 1 converting enzyme. This secreted protein catalyzes the cleavage of angiotensin I into angiotensin 1-9, and angiotensin II into the vasodilator angiotensin 1-7. The organ- and cell-specific expression of this gene suggests that it may play a role in the regulation of cardiovascular and renal function, as well as fertility. In addition, the encoded protein is a functional receptor for the spike glycoprotein of the human coronaviruses SARS and HCoV-NL63
<b>Synonyms:</b>	ACEH
<b>Protein Families:</b>	Druggable Genome, Secreted Protein, Transmembrane
<b>Protein Pathways:</b>	Renin-angiotensin system

**Product images:**

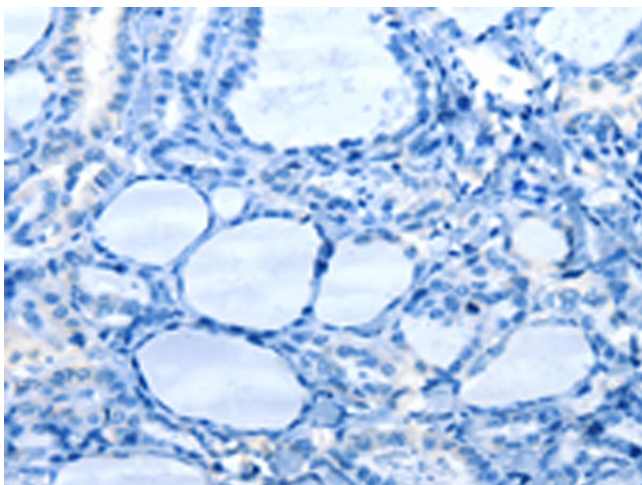
Immunohistochemistry of paraffin-embedded Human brain tissue using TA322220 (ACE2 Antibody) at dilution 1/30 (Original magnification: ×200)



Immunohistochemistry of paraffin-embedded Human brain tissue using TA322220 (ACE2 Antibody) at dilution 1/30, treated with fusion protein. (Original magnification: ×200)



Immunohistochemistry of paraffin-embedded Human thyroid cancer tissue using TA322220 (ACE2 Antibody) at dilution 1/30 (Original magnification:  $\times 200$ )



Immunohistochemistry of paraffin-embedded Human thyroid cancer tissue using TA322220 (ACE2 Antibody) at dilution 1/30, treated with fusion protein. (Original magnification:  $\times 200$ )