

## Product datasheet for **TA322219**

### MMP26 Rabbit Polyclonal Antibody

#### Product data:

Product Type:	Primary Antibodies
Applications:	IHC, WB
Recommended Dilution:	WB: 200-1000 WB positive control: Human placenta tissue lysate IHC: 30-150 Positive control: Human tonsil Predicted cell location: Secreted
Reactivity:	Human
Host:	Rabbit
Isotype:	IgG
Clonality:	Polyclonal
Immunogen:	Synthetic peptide corresponding to a region derived from 243-261 amino acids of Human matrix metalloproteinase 26
Formulation:	PBS pH7.3, 0.05% NaN <sub>3</sub> , 50% glycerol
Concentration:	lot specific
Purification:	Antigen affinity purification
Conjugation:	Unconjugated
Storage:	Store at -20°C as received.
Stability:	Stable for 12 months from date of receipt.
Predicted Protein Size:	30 kDa
Gene Name:	matrix metalloproteinase 26
Database Link:	<a href="#">NP_068573</a> <a href="#">Entrez Gene 56547 Human</a> <a href="#">Q9NRE1</a>



[View online »](#)

**Background:**

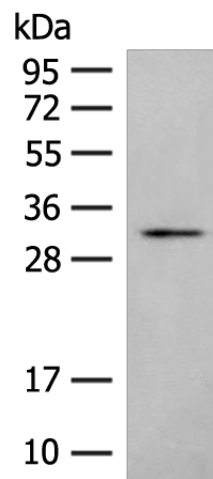
Proteins of the matrix metalloproteinase (MMP) family are involved in the breakdown of extracellular matrix in normal physiological processes; such as embryonic development; reproduction; and tissue remodeling; as well as in disease processes; such as arthritis and metastasis. Most MMP's are secreted as inactive proproteins which are activated when cleaved by extracellular proteinases. The encoded protein degrades type IV collagen; fibronectin; fibrinogen; casein; vitronectin; alpha 1-antitrypsin; alpha 2-macroglobulin; and insulin-like growth factor-binding protein 1; and activates MMP9 by cleavage. The protein differs from most MMP family members in that it lacks a conserved C-terminal protein domain.

**Synonyms:**

MGC126590; MGC126592

**Protein Families:**

Druggable Genome, Secreted Protein

**Product images:**

Gel: 12%SDS-PAGE

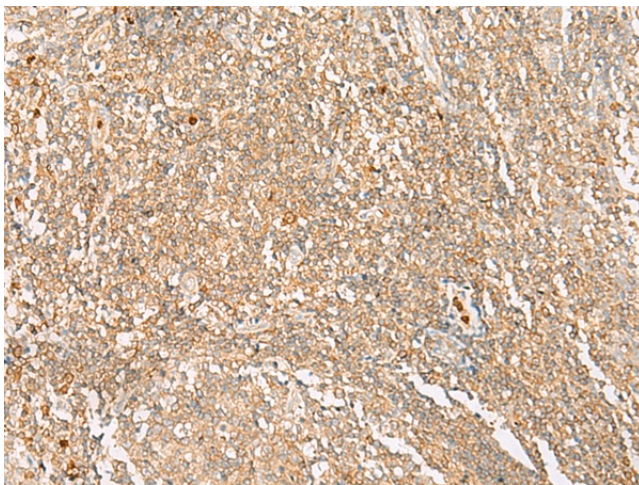
Lysate: 40 µg

Lane: Human placenta tissue lysate

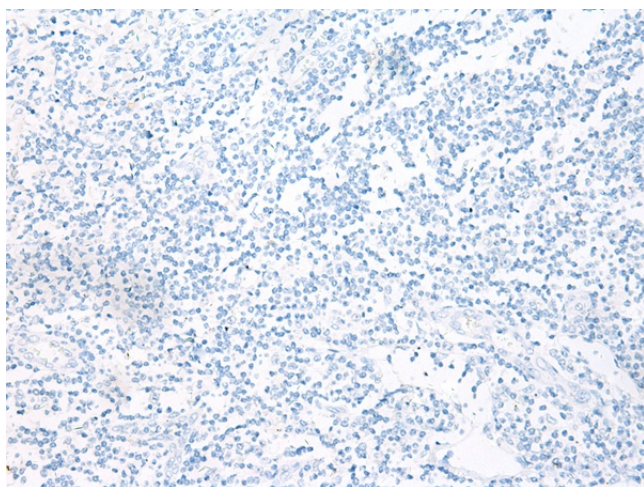
Primary antibody: TA322219 (MMP26 Antibody)  
at dilution 1/300

Secondary antibody: Goat anti rabbit IgG at  
1/8000 dilution

Exposure time: 1 minute



Immunohistochemistry of paraffin-embedded  
Human tonsil tissue using TA322219 (MMP26  
Antibody) at dilution 1/30 (Original magnification:  
×200)



Immunohistochemistry of paraffin-embedded Human tonsil tissue using TA322219 (MMP26 Antibody) at dilution 1/30, treated with synthetic peptide. (Original magnification: ×200)