

Product datasheet for **TA322216S**

Secretin (SCT) Rabbit Polyclonal Antibody

Product data:

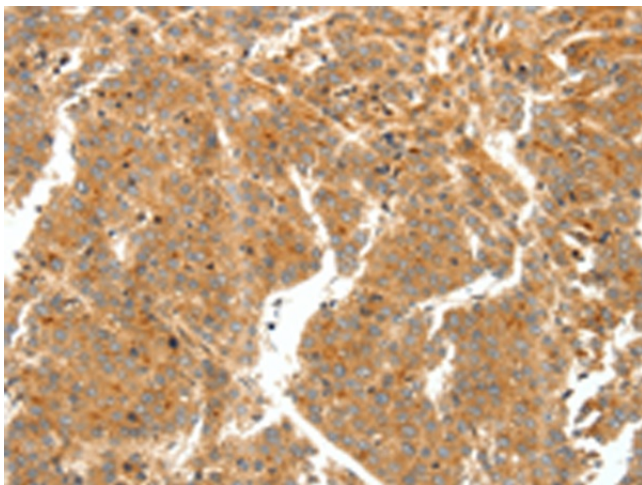
| | |
|-----------------------|---|
| Product Type: | Primary Antibodies |
| Applications: | IHC |
| Recommended Dilution: | IHC: 50-200 Positive control: Human liver cancer Predicted cell location: Cytoplasm |
| Reactivity: | Human, Mouse, Rat |
| Host: | Rabbit |
| Isotype: | IgG |
| Clonality: | Polyclonal |
| Immunogen: | Synthetic peptide corresponding to a region derived from 34-49 amino acids of human secretin |
| Formulation: | PBS pH7.3, 0.05% NaN ₃ , 50% glycerol |
| Purification: | Antigen affinity purification |
| Conjugation: | Unconjugated |
| Storage: | Store at -20°C as received. |
| Stability: | Stable for 12 months from date of receipt. |
| Gene Name: | secretin |
| Database Link: | NP_068739 Entrez Gene 20287 Mouse Entrez Gene 24769 Rat Entrez Gene 6343 Human P09683 |
| Background: | Secretin belongs to the glucagon family. This protein is an endocrine hormone and its major site of production is the endocrine S cells located in the proximal small intestinal mucosa. The release of active secretin is stimulated by either fatty acids or an acidic pH in the duodenum. This hormone stimulates the secretion of bicarbonate-rich pancreatic fluids and has also been shown to regulate the growth and development of the stomach; small intestine; and pancreas. Secretin deficiency has been implicated in autistic syndrome; suggesting that the hormone could have a neuroendocrine function in addition to its role in digestion. |
| Synonyms: | secretin |



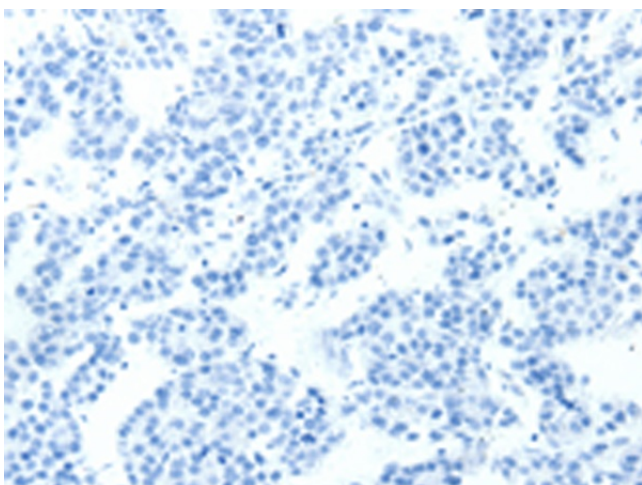
[View online »](#)

Protein Families: Druggable Genome, Secreted Protein

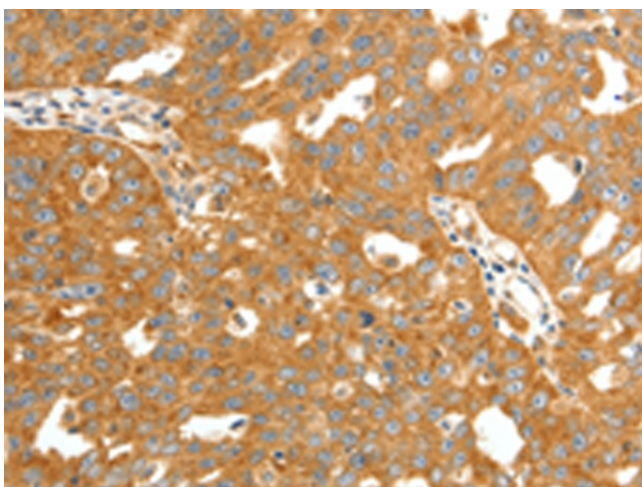
Product images:



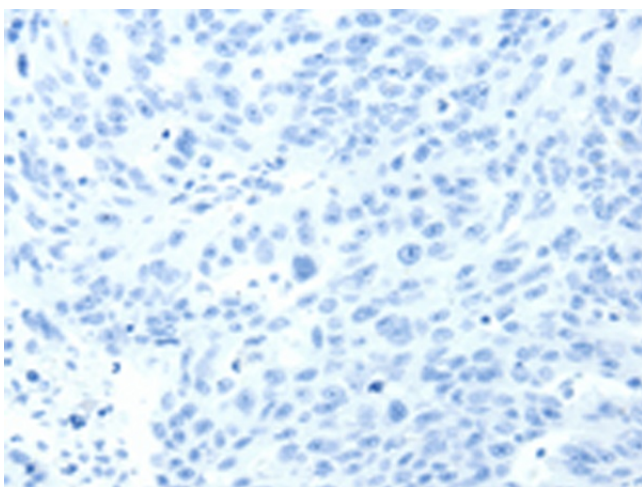
Immunohistochemistry of paraffin-embedded Human liver cancer tissue using [TA322216] (SCT Antibody) at dilution 1/60 (Original magnification: ×200)



Immunohistochemistry of paraffin-embedded Human liver cancer tissue using [TA322216] (SCT Antibody) at dilution 1/60, treated with synthetic peptide. (Original magnification: ×200)



Immunohistochemistry of paraffin-embedded Human ovarian cancer tissue using [TA322216] (SCT Antibody) at dilution 1/60 (Original magnification: $\times 200$)



Immunohistochemistry of paraffin-embedded Human ovarian cancer tissue using [TA322216] (SCT Antibody) at dilution 1/60, treated with synthetic peptide. (Original magnification: $\times 200$)