

Product datasheet for **TA322215**

Secretin (SCT) Rabbit Polyclonal Antibody

Product data:

Product Type:	Primary Antibodies
Applications:	IHC
Recommended Dilution:	IHC: 50-200 Positive control: Human thyroid cancer Predicted cell location: Cytoplasm
Reactivity:	Human, Mouse, Rat
Host:	Rabbit
Isotype:	IgG
Clonality:	Polyclonal
Immunogen:	Synthetic peptide corresponding to a region derived from 34-49 amino acids of human secretin
Formulation:	PBS pH7.3, 0.05% NaN ₃ , 50% glycerol
Concentration:	lot specific
Purification:	Antigen affinity purification
Conjugation:	Unconjugated
Storage:	Store at -20°C as received.
Stability:	Stable for 12 months from date of receipt.
Gene Name:	secretin
Database Link:	NP_068739 Entrez Gene 20287 Mouse Entrez Gene 24769 Rat Entrez Gene 6343 Human P09683
Background:	Secretin belongs to the glucagon family. This protein is an endocrine hormone and its major site of production is the endocrine S cells located in the proximal small intestinal mucosa. The release of active secretin is stimulated by either fatty acids or an acidic pH in the duodenum. This hormone stimulates the secretion of bicarbonate-rich pancreatic fluids and has also been shown to regulate the growth and development of the stomach; small intestine; and pancreas. Secretin deficiency has been implicated in autistic syndrome; suggesting that the hormone could have a neuroendocrine function in addition to its role in digestion.

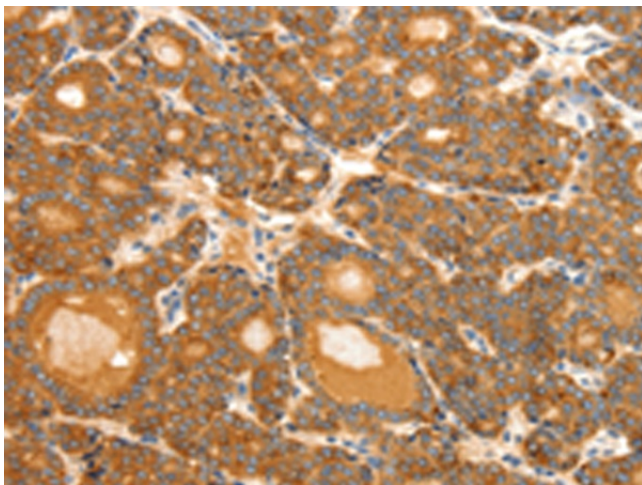


[View online »](#)

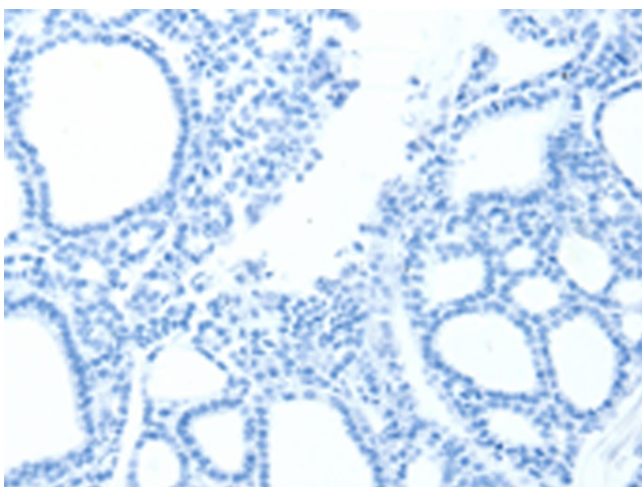
Synonyms: secretin

Protein Families: Druggable Genome, Secreted Protein

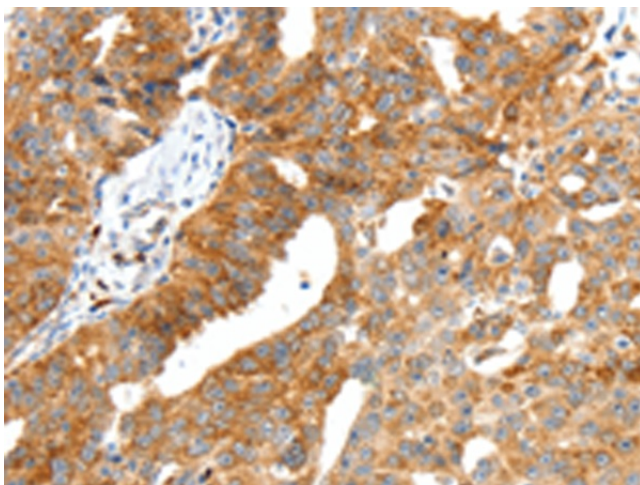
Product images:



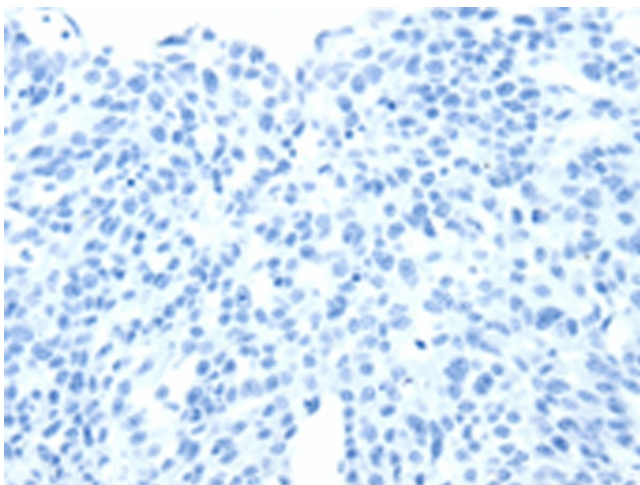
Immunohistochemistry of paraffin-embedded Human thyroid cancer tissue using TA322215 (SCT Antibody) at dilution 1/40 (Original magnification: ×200)



Immunohistochemistry of paraffin-embedded Human thyroid cancer tissue using TA322215 (SCT Antibody) at dilution 1/40, treated with synthetic peptide. (Original magnification: ×200)



Immunohistochemistry of paraffin-embedded Human ovarian cancer tissue using TA322215 (SCT Antibody) at dilution 1/40 (Original magnification: $\times 200$)



Immunohistochemistry of paraffin-embedded Human ovarian cancer tissue using TA322215 (SCT Antibody) at dilution 1/40, treated with synthetic peptide. (Original magnification: $\times 200$)