

Product datasheet for **TA322213S**

SLC22A3 Rabbit Polyclonal Antibody

Product data:

Product Type:	Primary Antibodies
Applications:	IHC, WB
Recommended Dilution:	WB: 500-2000 WB positive control: Mouse liver tissue IHC: 25-100 Positive control: Human liver cancer Predicted cell location: Cytoplasm, Cell membrane
Reactivity:	Human, Mouse, Rat
Host:	Rabbit
Isotype:	IgG
Clonality:	Polyclonal
Immunogen:	Synthetic peptide corresponding to a region derived from 336-350 amino acids of human solute carrier family 22 (extraneuronal monoamine transporter), member 3
Formulation:	PBS pH7.3, 0.05% NaN ₃ , 50% glycerol
Purification:	Antigen affinity purification
Conjugation:	Unconjugated
Storage:	Store at -20°C as received.
Stability:	Stable for 12 months from date of receipt.
Predicted Protein Size:	61 kDa
Gene Name:	solute carrier family 22 member 3
Database Link:	NP_068812 Entrez Gene 20519 Mouse Entrez Gene 29504 Rat Entrez Gene 6581 Human O75751
Background:	Polyspecific organic cation transporters in the liver; kidney; intestine; and other organs are critical for elimination of many endogenous small organic cations as well as a wide array of drugs and environmental toxins. This gene is one of three similar cation transporter genes located in a cluster on chromosome 6. The encoded protein contains twelve putative transmembrane domains and is a plasma integral membrane protein.?

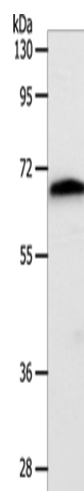


[View online »](#)

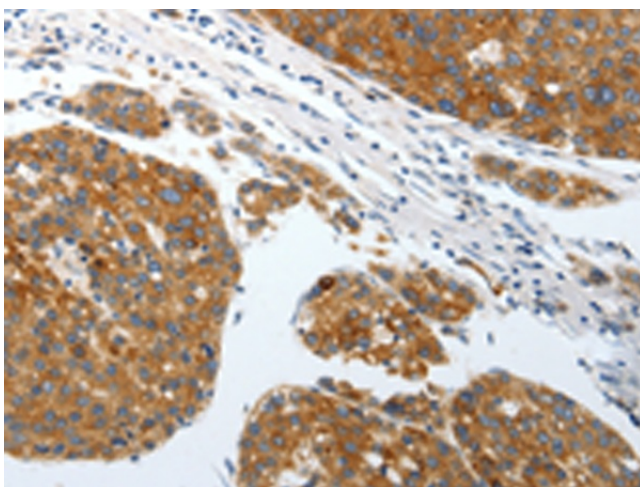
Synonyms: EMT; EMTH; OCT3

Protein Families: Transmembrane

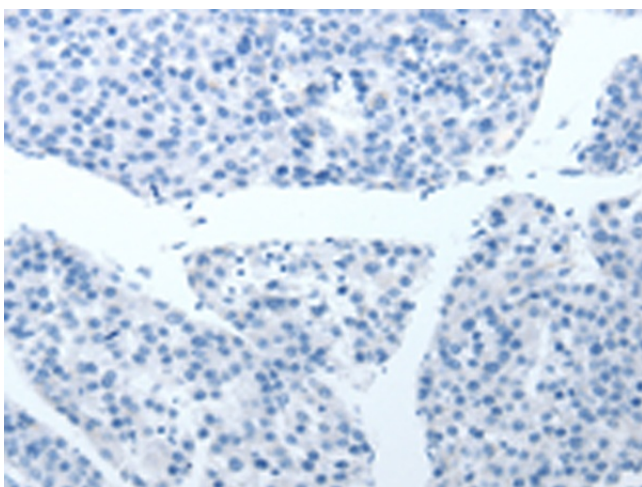
Product images:



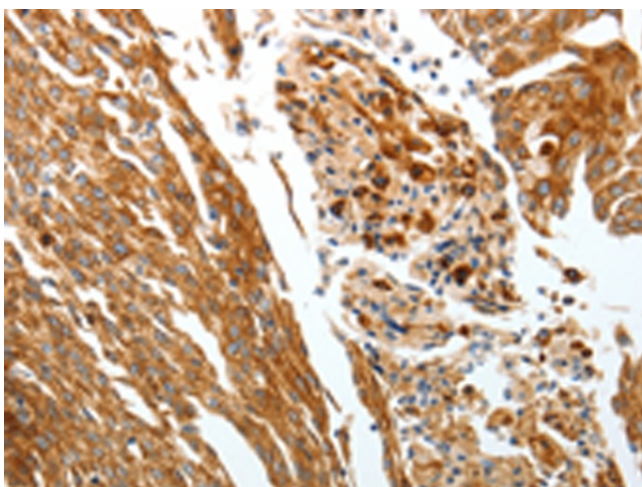
Gel: 10%SDS-PAGE
Lysate: 40 µg
Lane: Mouse liver tissue
Primary antibody: [TA322213] (SLC22A3 Antibody) at dilution 1/400
Secondary antibody: Goat anti rabbit IgG at 1/8000 dilution
Exposure time: 1 minute



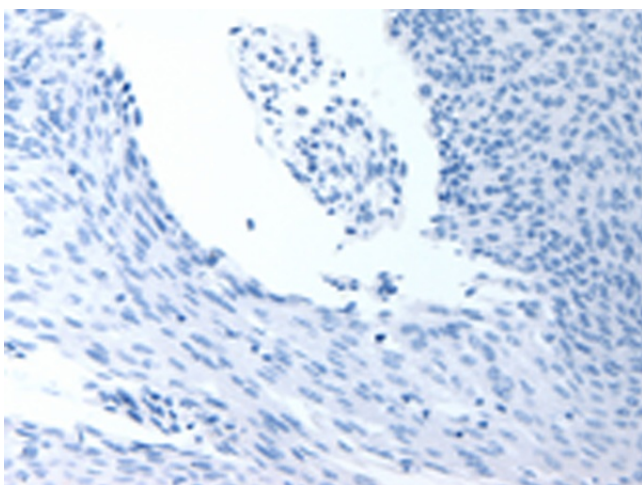
Immunohistochemistry of paraffin-embedded Human liver cancer tissue using [TA322213] (SLC22A3 Antibody) at dilution 1/25 (Original magnification: ×200)



Immunohistochemistry of paraffin-embedded Human liver cancer tissue using [TA322213] (SLC22A3 Antibody) at dilution 1/25, treated with synthetic peptide. (Original magnification: $\times 200$)



Immunohistochemistry of paraffin-embedded Human cervical cancer tissue using [TA322213] (SLC22A3 Antibody) at dilution 1/25 (Original magnification: $\times 200$)



Immunohistochemistry of paraffin-embedded Human cervical cancer tissue using [TA322213] (SLC22A3 Antibody) at dilution 1/25, treated with synthetic peptide. (Original magnification: $\times 200$)