

Product datasheet for **TA322212**

Ceramide synthase 2 (CERS2) Rabbit Polyclonal Antibody

Product data:

Product Type:	Primary Antibodies
Applications:	IHC, WB
Recommended Dilution:	WB: 200-1000 WB positive control: Mouse skin tissue lysate IHC: 50-200 Positive control: Human liver cancer Predicted cell location: Cytoplasm
Reactivity:	Human, Mouse
Host:	Rabbit
Isotype:	IgG
Clonality:	Polyclonal
Immunogen:	Synthetic peptide corresponding to a region derived from 100-114 amino acids of human ceramide synthase 2
Formulation:	PBS pH7.3, 0.05% NaN ₃ , 50% glycerol
Concentration:	lot specific
Purification:	Antigen affinity purification
Conjugation:	Unconjugated
Storage:	Store at -20°C as received.
Stability:	Stable for 12 months from date of receipt.
Predicted Protein Size:	45 kDa
Gene Name:	ceramide synthase 2
Database Link:	NP_071358 Entrez Gene 76893 Mouse Entrez Gene 29956 Human Q96G23



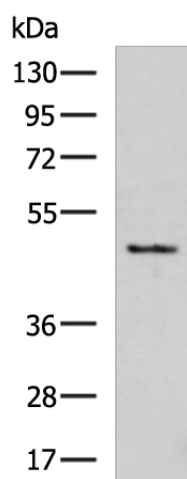
[View online »](#)

Background: This gene encodes a protein that has sequence similarity to yeast longevity assurance gene 1. Mutation or overexpression of the related gene in yeast has been shown to alter yeast lifespan. The human protein may play a role in the regulation of cell growth. Alternatively spliced transcript variants encoding the same protein have been described. Suppresses the growth of cancer cells. May be involved in sphingolipid synthesis. Expressed in kidney; liver; brain; heart; placenta and lung.

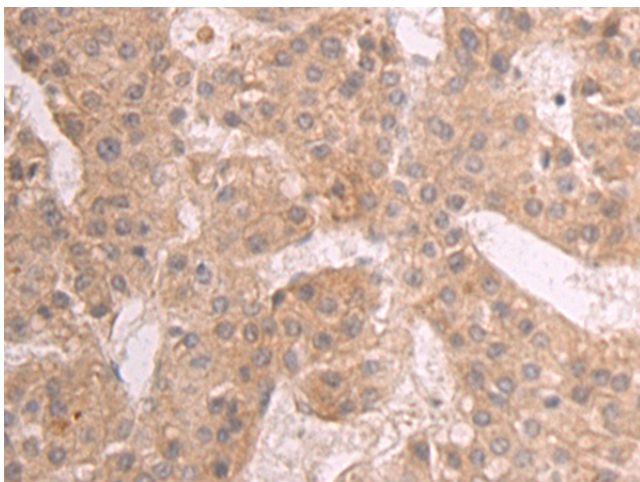
Synonyms: L3; LASS2; SP260; TMSG1

Protein Families: Transcription Factors, Transmembrane

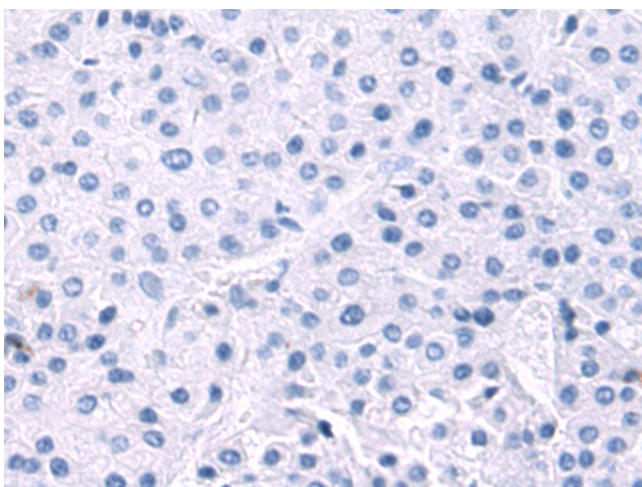
Product images:



Gel: 8%SDS-PAGE
Lysate: 40 μ g
Lane: Mouse skin tissue lysate
Primary antibody: TA322212 (CERS2 Antibody) at dilution 1/400
Secondary antibody: Goat anti rabbit IgG at 1/5000 dilution
Exposure time: 90 seconds



Immunohistochemistry of paraffin-embedded Human liver cancer tissue using TA322212 (CERS2 Antibody) at dilution 1/50 (Original magnification: \times 200)



Immunohistochemistry of paraffin-embedded Human liver cancer tissue using TA322212 (CERS2 Antibody) at dilution 1/50, treated with synthetic peptide. (Original magnification: ×200)