

Product datasheet for **TA322211**

Ceramide synthase 2 (CERS2) Rabbit Polyclonal Antibody

Product data:

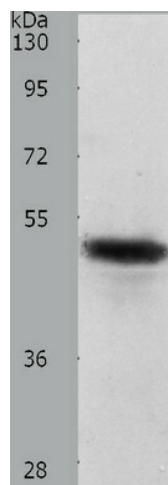
Product Type:	Primary Antibodies
Applications:	WB
Recommended Dilution:	ELISA: 1:2000-5000, WB: 1:500-2000
Reactivity:	Human, Mouse, Rat
Host:	Rabbit
Isotype:	IgG
Clonality:	Polyclonal
Immunogen:	Synthetic peptide corresponding to a region derived from 100-114 amino acids of human ceramide synthase 2
Formulation:	PBS pH7.3, 0.05% NaN ₃ , 50% glycerol
Concentration:	lot specific
Purification:	Antigen affinity purification
Conjugation:	Unconjugated
Storage:	Store at -20°C as received.
Stability:	Stable for 12 months from date of receipt.
Predicted Protein Size:	45 kDa
Gene Name:	ceramide synthase 2
Database Link:	NP_071358 Entrez Gene 76893 Mouse Entrez Gene 310667 Rat Entrez Gene 29956 Human Q96G23
Background:	This gene encodes a protein that has sequence similarity to yeast longevity assurance gene 1. Mutation or overexpression of the related gene in yeast has been shown to alter yeast lifespan. The human protein may play a role in the regulation of cell growth. Alternatively spliced transcript variants encoding the same protein have been described. Suppresses the growth of cancer cells. May be involved in sphingolipid synthesis. Expressed in kidney; liver; brain; heart; placenta and lung.
Synonyms:	L3; LASS2; SP260; TMSG1



[View online »](#)

Protein Families: Transcription Factors, Transmembrane

Product images:



Predicted band size: 45 kDa. Positive control: Human liver cancer tissue lysate. Recommended dilution: 1/500-2000. (Gel: 10%SDS-PAGE Lysate: 40 ug per lane Primary antibody: 1/750 dilution Secondary antibody: Goat anti Rabbit IgG - H&L (HRP) at 1/10000 dilution Exposure time: 40 seconds)