

## Product datasheet for **TA322205**

### Persephin receptor (GFRA4) Rabbit Polyclonal Antibody

#### Product data:

Product Type:	Primary Antibodies
Applications:	IHC, WB
Recommended Dilution:	WB: 200-1000 WB positive control: Mouse brain tissue lysate IHC: 30-150 Positive control: Human esophagus cancer Predicted cell location: Cell membrane
Reactivity:	Human, Mouse
Host:	Rabbit
Isotype:	IgG
Clonality:	Polyclonal
Immunogen:	Synthetic peptide corresponding to a region derived from 266-279 amino acids of human GDNF family receptor alpha 4
Formulation:	PBS pH7.3, 0.05% NaN <sub>3</sub> , 50% glycerol
Concentration:	lot specific
Purification:	Antigen affinity purification
Conjugation:	Unconjugated
Storage:	Store at -20°C as received.
Stability:	Stable for 12 months from date of receipt.
Predicted Protein Size:	32 kDa
Gene Name:	GDNF family receptor alpha 4
Database Link:	<a href="#">NP_071422</a> <a href="#">Entrez Gene 14588 Mouse</a> <a href="#">Entrez Gene 64096 Human</a> <a href="#">Q9GZZ7</a>



[View online »](#)

**Background:**

The protein encoded by this gene is a member of the GDNF receptor family. It is a glycosylphosphatidylinositol(GPI)-linked cell surface receptor for persephin; and mediates activation of the RET tyrosine kinase receptor. This gene is a candidate gene for RET-associated diseases. Alternatively spliced transcript variants encoding different isoforms have been described for this gene.

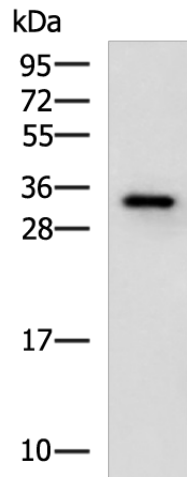
**Synonyms:**

GDNF family receptor alpha 4; GFR receptor alpha 4; OTTHUMP00000030106; OTTHUMP00000030107; persephin receptor

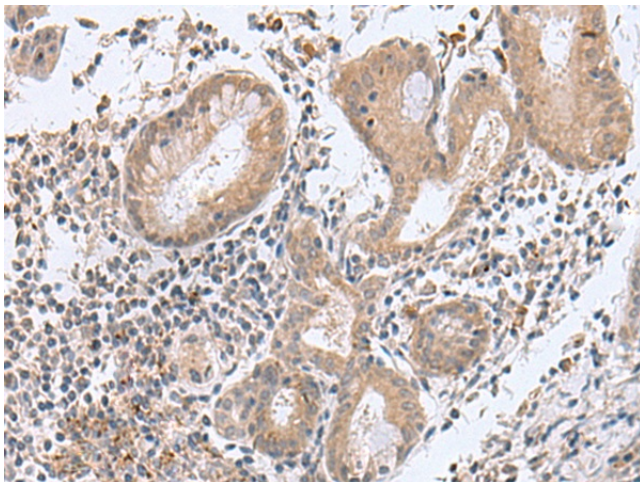
**Protein Families:**

Druggable Genome

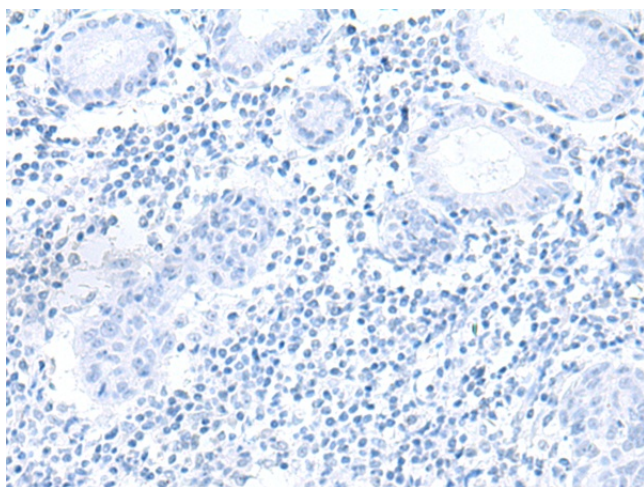
**Product images:**



Gel: 12%SDS-PAGE  
 Lysate: 40 µg  
 Lane: Mouse brain tissue lysate  
 Primary antibody: TA322205 (GFRA4 Antibody) at dilution 1/250  
 Secondary antibody: Goat anti rabbit IgG at 1/5000 dilution  
 Exposure time: 2 minutes



Immunohistochemistry of paraffin-embedded Human esophagus cancer tissue using TA322205 (GFRA4 Antibody) at dilution 1/40 (Original magnification: ×200)



Immunohistochemistry of paraffin-embedded Human esophagus cancer tissue using TA322205 (GFRA4 Antibody) at dilution 1/40, treated with synthetic peptide. (Original magnification: ×200)