

Product datasheet for **TA322204**

Persephin receptor (GFRA4) Rabbit Polyclonal Antibody

Product data:

Product Type:	Primary Antibodies
Applications:	IHC, WB
Recommended Dilution:	WB: 500-2000 WB positive control: 231 cell lysate IHC: 50-100 Positive control: Human liver cancer Predicted cell location: Secreted
Reactivity:	Human
Host:	Rabbit
Isotype:	IgG
Clonality:	Polyclonal
Immunogen:	Synthetic peptide corresponding to a region derived from 266-279 amino acids of human GDNF family receptor alpha 4
Formulation:	PBS pH7.3, 0.05% NaN ₃ , 50% glycerol
Concentration:	lot specific
Purification:	Antigen affinity purification
Conjugation:	Unconjugated
Storage:	Store at -20°C as received.
Stability:	Stable for 12 months from date of receipt.
Gene Name:	GDNF family receptor alpha 4
Database Link:	NP_071422 Entrez Gene 64096 Human Q9GZZ7
Background:	The protein encoded by this gene is a member of the GDNF receptor family. It is a glycosylphosphatidylinositol(GPI)-linked cell surface receptor for persephin; and mediates activation of the RET tyrosine kinase receptor. This gene is a candidate gene for RET-associated diseases. Alternatively spliced transcript variants encoding different isoforms have been described for this gene.

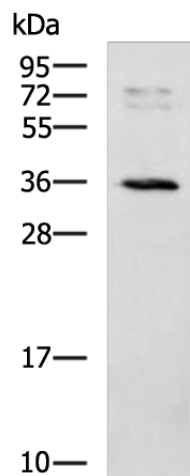


[View online »](#)

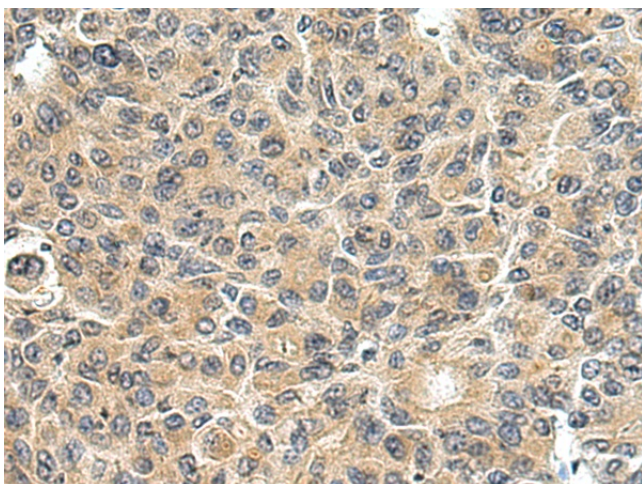
Synonyms: GDNF family receptor alpha 4; GFR receptor alpha 4; OTTHUMP00000030106; OTTHUMP00000030107; persephin receptor

Protein Families: Druggable Genome

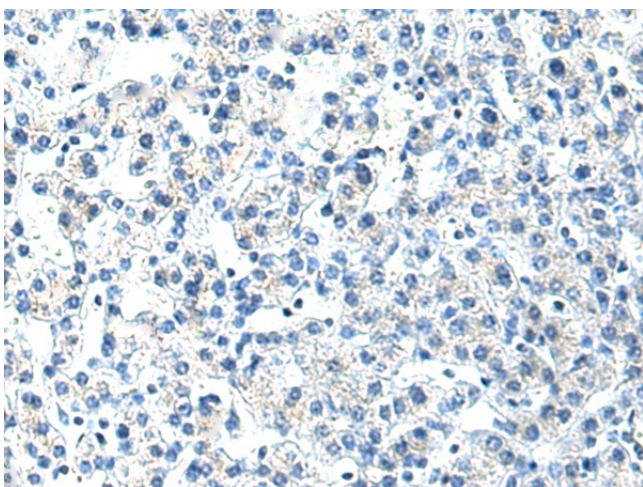
Product images:



Gel: 12%SDS-PAGE
Lysate: 40 µg
Lane: 231 cell lysate
Primary antibody: TA322204 (GFRA4 Antibody) at dilution 1/500
Secondary antibody: Goat anti rabbit IgG at 1/5000 dilution
Exposure time: 10 minutes



Immunohistochemistry of paraffin-embedded Human liver cancer tissue using TA322204 (GFRA4 Antibody) at dilution 1/30 (Original magnification: ×200)



Immunohistochemistry of paraffin-embedded Human liver cancer tissue using TA322204 (GFRA4 Antibody) at dilution 1/30, treated with synthetic peptide. (Original magnification: $\times 200$)