

## Product datasheet for **TA322201**

### **RAB38 Rabbit Polyclonal Antibody**

#### **Product data:**

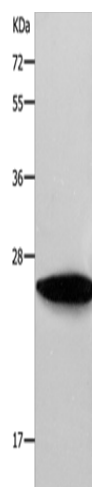
Product Type:	Primary Antibodies
Applications:	WB
Recommended Dilution:	WB: 1000-5000 WB positive control: NIH/3T3 cells
Reactivity:	Human, Mouse
Host:	Rabbit
Isotype:	IgG
Clonality:	Polyclonal
Immunogen:	Synthetic peptide peptide corresponding to a region derived from 100-115 amino acids of human RAB38, member RAS oncogene family
Formulation:	PBS pH7.3, 0.05% NaN <sub>3</sub> , 50% glycerol
Concentration:	lot specific
Purification:	Antigen affinity purification
Conjugation:	Unconjugated
Storage:	Store at -20°C as received.
Stability:	Stable for 12 months from date of receipt.
Predicted Protein Size:	24 kDa
Gene Name:	RAB38, member RAS oncogene family
Database Link:	<a href="#">NP_071732</a> <a href="#">Entrez Gene 72433 Mouse</a> <a href="#">Entrez Gene 23682 Human</a> <a href="#">P57729</a>
Background:	Ras-related protein Rab-38 is a protein that in humans is encoded by the RAB38 gene. On the basis of human genome sequence data; the RAB38 locus on chromosome 11 is flanked proximally by tyrosinase at 11q14-q21 and distally by EED at 11q14.2-q22.3 and MYO7A at 11q13.5. In melanocytic cells RAB38 gene expression may be regulated by MITF. May be involved in melanosomal transport and docking. Involved in the proper sorting of TYRP1.
Synonyms:	NY-MEL-1; rrGTPbp



[View online »](#)

Protein Families: Druggable Genome

### Product images:



Gel: 10%SDS-PAGE  
Lysate: 40  $\mu$ g  
Lane: NIH/3T3 cells  
Primary antibody: TA322201 (RAB38 Antibody) at dilution 1/550  
Secondary antibody: Goat anti rabbit IgG at 1/8000 dilution  
Exposure time: 10 seconds